

TecDoc Data Format

Data Format Version 2.7

Author	TecAlliance GmbH
Version	2.0.24
Date	06.09.2023
Status	Published

Change history

Source version	Target version	Published	Place of change	Short description of change
Based on TecDoc Format version 4 – document version 1.3.5 as of June 2020				
1.3.5	2.0	June 2020	New chapter New table 031 New table 053 New table 213 Grouping of tables in Information Domains	Version 2.5 Changes in Format version 2.5 Language Description for Article Criteria (Logistics) Criteria Table Logistics Article Criteria (Logistics)
2.0	2.0.1	July 2020	Table 115 Table 001 Table 053 General Information	Error correction in „Pos“-column Error correction (BrandNo Reference) Error correction (wrong table references) Some additional information on Primary Keys
2.0.1	2.0.2	August 2020	General General Information Table 042 (Logo) Table 554 Table 410 Table 213 Table 053	This documentation is the only official one since August 2020 as 2.4 version is a subset of the 2.5 version. More detailed information on Unicode characters Maximum permitted size added Error Correction in ManID (Type is 'C') Error correction: Add SortNo to Primary Key Error correction (criteria reference to table 053) Error correction in field names
2.0.2	2.0.3	September 2020	Table 053	Error corrections in references to table 030/031



Source version	Target version	Published	Place of change	Short description of change
			"Vehicle Classes" udo Table 043	Change in field names was not performed in version 2.0.2 -> corrected in 2.0.3 Error correction for key table of <i>AdrType</i> field
2.0.3	2.0.4	October 2020	Table 204 Table 231	Error correction in comment for field <i>SupersNo</i> Annotation on the use of watermarks
2.0.4	2.0.5	November 2020	Table 053	Change in comment of field <i>Multiple</i>
2.0.5	2.0.6	January 2021	Table 332 Table 333 Tables 328/329 Table 331 Table 334 Table 053 Table 214 Table 216 Table 218 Logistic criteria	Version 2.6: Reference Data New table New table CountryCodes removed Art/Lnk removed (table 329) New table New table Multiple fields not used anymore. One of these is used different now: <i>CritUsage</i> Product information New table New table New table ANNEX I added
2.0.6	2.0.7	February 2021	Table 214 Table 332 Table 333 Table 331	Fieldname changed to <i>PackWeight</i> Key Table for <i>PackageType</i> corrected to 739 Error Correction in field <i>CritNo</i> Length is 4 (instead of 3) Correction of field positions Change of sort order
2.0.7	2.0.8	April 2021	Table 053	<i>CritUsage</i> marked as "for future usage".



Source version	Target version	Published	Place of change	Short description of change
			Table 214 Table 043	Correction in positions Change in <i>DeleteFlag</i>
2.0.8	2.0.9	May 2021	Table 231 Deltas	Some error correction on filetypes in comment Chapter "transport of deltas" removed as it is outdated
2.0.9	2.0.10	June 2021	Tables 040/043 Tables 400 Table 218	Error correction – indication of optional fields Annotation about consecutive numbering of sequence numbers in linkages is removed. It was added to implement the Delta deliveries. As these "Deltas" are not an option anymore and the data does not yet (need to) fit to this requirement this part becomes unnecessary. Changes in order to make the structure more flexible.
2.0.10	2.0.11	July 2021	Table 331 Table 333 Table 212	New flag "OnlyArticle" added in alignment with DQM measures. Error correction in type of field TermNo ('N' instead of 'C') Comment about "usage" field added. Comment added Type of field <i>QuantUnit</i> corrected to 'N'
2.0.11	2.0.12	September 2021	General Table 331 Table 209 General	First general part restructured New chapter "About packaging ..." added Some clarification on content and meaning of "usage" field Delivery date or field "OnlyArticle" added Added comment on leading '0' in GTIN New chapter: "New TecDoc Format content and structures – a general remark"



Source version	Target version	Published	Place of change	Short description of change
2.0.12	2.0.13	October 2021	TecDoc® data guide Table 218 Table 231 Table 100	New: Description of TecDoc® data guide in ANNEX 2 Two new tables: 900, 990 Field <i>RecipientID</i> is set to Character of length 4 (optional field) Change in annotation below table New rules for image files of type JPG, PNG, BMP Error correction in record length (41 → 40)
2.0.13	2.0.14	December 2021	Table 014 Multiple tables New chapter	Additional comment on document type 08 Delete-Flags removed where they have not been used for a long time Additional chapter "Mandatory attributes of the linkage target tables"
2.0.14	2.0.15	March 2022	Format Version 2.7 Table 331 Table 135 Multiple Changes	Note annotation in chapter about changes in version 2.7 Change in footnote about usage = '9' New table (Israeli Numberplates) Format changes valid from Data Release DR2223 Change in Primary Key and Sort Order in tables 206, 232, 401, 432 New table 340 Format changes valid from data Release DR2236 New table 005 Format changes valid from data Release DR2241 Change in table 209
2.0.15	2.0.16	May 2022	Generic Article	General description: Typo corrected as table reference is 331 instead of 339



Source version	Target version	Published	Place of change	Short description of change
			Table 50	Duplicate entry removed
			Table 180	Format changes valid from Data Release DR2223 New table (this was added in version 2.0.15 already but not mentioned in change history) Key Table Number defined
			Tables 206, 232, 401, 432	Some annotation on Change in Primary Key and Sort order in tables 206, 232, 401, 432 Sort order corrected
			Tables 110, 120, 124, 532, 534, 535, 541, 543, 125, 155, 537, 160, 164	Additional hint in Description column that "Model Year" contains the information about the " Construction Year ".
			Table 005	Key Table numbers defined
2.0.16	2.0.17	June 2022	Table 001	Editorial change in Format Version field
			Table 005	Error corrections:
			Table 900	UniqueNumber 2 / UniqueNumber 3 is of type 'C' (instead of 'N')
			Tables 328, 329, 330	Announced for deletion with Reference Data version1222 (November, 14 th 2022)
2.0.17	2.0.18	August 2022	Table 005	Error correction in record length Multiple further error corrections (type fields)
			Table 110	Error correction in note at the end of the table
			Table 900	Data Guide: New <i>usage</i> for key table values
			Article Data Tables Linkage Data Tables	Some simplified class diagrams are added to show the major allocations and dependencies in both data domains
			Table 180	Some corrections in type fields (key tables)



Source version	Target version	Published	Place of change	Short description of change
2.0.18	2.0.19	September 2022	Table 005 Table 331	Additional information of content in first deliveries. Error correction in timing of 328/329/330 replacement
2.0.19	2.0.20	December 2022	Table 331 Table 209	Error correction in timing of 328/329/330 replacement (14.5.23 → 15.5.23) Editorial change in Type of field "GTIN" to remove an inaccuracy and reflect the long-standing practice of GTIN numbers
2.0.20	2.0.21	February 2023	Tables 214/216 Table 231 « Data Types ... »	Some error corrections on article numbers to be used in packaging hierarchy. Error corrected. Max. permitted filesize is 400kB Some comments on optional content of Primary Key fields.
2.0.21	2.0.22	April 2023	Tables 214/216/218 Table 155 Logistic Criteria Table 231 Table 160	Not supported anymore (temporarily) CC in litres .. "* 100" added (error correction) Four new items (HS-Code, measurements of end user units) Recommendation to limit characters to be used in filenames. Add unit for DrivHeightFrom/ DrivHeightTo
2.0.22	2.0.23	April 2023	Table 231 Table 900/9990	Restriction for Logo file types added "*" removed from permitted characters in filenames. TecDoc Data Guide: New DQM usage added
2.0.23	2.0.24		Table 050 Table 231	Field "multiple" --- not just for multiple use of criteria on linkages Change in comments for document type "ZIP". Hint about filenames not to be handled case sensitive.



Source version	Target version	Published	Place of change	Short description of change
			Table 146	Typo in Primary Key corrected
			Table 201	Currency Code to be taken from KT 150

Contents

1	General Information	13
	Data Packages	14
	Data Types / Mandatory and optional content.....	14
	Unicode	14
	TAF vs. CSV (for data Package recipients).....	16
	TecDoc Format versions information.....	18
	New TecDoc Format content and structures – a general remark.....	18
	Changes in TecDoc Format version 2.5 (available in January 2021).....	19
	Changes in TecDoc Format version 2.6 (not available before July 2021)	20
	Changes in TecDoc Format version 2.7 (different dates in 2022)	22
	Various information on content	24
	9-digit KTypNr/NTypNr.....	24
	Vehicle Classes	26
	Mandatory attributes of the linkage target tables	29
	About Packaging, Quantity Units and Lot Sizes	31
2	Data Exchange Operations Tables	32
	001 Header	33
3	Reference Data Tables	34



005 Reference Data Announcements (RemainToDelete List)	35
General Reference Data	37
010 Country Table	38
012 Country and Language-dependent Descriptions	39
013 Country Groups	40
014 Document Types	41
020 Language	42
030 Language Descriptions	43
050 Criteria Table	44
051 Key Tables	47
052 Key Table Entries	48
Reference Data for Logistics Information	49
031 Language Descriptions for Article Criteria (Logistics) ... New table in format version 2.5	50
053 Criteria Table (Logistics) ... New table in format version 2.5	51
334 Generic Articles requiring a Safety data Sheet ... New table in format version 2.6	53
Manufacturers and Model Series	54
100 Manufacturer	55
103 Manufacturer-KBA Reference	56
110 Vehicle Model Series	57
115 Linkage Target Types – Mappings	58
Passenger Car Information	60
120 Vehicle Types	61
121 KBA Type Allocation	63
122 Vehicle Country Restriction	64
123 Allocation of Type Mine Numbers to Vehicle Types	65
124 Vehicle Country Specifications	66
126 Swiss Type Number Allocation to Vehicle Types	67
127 Netherlands Number Plate to Vehicle Type Allocation	68
128 Allocation of Swedish Number Plates to Vehicle Types	69
129 Austrian NatCodes	70
140 Additional Descriptions to Vehicle Model Series	71
143 Allocation of Model Types to Model Series	72
144 Additional Vehicle Type Descriptions	73
145 Model Type	74
146 Body Type Synonyms	75
147 Drive Type Synonyms	76
Commercial Vehicle Information	77
532 CV Types	78
533 CV Types Country Restrictions	79
534 CV Country Specific Deviations	80



535 CV Secondary Types	81
536 CV Secondary Types Country Restrictions	82
538 Allocation of CV to CV ID Numbers	83
539 Country Restrictions for the Allocation of CV to ID Numbers	84
540 CV Types Voltages	85
541 CV Driver Cabs	86
542 CV Driver Cab Country Restrictions	87
543 Allocation of Driver Cabs to CVs	88
544 Transmission.....	89
545 Transmission Country Restrictions.....	90
546 Allocation of a Transmission to a CV	91
550 CV Wheelbase	92
551 CV Suspension	93
552 CV Tyres ⁹⁴	
553 CV Chassis	95
554 CV Producer-IDs	96
555 CV Producer-Ids Country Restrictions	97
General Vehicle Information.....	98
180 Engine output and vehicle performance.....	99
Engine Information	100
125 Engine Number Allocation to Vehicle Types	101
155 Engines 102	
156 Engine Country Restrictions	104
537 CV Types and Engine Allocation	105
Axle Information.....	106
160 Axle	107
161 Axle-Body Types.....	108
162 Axle-Wheelbases.....	109
163 Axle-Brake-Size.....	110
164 Allocation of Axle-types to CV Types.....	111
Search Structure	112
301 Tecdoc Search Structure	113
302 Allocation of GenArt to Search Structure	114
304 Allocation of Criteria to the Search Structure.....	115
305 Quick-start Icons	116
306 Allocation of Quick-start Icons to Product Areas.....	117
307 The Allocation of Quick-start Icons to Nodes/Leaves within one Product Area.....	118
Generic Articles	119
320 Generic Articles	120
323 Standardised Article Description	121



324 Assembly Groups	122
325 Purpose of Use	123
327 Generic Article Synonyms	124
328 Mandatory Criteria	125
329 Proposed Criteria	126
330 Allocation of Criteria Values to GA Criteria (until Reference Data version 1122)	127
331 Criteria allocated to Generic Articles ... New table in format version 2.6	128
332 Allocation of Criteria Values to GA Criteria (new TA DQM standard) ... New table in format version 2.6	130
333 Criteria constraints ... New table in format version 2.6	131
340 DQM – Generic Articles and Engine Types Permission	133
4 Data Supplier Data	134
General Supplier Data Tables	135
035 Text Modules	136
040 Data Supplier Main Address	137
042 Data Supplier Logos	138
043 Data Supplier Addresses	139
Article Data Tables	140
200 Article Table	143
201 Price Information	144
202 Article Country Restrictions	146
203 Reference Numbers	147
204 Superseding Articles	149
205 Parts Lists	150
206 Article Information	152
207 Trade Numbers	154
208 Parts List Criteria	156
209 GTIN	157
210 Article Criteria	159
211 Article to Generic Article Allocation	161
212 Country-Specific Article-data	162
215 Parts Lists Country Restrictions	163
217 Allocation of Parts-List-Coordinates to Context-sensitive Graphics	164
222 Accessory Lists	165
228 Accessory Lists Criteria	166
231 Graphics / Documents	167
232 Allocation of Graphics to Article Numbers	170
233 Context Sensitive Graphics	172
Logistics Data Tables	173
213 Article Criteria (Logistics) ... New table in format version 2.5	174
214 Article Packaging Items ... New table in format version 2.6	175



216 Article Packaging Items – Country Restrictions ... New table in format version 2.6	178
218 Packaging Items Lot Sizes ... New table in format version 2.6	179
Linkage Data Tables	180
400 Article Linkage.....	181
401 Search Information Texts	183
403 Country restriction of the linkage.....	185
404 Sorting of the linkage	186
410 Linkage attributes	187
432 Linkage-dependent Graphics/Documents.....	188
5 ANNEX 1: Logistic Criteria for end user units (table 053 and 213)	190
Amount of Articles	191
Combined Nomenclature	192
HS-Code	193
Packaging Type.....	194
Weight of article incl. packaging	195
Measurement of end user unit: Height	196
Measurement of end user unit: Width	198
Measurement of end user unit: Depth	199
Country Of Origin (coming soon!)	201
ANNEX 2: TecDoc® data guide (tables 900 and 990)	202
900 TecDoc® data guide.....	203
990 TecDoc® data guide – Terms and Documents	205



1 General Information



Data Packages

Data Types / Mandatory and optional content

The following data types are indicated in the *type*-column of each table:

C: Field contains characters (refer to chapter 'Unicode' below)

U: Field allows Unicode characters (refer to chapter 'Unicode' below)

N: Numeric content – more details might be given in table 333

Type information in brackets – (C), (U), (N) indicates information that is optional or conditional optional. Further information might be given directly at the table documentation.

Can this documentation be taken as database design?

There is one constellation in TecDoc Data Format files (TAF and CSV) that might confuse users of the data that regard the TAF documentation to be a direct design document for a database implementation. It is not! The entire work on data types, keys and constraints is still to be performed by a database expert. The format description is a guide but not a 100% solution of your specific solution inside your individual infrastructure. One topic in particular is often subject to discussion.

There are some so called Primary Keys that include optional information.

From a database perspective this is not an option. In terms of TAF files this constellation is chosen when country information is an optional part of what we call the Primary Key information. In this case the not restricted record (empty country field – three blanks in TAF files) is a valid entry as well and needs to be considered when making the records unique.

Please consider this situation in many tables containing product information (200ff).

Unicode

All information on record length refers to the **maximum** record length plus CR/LF.

A record may be shorter if the rest of the record consists only of blanks. However, records always end with a CR/LF (Carriage Return (decimal 13) / Line Feed (decimal 10) combination.

References to **Key Tables** within this format description are abbreviated with "**KT**".

References to other **data tables** in the format description are marked with "->".

The format is Unicode-compatible. The following points have to be observed:



- all data tables are coded in UTF-8.
- Unicode characters may only be used in language-dependent fields in the tables 012, 030, 031, 035 and 327. These fields are marked with the data type "U" in the column "Type".
- **Unicode in terms of the TecAlliance services is restricted to characters of the Basic Multilingual Plane of the categories L (Letter), M (Mark), N (Number), P (Punctuation), S (Symbol), und Zs (Space)**
- Article Number (ArtNo) is of type "U" as well
- All other fields are still limited to the character set of ISO 8859-1.
- The field 'key' in table 052 may only contain the characters A..Z, a..z and 0..9.
- TxtModNo may contain the scope of 7-Bit ASCII (with the exception of control characters and TAB)

Primary Key Information

The Primary Key that is given for each table indicates the PK for one single brand. If the data of different brands is merged into one single database each Primary Key needs to be amended by the *BrandNo* field.



TAF vs. CSV (for data Package recipients)

The regular format for data exchange is based on text files in which the fields within the individual data records of the tables have a fixed length and a fixed position.

The documentation of the individual tables in this document reflects exactly this table structure. Each field has a length and a position (column) within the table. This format is established and recognized in the market.

With the beginning of the third quarter of 2020, the recipients of data packages (data users) will alternatively have the data packages available in CSV format.

In this CSV format, the individual fields in each data record (row) are delimited by a fixed separator.

The structure of the CSV files follows the following rules:

- The file has the name <table number>.csv
- The first line contains the field names (separated by a semicolon)
- Separator is the semicolon (;)
- The individual values are enclosed in quotation marks (")
- Fields without values are specified in the form "".
- Each CSV table contains the same fields as the corresponding table in unchanged order.
- The contents of the fields correspond to those of the version 2.5 format. Numeric fields are therefore output analogously with leading zeros.
- All files are UTF-8 encoded.

An example from the TecDoc reference data (first data records of the country table 10):

```
Reserved;BrandNo;TableNo;CountryCode;TermNo;Traffic;CurNo;CurCode;CurTermNo;AreaCode;IsGroup;ISOCode2;ISOCode3;ISOCodeNo
";"9999";"010";"A";"000009857";";";"978";"EUR";"000012252";";";"0";"AT";"AUT";"040"
";"9999";"010";"ADN";"000009858";";";"886";"YER";"000012274";";";"0";"YE";"YEM";"887"
";"9999";"010";"AEU";"000010027";";";"000";";";";";"1";";";";"
";"9999";"010";"AFG";"000009859";";";"971";"AFA";"000012208";";";"0";"AF";"AFG";"004"
";"9999";"010";"AIA";"000010068";";";"951";"XCD";"000013343";";";"0";"AI";"AIA";"660"
";"9999";"010";"AK";"000010051";";";"000";";";";";"1";";";";"
";"9999";"010";"AL";"000009860";";";"008";"ALL";"000012209";";";"0";"AL";"ALB";"008"
";"9999";"010";"AM";"000010035";";";"000";";";";";"1";";";";"
";"9999";"010";"AN";"000009947";";";"532";"ANG";"000012211";";";"0";"AN";"ANT";"530"
";"9999";"010";"AND";"000009861";";";"978";"EUR";"000012252";";";"0";"AD";"AND";"020"
";"9999";"010";"ANG";"000009862";";";"973";"AON";"000012212";";";"0";"AO";"AGO";"024"
";"9999";"010";"APA";"000010066";";";"000";";";";";"1";";";";"
";"9999";"010";"AQ";"000010100";";";"000";";";";";"0";"AQ";"ATA";"010"
";"9999";"010";"ARM";"000010044";";";"051";"AMD";"000012210";";";"0";"AM";"ARM";"051"
";"9999";"010";"AS";"000010039";";";"000";";";";";"1";";";";"
";"9999";"010";"ASE";"000010087";";";"000";";";";";"1";";";";"
";"9999";"010";"ASM";"000010146";";";"840";"USD";"000012346";";";"0";"AS";"ASM";"016"
";"9999";"010";"ATG";"000010070";";";"951";"XCD";"000013343";";";"0";"AG";"ATG";"028"
```




Recipients of data packages can choose to be delivered in the classic TAF format (fixed record lengths) or in CSV format. A comprehensive stock of test data in CSV format is available.



TecDoc Format versions information

New TecDoc Format content and structures – a general remark

It turns out in the past months and years that new requirements for new content in TecDoc data are a constant flow of input and in many cases need to be processed immediately – e.g. to support new validations in order to increase data quality and to support DQM measures.

Therefore we reserve the option to provide additional structures and to extend existing tables by additional fields at the end of the table structure without a pre-announcement six months upfront.

We will of course announce the additional content but the time between announcement and implementation might be shorter.

Please note that this only applies for additional structures that do not interfere with the existing structures and content in a way that you would not be able to use the existing data without any change.

Starting Version 2.7 new version numbers will only be introduced in case of breaking changes inside the TecDoc format. A breaking change is one that requires adjustments by any user of the effected structures.



Changes in TecDoc Format version 2.5 (available in January 2021)

The version 2.5 is published in order to add tables for article criteria from the logistics area of application. "Logistic information" in this case means any logistic information concerning the article itself. Any further information on packaging hierarchies is not part of the TecDoc Format 2.5.

To make the usage possible as an **optional AddOn** without interfering with existing data and processes we add three tables that include the necessary information.

The structure follows the generic approach of article criteria as given and used in the tables 50, 30 and 202.

The new tables are added as follows:

031: Language Descriptions for Article Criteria (Logistics)

053: Criteria Table (Logistics)

213: Article Criteria (Logistics)

Furthermore we integrated some minor extensions in order to close gaps or correct errors from the past versions.

Please read the chapter "Format Changes" for all the details.

More detailed information about the specific criteria and the schedule have been and will be published in the regular Data Distribution Mailings and in the Data Distribution wiki at www.tecalliance.net



Changes in TecDoc Format version 2.6 (not available before July 2021)

The version 2.6 is published in order to support two major topics:

1) Data Quality improvements (DQM) / Reference Data table changes

The data Quality activities carried out continuously by the TecAlliance in close alignment with customer experts resulted in a more standardized way to use criteria in two ways:

- Which criteria to use for specific Generic Article
- How to format the value of a criteria

Both topics are considered:

- New table 331 containing
 - o All mandatory criteria for certain Generic Articles
 - o All optional criteria for certain generic Articles permitted for use on the first catalogue page
 - o Criteria that are not permitted to be used at all for certain generic criteria
- New table 332 containing the permitted key values for the key-table criteria of table 331 (similar to table 330)
- New table 333 containing formatting constraints for criteria. General constraints or some special rules for specific Generic Article context are given.

The structure and content of tables 328 / 329 /330 remains available for compatibility reasons and for those Generic Articles where the DQM measures have not been finished.

Minor changes:

Tables 328/329 do not contain any country restriction option any more. The field was not used at all and will be set to "reserved"

The fields *Art* and *Lnk* in table 329 are not used anymore and are set to const=0 for compatibility reasons. Table 050 is the single point of truth for this information.

2) Logistic Information

The option to add logistical criteria to end user units (Format Version 2.5 extension) is further extend by the option to give information about the packaging hierarchy for shipping.

- New table 214 containing the packaging items including the amount objects inside and the type, measurement and weight of the packaging unit. A standard for measuring packaging objects is provided as well.
- New table 216
Contains optional country restrictions for a certain packaging unit.
- New table 218
Packaging Items Lot Sizes
- New table 334
containing a list of Generic Articles that might require the distribution of a safety data Sheet as part of the Documents (Digital Assets). A new validation might be in place to recommend (and later require) the existence of a safety data sheet for products of Certain Generic Articles.
- Change in table 053:
The criteria for logistical information are changed in a way that some information is not used anymore. These are set to const = 0 for compatibility reasons.
Furthermore one flag is added instead (at an already existing and not used position) to indicate if a logistics criteria is permitted for use on end user units (table 213), on packaging units (table 214) or both of them.

Changes in TecDoc Format version 2.7 (different dates in 2022)

Quarter	Data Release	Date	Topic	Chapter\Table No.
Q2	2223	13.06.2022	DQM	340
	2223	13.06.2022	Primary Key 232	232
	2223	13.06.2022	Primary Key 401	401
	2223	13.06.2022	Primary Key 206	206
	2223	13.06.2022	Primary Key 432	432
	2223	13.06.2022	Safety Data Sheet	See below
	2213	04.04.2022	Real weekly updates	See below
Q3	2236	12.09.2022	RemainToDelete	005
Q4	2241	17.10.2022	Electric Vehicles (engine output)	180
	2241	17.10.2022	GTIN 14 (DMM version 7.2)	209

Safety Data Sheets

This is not a real change but a clarification of how a safety data Sheet should be delivered and how a catalogue system etc. might indicate and distinguish Safety Data Sheets from other documents.

- 1) You can use any Document Type (table 014) except 01 (BMP) or 07 (GIF)
- 2) Table 231.DocTermNo must be set to value '6' (Safety Data Sheet)
 (The field is named "Standard Description" in DMM)



In most cases the documents probably will be delivered as PDF files or as URL (linking to the document hosted by the supplier).

However the content is under the responsibility of the supplier. He needs to take care that he required information is provided.

Real weekly updates

Starting April 2022 the Data Package infrastructure changes to a really weekly delivery where the main events always happen on the same day in week as follows:

Thursday: Data delivery Deadlines

Monday: Delivery of Data Packages and Reference Data

Wednesday: Update of TecAlliance Online Solutions (Webservice, Catalogue, ...)

The official calendar will be published via the regular data Distribution mailing and in the TecDoc download area of <https://www.tecalliance.net/tecdoc-downloads/>

Various information on content

9-digit KTypNr/NTypNr

Of the 9 digits in the fields KTypNr/NTypNr, or their counterparts in VKN_VALUE and VknZielArt, currently only the last 6 digits are used for the numbering of vehicles. The first three digits remain unused until further notice and are to be filled with leading zeros "000" in the data exchange format.

Please Note: The field VKN_VALUE in the data table 222 is currently only 6 digits. This designing error was only noticed in April 2013 and will be rectified at the next format version. Due to the lack of time until the first pilot in the fall of 2013 the adaptation to 9 digits will not be done now.

Affected tables:

- 120 Vehicle types
- 121 KBA type allocation
- 122 Vehicle country restriction
- 123 TypeMine type allocation
- 124 Vehicle country specifications
- 125 Engine number allocation to vehicle types
- 126 Swiss type number allocation to vehicle types
- 127 Allocation of Dutch number plate to vehicle type
- 128 Allocation of Swedish number plates to vehicle types
- 129 Austrian NatCodes
- 144 Additional vehicle type descriptions
- 145 Build types
- 147 Drive type synonyms
- 164 Allocation of axle types to CV types
- 222 Accessory lists (VKN_VALUE) -> see note above
- 400 Article linkage (VknZielNr)
- 401 Search menu information texts (VknZielNr)
- 402 Linkages not to be displayed in certain countries (VknZielNr)
- 403 Country restriction of the linkage (VknZielNr)
- 404 Sorting of the linkage (VknZielNr)
- 410 Linkage attributes (VknZielNr)
- 432 Linkage-dependent graphics/documents (VknZielNr)
- 532 CV types
- 533 CV types country restrictions
- 534 CV country specific deviations
- 535 CV secondary types
- 536 CV secondary type country restrictions
- 537 CV types engine mapping
- 538 Mapping of CV to CV-ID numbers
- 539 Country restriction of the mapping of CV to CV-ID numbers



540 CV types voltages
543 Mapping of driver cabs to CVs
546 Mapping of transmissions to CVs
550 CV wheelbase
551 CV suspension
552 CV tyres
553 CV chassis



Vehicle Classes

The following additions will be available for productive use in the fourth quarter of 2019 at the earliest. Please note the announcements of TecAlliance via data Distribution Mailing.

The format provides a definition for a fine-grained classification of vehicles. This classification opens up the possibility to clearly identify further vehicle classes within the vehicle tables 120 (passenger car/kTyp) and 532 (commercial vehicle/nTyp). This extension goes beyond the existing vehicle classes "Transporter" and "Motorcycles" and focuses primarily on the field of electromobility.

Without adjustments in the data exchange structure, it is thus possible to derive further vehicle classes (e.g. electric motorcycles) from the identifying keys kType and nType according to a fixed set of rules.

These new vehicle classes can be understood as extensions in the sense of the linkage target types of the data structure. You can find these valid linkage target types in key table 271 as follows:

2	TecDoc PC
3	TecDoc Motorcycle
4	TecDoc E-PC
5	TecDoc E-LCV
6	TecDoc E-Motorcycle
16	TecDoc CV
17	TecDoc Bus
18	TecDoc Tractor
20	TecDoc E-Bus
999	TecDoc LCV

In the context of linkages (tables 400ff), only linkage target types 2 (passenger cars) and 16 (commercial vehicles) are used so far. The present set of rules now permits a resilient and comprehensible transfer of this rather rough view into a more fine-grained vehicle structure.

In this format description we provide the following information:

- 1) A list of the vehicle classes in the TecDoc data (KT271 - see above).
- 2) A set of rules for the conversion of the kTyp/nTyp system into a more detailed view.
- 3) A reference to the respective attributes provided for the vehicle classes in Tables 120 and 532.
- 4) A new record type 115 with the current mappings of kType/nType relationship target types (2/16) derived from 2) for the extended view according to key table 271 (see above). This record type is part of the data packages until further notice.

Linkage Target Class	LNKTargetType	Migration rule
TecDoc PC	2 -> 2	All vehicles from table 120 that do not belong to one of the following Linkage Target Classes: <ul style="list-style-type: none"> - TecDoc Motorcycle (3) - TecDoc E-PC (4) - TecDoc E-LCV (5) - TecDoc E-Motorcycle (6) - TecDoc LCV (999)
TecDoc Motorcycle	2 -> 3	All vehicles from the passenger car table 120, which meet the following criteria: 120.BodyType = 051 AND 120.EngType <> 040
TecDoc E-PC	2 -> 4	All vehicles from table 120 with 120.EngType = 040 AND 120.FuelType = 11, that do not belong to one of the following Linkage Target Classes: <ul style="list-style-type: none"> - TecDoc E-LCV (5) - TecDoc E-Motorcycle (6)
TecDoc E-LCV	2 -> 5	All vehicles from the passenger car table 120, which meet the following criteria: 120.EngType = 040 120.FuelType = 11 110.Transporter = 1 for 110.KModNo = 120.KModNo (LCV model series)
TecDoc E-Motorcycle	2 -> 6	All vehicles from the passenger car table 120, which meet the following criteria: 120.BodyType = 051 AND 120.EngType = 040 AND 120.FuelType = 11
TecDoc CV	16 -> 16	All vehicles from the commercial vehicle table 532, that do not belong to one of the following Linkage Target Classes <ul style="list-style-type: none"> - TecDoc Bus (17) - TecDoc E-Bus (20) - TecDoc Tractor (18)
TecDoc Bus	16 -> 17	All vehicles from the commercial vehicle table 532, which meet the following criteria: <ul style="list-style-type: none"> - 532.BodyType = 1 - 532.EngTYpe <> 040
TecDoc E-Bus	16 -> 20	All vehicles from the commercial vehicle table 532, which meet the following criteria: <ul style="list-style-type: none"> - 532.BodyType = 1 - 532.EngType = 040



Linkage Target Class	LNKTargetType	Migration rule
TecDoc Tractor	16 -> 18	All vehicles from the commercial vehicle table 532, which meet the following criteria: - 532.BodyType = 9
TecDoc LCV	2 -> 999	All vehicles from the passenger car table 120, which meet the following criteria: 120.EngType <> 040 110.Transporter = 1 for 110.KModNo = 120.KModNo (LCV model series)



Mandatory attributes of the linkage target tables

The attributes in vehicle tables 120 and 532 are primarily designed for "classic" passenger cars and commercial vehicles with combustion engines – and so are other linkage targets engines and axles. The tried and tested granularity in the area of car (kTyp) and commercial vehicle (nTyp) is based on the system of always providing a defined number of features and clearly describing vehicles. With the integration of vehicles in the area of electromobility, this basis needs some adjustment in definition of mandatory information

In addition to the respective reference to other TecDoc Format tables, each table for linkage targets contains a number of mandatory attributes that must be filled. Since several linkage targets are summarized in the TecDoc Format tables, there are exceptions which are also mentioned in the following paragraphs.

Table 120 - Mandatory Attributes PC Types

Name	Old name	Key table	Exceptions
DriveType	DriveType	82	
BodyType	BodyType	86	
ModYFrom	Bjvon		
Lit	Lit		not for electric engines
ccmTech	ccmTech		not for electric engines
FuelType	FuelType	182	
FuelMixForm	FuelMixForm	97	not for electric engines
KW	KW		
HP	HP		
Cyl	Zyl		not for electric engines
EngType	EngType	80	
Valves	Ventile/Brennraum		not for electric, wankel and two stroke engines

Table 155 - Mandatory Attributes Engine

Name	Old name	Key table	Exceptions
EngCode	MCode		
kWFrom	kWvon		
HPFrom	Psvon		
ccTechFrom	ccmTechV		not for electric engines
Cyl	Zyl		not for electric engines
litTechFrom	LitTechV		not for electric engines
EngType	Motorart	80	
FuelType	KrStoffArt	88	
Valves	Ventile		not for electric, wankel and two stroke engines

Table 160 - Mandatory Attributes Axle

Name	Old name	Key table	Exceptions
Term	Bezeichnung		
AxleType	AchsArt	68	
AxleStyle	Ausführung	95	

Table 532 - Mandatory Attributes CV Types

Name	Old name	Key table	Exceptions
AxleConfig	Achsconfig	65	
BodyType	Bauart	67	
CcmTech	CcmTech		not for electric engines
KWFrom	KWvon		
HPFrom	PSvon		
EngType	Motart	80	
Tonnage	Tonnage		



About Packaging, Quantity Units and Lot Sizes

Logistic information about packaging and batch/lot size information is part of TecDoc data for a long time and is going to be extended by more reliable and well structured options step by step starting with version 2.6 of the TecDoc format.

The „classic“ part of the TecDoc data can be found inside the tables 200 and 212.

Both tables refer to the end-user unit. Table 212 allows information on the standard packaging of this end-user unit - how many units (QuantUnit) with how many items each (QuantPerUnit)? In relation to these units (QuantUnit), two batch sizes (BatchSize1, BatchSize2) can be listed in table 200 - in the sense of a hierarchy (BatchSize2 must be multiple of BatchSize1)

The new logistical information in table 214 (and 216) is intended to supplement (or also replace) this in a manner that a complete packaging hierarchy can be provided in which each outer packaging has its own article number.

Table 218 extends this option to include lot sizes that are uniquely assigned to the end-user unit or to a defined outer packaging and that can optionally also be provided individually for defined trading partners. For the latter option, please refer to the mailing to be published at the beginning of August.

In fact, there are two areas that contain similar information. We have chosen this approach in order not to force anyone into using a new structure. We believe that the new structures will be easier, clearer and more flexible to use for logistical purposes. We therefore recommend any data supplier to switch to this new structure as soon as data maintenance is available in DMM software (please follow the announcements).



2 Data Exchange Operations Tables



001 Header

Source: Data Supplier / TecDoc

Contents: Header stating version and date
 Length: 58

Name	Old Name	Pos	Length	Type	Description
BrandNo	<i>DINr</i>	000	4	N	Data Supplier Number Constant (-> 040)
TableNo	<i>SA</i>	004	3	N	Data Table Constant = 001
Data Release	<i>Data Release</i>	007	4	N	Version (Data Release) in the format xxyy
VersionDate	<i>Datum</i>	011	8	N	Version date in the format YYYYMMDD
Full	<i>KZVoll</i>	019	1	N	'1' when complete delivery, otherwise '0'
ManNo	<i>HerNr</i>	020	6	N	Vehicle Manufacturer Number
BrandName	<i>Marke</i>	026	20	U	Brand (specified by TecDoc)
RefDataVersion	<i>Referenzdaten</i>	046	4	N	Reference data version in the format xxyy
Reserved	<i>Vorversion</i>	050	4	(N)	Not used anymore
Format	<i>Format</i>	054	3	C	Constant "<current format version>"
DeleteFlag	<i>Lösch-Flag</i>	057	1	N	1=Delete all data records of the brand, otherwise '0'

(*) Type 'U' starting Data Release 0519 – type 'C' until then

Comment: Exactly 1 data table 001 must be present.

The delete-flag in table 001 differs in the treatment from the delete-flags of the other tables. It indicates the deletion of a complete brand.



3 Reference Data Tables



005 Reference Data Announcements (RemainToDelete List)

(from Data Release DR2236)

The announcements of major changes in the TecDoc reference data today is provided in Excel and PDF files that are hard or even impossible to use for an automated process.

Reference Data will therefore be extended by information about proposed deletions or significant changes like changing a criteria's name.

However the existing Remain To Delete List will be provided as usual.

Source: TecDoc

Contents: Announcements for Reference Data deletions
Length: 146
Sorting: DelType, DelNo, DelStatus
Primary Key: DelType, DelNo, DelStatus

Name	Pos	Length	Type	Description
BrandNo	000	4	N	Data Supplier Number Constant = 9999
TableNo	004	3	N	Data Table Constant= 005
DelType	007	3	C	Type of object to be announced for deletion (-> Key table 748)
DelNo	010	9	N	ID of object to be announced for deletion
DelStatus	019	3	C	Status information (-> Key Table 747)
DelDataRelease	022	4	N	Reference Data Version of deletion
DelDate	026	8	(N)	Date of deletion YYYYMMDD (Publication)
ReplacementNo	034	9	(N)	Number of object that replaces the one that is (proposed to be) deleted
Reason	043	3	C	Reason for deletion (-> Key Table 749)
Comment	046	100	(C)	Additional comment (English)



Content of table with first deliveries in 2022

First version of table 005 contains announcements for deletion of these objects:

PC / KType	(DelType = 1)
LCV KType	(DelType = 3)
CV / Ntype	(DelType = 2)
Model Series	(DelType = 4)
Engine	(DelType = 5)
Criteria	(DelType = 6)
Key table values for Deletion	(DelType = 7)
GenArt for Deletion	(DelType = 8)
Manufacturers for Deletion	(DelType = 9)

Further content will be delivered step by step



General Reference Data



010 Country Table

Source: TecDoc

Contents: Description of all countries and relevant information
 Length: 71
 Sorting: CountryCode
 Primary Key: CountryCode

Name	Old name	Pos	Length	Type	Description
Reserved	<i>Reserviert</i>	000	22	C	Constantly blank
BrandNo	<i>DLNr</i>	022	4	N	Data Supplier Number Constant = 9999
TableNo	<i>SA</i>	026	3	N	Data Table Constant = 010
CountryCode	<i>CountryCode</i>	029	3	C	Country Code (Vehicle Registration Number)
TermNo	<i>BezNr</i>	032	9	N	Description Number (-> 030)
Traffic	<i>Verkehr</i>	041	1	(C)	'L' = Left-hand traffic, 'R' = Right-hand traffic
CurNo	<i>WarNr</i>	042	3	(N)	Int. currency number according to ISO
CurCode	<i>WKZ</i>	045	3	(C)	Currency Code, i.e. EUR
CurTermNo	<i>WarBezNr</i>	048	9	(N)	Currency Description Number (-> 030)
AreaCode	<i>Vorwahl</i>	057	5	(C)	International Telephone Code
IsGroup	<i>IstGruppe</i>	062	1	N	Country Groups = 1, otherwise 0
ISOCode2	<i>ISOCode2</i>	063	2	(C)	2-digit ISO 3166-Code of the country
ISOCode3	<i>ISOCode3</i>	065	3	(C)	3-digit ISO 3166-Code of the country
ISOCodeNo	<i>ISOCodeNr</i>	068	3	(N)	Numeral ISO 3166-Code of the country



012 Country and Language-dependent Descriptions

Source: TecDoc

Contents: Country-dependent descriptions
Length: 104
Sorting: TermNo, CountryCode, LanguageNo
Primary Key: TermNo, CountryCode, LanguageNo

Name	Name Old	Pos	Length	Type	Description
Reserved	<i>Reserviert</i>	000	22	C	Constantly blank
BrandNo	<i>DLNr</i>	022	4	N	Data Supplier Number Constant = 9999
TableNo	<i>SA</i>	026	3	N	Data Table Constant = 012
CTermNo	<i>LBezNr</i>	029	9	N	Description Number
CountryCode	<i>LKZ</i>	038	3	(C)	Country Code (-> 010)
LanguageNo	<i>LangNo</i>	041	3	N	Language Number (-> 020)
Term	<i>Bez</i>	044	60	U	Descriptions

Annotation:

CC is an optional attribute what may be a problem from a technical point of view. Some Database Management Systems are not able to handle this 1:1. We recommend to implement a lookup on an artificial "CC" that is not used by TecDoc. We are working on future format generations that will not use constellations like that.



013 Country Groups

Source: TecDoc

Contents: Allocation of countries to country groups
Length: 35
Sorting: CountryGrp, CountryCode
Primary Key: CountryGrp, CountryCode

Name	Name old	Pos	Length	Type	Description
Reserved	<i>Reserviert</i>	000	22	C	Constantly Blank
BrandNo	<i>DLNr</i>	022	4	N	Data Supplier Number Constant = 9999
TableNo	<i>SA</i>	026	3	N	Data Table Constant = 013
CountryGrp	<i>CountryCode Grp</i>	029	3	C	Country Group Code (-> 010)
CountryCode	<i>LKZ</i>	032	3	C	Country Code (-> 010)



014 Document Types

Source: TecDoc

Contents: Definition of document types
 Length: 43
 Sorting: DocType
 Primary Key: DocType

Name	Old name	Pos	Length	Type	Description
Reserved	<i>Reserviert</i>	000	22	C	Constantly blank
BrandNo	<i>DLNr</i>	022	4	N	Data Supplier Number Constant = 9999
TableNo	<i>SA</i>	026	3	N	Data Table Constant= 014
DocType	<i>DokumentenAr t</i>	029	2	N	Unambiguous key of the document type
TermNo	<i>BezNr</i>	031	9	N	Term Number (->030)
Extension	<i>Extension</i>	040	3	(C)	File Extension (three blanks with document type "URL")

Document Types:

- 01: BMP
- 02: PDF
- 03: JPG
- 04: URL
- 05: JPG
- 06: PNG
- 07: GIF (to provide animations – max. Size of 3 MB)
- 08: ZIP (for 360° product images) (*)

(*) This type is not part of inbound data processing so as a Data Supplier you are not able to choose this document type via DMM software. It is just set up in case a Data User intends to integrate the 360° images into TecDoc format tables. Please read the information sheet for 360° graphics in case you like to know more.



020 Language

Source: TecDoc

Contents: Description of the languages used
Length: 47
Sorting: LangNo
Primary Key: LangNo

Name	Old name	Pos	Length	Type	Description
Reserved	<i>Reserved</i>	000	22	C	Constantly blank
BrandNo	<i>DLNr</i>	022	4	N	Data Supplier Number Constant = 9999
TableNo	<i>SA</i>	026	3	N	Data Table Constant = 020
LangNo	<i>SprachNr</i>	029	3	N	Language Number
TermNo	<i>BezNr</i>	032	9	N	Description Number (-> 030)
ISOCODE	<i>ISO Code</i>	041	2	(C)	2-digit ISO 639-Code of the language
Codepage	<i>Codepage</i>	043	4	(N)	Number of the Windows-Codepage for this language

030 Language Descriptions

Source: TecDoc / Data Supplier

Contents: Descriptions in different languages
Length: 102
Sorting: TermNo, LangNo
Primary Key: TermNo ,LangNo

Name	Old name	Pos	Length	Type	Description
Reserved	<i>Reserved</i>	000	22	C	Constantly blank
BrandNo	<i>DLNr</i>	022	4	N	Data Supplier Number Constant and 9999 for reference data
TableNo	<i>SA</i>	026	3	N	Data Table Constant = 030
TermNo	<i>BezNr</i>	029	9	N	Description Number
LangNo	<i>SprachNr</i>	038	3	N	Language Number (-> 020)
Term	<i>Bez</i>	041	60	U	Descriptions
DeleteFlag	<i>Lösch-Flag</i>	101	1	N	<i>Const = 0</i>

Notes: Text such as article additional descriptions are not saved with the article but are registered in a separate language table for reasons of international compatibility. Access to the relevant text is facilitated by means of a description number and the relevant language number.

Data suppliers can create their own language-specific texts apart from the data table of description texts provided by TECDOC. The first 100000 numbers are reserved for TECDOC descriptions.

A description number should not be repeated within one language.



050 Criteria Table

Source: TecDoc

Contents: Description of all criteria
 Length: 59
 Sorting: BrandNo, CritNo
 Primary Key: BrandNo, CritNo

Name	Old name	Pos	Length	Type	Description
BrandNo	<i>DLNr</i>	000	4	N	Data Supplier Number Constant = 9999
TableNo	<i>SA</i>	004	3	N	Data Table Constant= 050
CritNo	<i>KritNr</i>	007	4	N	Criterion Number
TermNo	<i>BezNr</i>	011	9	N	Description Number (-> 030)
Type	<i>Typ</i>	020	1	C	Criterion Type ('A' = Alphanumerical, 'N' = Numerical, 'D' = Date 'K' = Key, 'V' = without value)
MaxLen	<i>MaxLen</i>	021	2	(N)	Maximum length of criterion value
OKArticle	<i>OK-Artikel</i>	023	1	N	Criterion may be used for article (SA 210) (0 = No, 1 = Yes)
TabNo	<i>TabNr</i>	024	3	(N)	Number of the Key Table for type 'K'
OKCV	<i>OK-NKW</i>	027	1	N	Criterion may be used for CV linkages (0 = No, 1 = Yes)
OKPC	<i>OK-PKW</i>	028	1	N	Criterion may be used for PC linkages (0 = No, 1 = Yes)
OKEngine	<i>OK-Motor</i>	029	1	N	Criterion may be used for engine linkages (0 = No, 1 = Yes)
OKDrivCab	<i>OK-Fahrerhaus</i>	030	1	N	Criterion may be used for Driver Cab linkages (0 = No, 1 = Yes)

PartLstCrit	<i>Stücklisten-Criterion</i>	031	1	N	Criterion may be used as Parts List criterion (SA208) (0 = No, 1 = Yes)
AccCrit	<i>Zubehör-Criterion</i>	032	1	N	Criterion may be used as Accessory List criterion. (DT228) (0 = No, 1 = Yes)
Multiple	<i>Mehrfach-verwendung</i>	033	1	N	Criterion may be used more than once (0 = No, 1 = Yes)
TermNoAbbr	<i>BezNrAbk</i>	034	9	(N)	Description number for the abbreviation (->030)
TermNoUnit	<i>BezNrEinheit</i>	043	9	(N)	BezNr for the unit (->030)
IntervalCrit	<i>IntervallCriterion</i>	052	1	N	Criterion is an interval criterion (0 = No, 1 = Yes)
SuccCrit	<i>Nachfolge-Criterion</i>	053	4	(N)	Criterion is successor to...
Delete	<i>Delete</i>	057	1	N	1: Criterion is proposed for deletion, otherwise 0
OKAxle	<i>OK-Achse</i>	058	1	N	Criterion may be used for Axle linkages (0 = No, 1 = Yes)

Notes:

The criteria table contains a selection of fixedly defined attributes; i.e. criterion 3 describes the equipment variation.

Any Data Supplier may request TecDoc to create new criteria needed for their articles/linkages. Such new criteria then also become available to all the other Data Suppliers.

A flag *OK-Transporter* is currently not planned. All attribute types with the flag *OK-PC* are permitted for the use with LCV linkages.

A flag *OK-Motorcycle* is currently not planned. All attribute types with the flag *OK-PC* are permitted for the use with MC linkages.

Criteria of type 'D' (date) must be given in the format 'yyyymm' (four-digit year, two-digit month, e.g. 202110 for October 2021)

Further standardisation of criteria usage depending on generic article is part of the DQM measures and might further restrict the usage of criteria (e.g. in tables 331, 332 and 333)



General validation rules on numeric criteria (type = 'N'):

1. Characters "0" to "9", comma ",", as well as plus "+" and minus "-" are permitted
2. A comma may not be used at the beginning or end of the value
3. A comma may only be used once within a value
4. Only the comma may be used as the decimal separator
5. Thousands separators must not be used
6. Exactly one "+" or exactly one "-" may only be used at the beginning of a numeric value
7. Spaces must not be used
8. All(!) characters are part of the maximum length of an attribute.

Please note that further standardisation of permitted values in criteria is given as Regular Expression in table 333.

051 Key Tables

Source: TecDoc

Contents: Table definition
Length: 43
Sorting: KeyTabNo
Primary Key: KeyTabNo

Name	Old name	Pos	Length	Type	Description
Reserved	<i>Reserviert</i>	000	22	C	Constantly blank
BrandNo	<i>DLNr</i>	022	4	N	Data Supplier Number Constant = 9999
TableNo	<i>SA</i>	026	3	N	Data Table Constant = 051
KeyTabNo	<i>TabNr</i>	029	3	N	Key Table Number
TermNo	<i>BezNr</i>	032	9	N	Key Table Name ¹ -> SA 30
KeyTabType	<i>TabTyp</i>	041	1	C	'A' = Alphanumeric, 'N' = Numerical
Delete	<i>Delete</i>	042	1	N	1: Key Table is proposed for deletion, otherwise 0

¹ References to Key Tables within this format description are designated by 'KT'



052 Key Table Entries

Source: TecDoc

Contents: Key Table Entries
 Length: 48
 Sorting: KeyTabNo, SortNo
 Primary Key: KeyTabNo, Key

Name	Old name	Pos	Length	Type	Description
Reserved	<i>Reserviert</i>	000	22	C	Constantly blank
BrandNo	<i>DLNr</i>	022	4	N	Data Supplier Number Constant = 9999
TableNo	<i>SA</i>	026	3	N	Data Table Constant = 052
KeyTabNo	<i>TabNr</i>	029	3	N	Key Table Number (->051)
Key	<i>Key</i>	032	3	C	Key Table Entry (numerical or alphanumerical depending on the Key Table type)
TermNo	<i>BezNr</i>	035	9	N	Description Number (->030)
SortNo	<i>SortNr</i>	044	3	N	Sort-Key for Sorting
Delete	<i>Delete</i>	047	1	N	1: Key Table Entry is proposed for deletion, otherwise 0



Reference Data for Logistics Information



031 Language Descriptions for Article Criteria (Logistics) ... New table in format version 2.5

Source: TecDoc

Contents: Descriptions in different languages
Length: 79
Sorting: TermNo, LangNo
Primary Key: TermNo ,LangNo

Name	Old name	Pos	Length	Type	Description
BrandNo	<i>DLNr</i>	000	4	N	Data Supplier Number Constant and 9999 for reference data
TableNo	<i>SA</i>	004	3	N	Data Table Constant = 031
TermNo	<i>BezNr</i>	007	9	N	Description Number
LangNo	<i>SprachNr</i>	016	3	N	Language Number (-> 020)
Term	<i>Bez</i>	019	60	U	Descriptions

Notes: Text such as article additional descriptions are not saved with the article but are registered in a separate language table for reasons of international compatibility. Access to the relevant text is facilitated by means of a description number and the relevant language number.

Data suppliers can create their own language-specific texts apart from the data table of description texts provided by TECDOC. The first 100000 numbers are reserved for TECDOC descriptions.

A description number should not be repeated within one language.

Version 2.5 annotation:

This is not a 1:1 copy of table 30 as those parts of table 30 are removed that are not used anymore (reserved characters at the beginning, DeleteFlag)

053 Criteria Table (Logistics) ... New table in format version 2.5

Source: TecDoc

Contents: Description of all criteria
 Length: 59
 Sorting: BrandNo, CritNo
 Primary Key: BrandNo, CritNo

Name	Old name	Pos	Length	Type	Description
BrandNo	<i>DLNr</i>	000	4	N	Data Supplier Number Constant = 9999
TableNo	<i>SA</i>	004	3	N	Data Table Constant= 053
CritNo	<i>KritNr</i>	007	4	N	Criterion Number
TermNo	<i>BezNr</i>	011	9	N	Description Number (-> 031)
Type	<i>Typ</i>	020	1	C	Criterion Type ('A' = Alphanumeric, 'N' = Numerical, 'D' = Date 'K' = Key, 'V' = without value)
MaxLen	<i>MaxLen</i>	021	2	(N)	Maximum length of criterion value
OKArtikel	<i>OK-Artikel</i>	023	1	N	Criterion may be used for article (SA 213) (0 = No, 1 = Yes) --- const = 1
TabNo	<i>TabNr</i>	024	3	(N)	Number of the Key Table for type 'K'
OKCV	<i>OK-NKW</i>	027	1	N	const = 0
OKPC	<i>OK-PKW</i>	028	1	N	const = 0
OKEngine	<i>OK-Motor</i>	029	1	N	const = 0
OKDrivCab	<i>OK-Fahrerhaus</i>	030	1	N	const = 0
PartLstCrit	<i>Stücklisten-Criterion</i>	031	1	N	const = 0
AccCrit	<i>Zubehör-Criterion</i>	032	1	N	const = 0
Multiple	<i>Mehrfach-verwendung</i>	033	1	N	Criterion may be used more than once within a criteria (0 = No, 1 = Yes)



TermNoAbbr	BezNrAbk	034	9	(N)	Description number for the abbreviation (->031)
TermNoUnit	BezNrEinheit	043	9	(N)	BezNr for the unit (->031)
IntervalCrit	IntervallCriterion	052	1	N	Criterion is an interval criterion (0 = No, 1 = Yes)
SuccCrit	Nachfolge-Criterion	053	4	(N)	Criterion is successor to...
Delete	Delete	057	1	N	1: Criterion is proposed for deletion, otherwise 0
CritUsage	n/a	058	1	N	Logistic criterion may be used: (new in Format Version 2.6) 0: For end user unit (table 213) 1: For packaging items (table 214) (*) 2: For end user and packaging items (*)

Notes: Any Data Supplier may request TecDoc to create new criteria needed for their articles/linkages. Such new criteria then also become available to all the other Data Suppliers.

Criteria of type 'D' (date) must be given in the format 'yyyymm' (four-digit year, two-digit month, e.g. 202110 for October 2021)

(*) This is for future use if more criteria on packaging level items will be needed as given in table. With start of 2.6 this is const=0

Validation rules on numeric criteria (type = 'N'):

1. Characters "0" to "9", comma ",", as well as plus "+" and minus "-" are permitted
2. A comma may not be used at the beginning or end of the value
3. A comma may only be used once within a value
4. Only the comma may be used as the decimal separator
5. Thousands separators must not be used
6. Exactly one "+" or exactly one "-" may only be used at the beginning of a numeric value
7. Spaces must not be used

All(!) characters are part of the maximum length of an attribute.

Version 2.5 annotation:

In version 2.5 only article criteria are added. As this may be extended to linkage criteria in the future the "OK-xxx" field remain part of the table.



334 Generic Articles requiring a Safety data Sheet ... New table in format version 2.6

Definition

for certain products the provision of a safety data sheet is mandatory or strongly recommended. Safety data Sheets can already be distributed as digital assets (documents)= using tables 213 and 232 and indicating the document to be a Safety Data Sheet (231.DocTermNorm = 6).

To improve the quality of data and support the industry during data maintenance process this table includes those Generic Articles where the delivery of a safety data Sheet is at least strongly recommended.

Source: TecDoc

Contents: Generic Articles requiring a safety data sheet
Length: 39
Sorting: GenArtNo
Primary Key: GenArtNo

Name	Old name	Pos	Length	Type	Description
BrandNo	n/a	000	4	N	Data Supplier Number Constant = 9999
TableNo	n/a	004	3	N	Data Table Constant= 334
Reserved	n/a	007	27	n/a	For future uses – filled with blank characters
GenArtNo	n/a	034	5	N	Unambiguous number of the generic article (->320)



Manufacturers and Model Series

100 Manufacturer

Source: TecDoc

Contents: Description of all manufacturers
 Length: 40
 Sorting: ManNo
 Primary Key: ManNo

Name	Old name	Pos	Length	Type	Description
BrandNo	<i>DLNr</i>	000	4	N	Data Supplier Number Constant = 9999
TableNo	<i>SA</i>	004	3	N	Data Table Constant = 100
ManNo	<i>HerNr</i>	007	6	N	Manufacturer Number
ManCode	<i>HKZ</i>	013	10	U	Manufacturer Short Code
CTermNo	<i>LBezNr</i>	023	9	N	Description Number (->012)
PC	<i>PKW</i>	032	1	N	PC Manufacturer (0 = No, 1 = Yes)
CV	<i>NKW</i>	033	1	N	CV Manufacturer (0 = No, 1 = Yes)
Compare	<i>VGL</i>	034	1	N	Comparative Manufacturer (0 = No, 1 = Yes)
Axle	<i>Achse</i>	035	1	N	Axle Manufacturer (0 = No, 1 = Yes)
Engine	<i>Motor</i>	036	1	N	Engine Manufacturer (0 = No, 1 = Yes)
Transmission	<i>Getriebe</i>	037	1	N	Transmission Manufacturer (0 = No, 1 = Yes)
LCV	<i>Transporter</i>	038	1	N	LCV manufacturer (0 = no, 1 = yes)
Delete	<i>Delete</i>	039	1	N	1: Manufacturer is proposed for deletion, otherwise 0



103 Manufacturer-KBA Reference

Source: TecDoc

Contents: Allocation of KBA code to manufacturer
Length: 39
Sorting: KBANo, ManNo
Primary Key: KBANo, ManNo

Name	Old name	Pos	Length	Type	Description
Reserved	<i>Reserviert</i>	000	22	C	Constantly blank
BrandNo	<i>DLNr</i>	022	4	N	Data Supplier Number Constant = 9999
TableNo	<i>SA</i>	026	3	N	Data Table Constant = 103
KBANo	<i>KBANr</i>	029	4	N	KBA Manufacturer Code
ManNo	<i>HerNr</i>	033	6	N	Manufacturer Number



110 Vehicle Model Series

Source: TecDoc

Contents: Description of all vehicle model series
 Length: 47
 Sorting: KModNo
 Primary Key: KModNo

Name	Old name	Pos	Length	Type	Description
BrandNo	<i>DLNr</i>	000	4	N	Data Supplier Number Constant = 9999
TableNo	<i>SA</i>	004	3	N	Data Table Constant= 110
KModNo	<i>KModNr</i>	007	5	N	Unambiguous number of the vehicle model series
CTermNo	<i>LBezNr</i>	012	9	N	Description Number (-> 012)
ManNo	<i>HerNr</i>	021	6	N	Manufacturer (-> 100)
SortNo	<i>SortNr</i>	027	3	N	Sorting key for the sorting within one manufacturer (ManNo)
ModYFrom	<i>Bjvon</i>	030	6	(N)	Model year from YYYYMM – Production Date
ModYTo	<i>BJBis</i>	036	6	(N)	Model year to YYYYMM – Production Date
PC	<i>PKW</i>	042	1	N	PC model series = '1'
CV	<i>NKW</i>	043	1	N	CV model series = '1'
Axle	<i>Achse</i>	044	1	N	Axel model series = '1'
Delete	<i>Delete</i>	045	1	N	1: Model series is proposed for deletion, otherwise 0
LCV	<i>Transporter</i>	046	1	N	LCV model series

Note: PC/CV/Axle: One of these fields must contain the value =1

115 Linkage Target Types – Mappings

Source: TecDoc

Content: Mapping from kTyp/nTyp to more detailed vehicle classes
 Length: 25
 Sorting: LinkageTargetNo, LT_Type_Original
 Primary Key: LinkageTargetNo, LT_Type_Original

Name	Pos	Length	Type	Description
BrandNo	000	4	N	Data Supplier No. constant = 9999
TableNo	004	3	N	Data Table constant = 115
LinkageTargetNo	007	9	N	Unique number of vehicle type (kTyp or nTyp)
LinkageTargetTable	016	3	N	Table where LinkageTargetNo is located (120 or 532)
LTTypeOriginal	019	3	N	„Classic“ view on linkage targets 2: for table 120 records 120/kTyp 16: for table 532 records 532/nTyp
LTTypeExtended	022	3	N	Linkage Target Type (KT 271) – extended classification according to chapter „Vehicle Classes“

The entries in the *LTTypeExtended* field allow a more detailed differentiation of vehicles in the links (tables 400ff). The following link target types are possible by using the mappings of table 115

- 2 TecDoc PC
- 3 TecDoc Motorcycle
- 4 TecDoc E-PC
- 5 TecDoc E-LCV
- 6 TecDoc E-Motorcycle
- 16 TecDoc CV
- 17 TecDoc Bus
- 18 TecDoc Tractor
- 20 TecDoc E-Bus
- 999 TecDoc LCV



If you as a data user want to make use of this extended option in your systems, you can replace the entry in the VKNZielArt field in the provided linkage tables (400ff) according to the mapping in table 115. To do this, proceed as follows:

- 1) Find the pair of values VKNZielNo/VKNZielArt of linkage in table 115 (VKNZielNo/VKZielArt_Original)
- 2) In the linkage (tables 400ff), replace the value in the VKNZielArt field with the value in table 115 in the VKNZielArtExtended field.

As a result, you receive link tables according to the new, more detailed system.

The breakup of the kTyp/nTyp system represents a fundamental paradigm shift, which can be accompanied by extensive consequences for interfaces and application systems. For this reason, we provide this mapping rule as an optional supplement. There is no obligation to use it.

This information is available to all recipients of data packets.



Passenger Car Information

120 Vehicle Types

Source: TecDoc

Contents: Description of all vehicle types
 Length: 107
 Sorting: KTypNo
 Primary Key: KTypNo

Name	Old name	Pos	Length	Type	Description
BrandNo	<i>DLNr</i>	000	4	N	Data Supplier Number Constant = 9999
TableNo	<i>SA</i>	004	3	N	Data Table Constant= 120
KTypNo	<i>KTypNr</i>	007	9	N	Unambiguous number of the vehicle type
CTermNo	<i>LbezNr</i>	016	9	N	Description number (-> 012)
KModNo	<i>KModNr</i>	025	5	N	Model Series (-> 110)
SortNo	<i>SortNr</i>	030	2	N	General Sorting Field
ModYFrom	<i>Bjvon</i>	032	6	(N)	Model Year from (YYYYMM) – Production Date
ModYTo	<i>Bjbis</i>	038	6	(N)	Model Year to (YYYYMM) – Production Date
KW	<i>KW</i>	044	4	(N)	Engine output in kW (*)
HP	<i>PS</i>	048	4	(N)	Engine output in HP
ccmTax	<i>ccmSteuer</i>	052	5	(N)	Engine capacity in cc (taxation value)
ccmTech	<i>ccmTech</i>	057	5	(N)	Engine capacity in cc (technical value)
Lit	<i>Lit</i>	062	4	(N)	Engine capacity in litre *100 (99V99)
Cyl	<i>Zyl</i>	066	2	(N)	Number of cylinders
Doors	<i>Tueren</i>	068	1	(N)	Number of doors
TankCap	<i>TankInhalt</i>	069	4	(N)	Fuel tank capacity
Voltage	<i>Spannung</i>	073	2	(N)	Main current voltage
ABS	<i>ABS</i>	075	1	(N)	0 = no, 1 = yes, 2 = optional, 9 = unknown
TCS	<i>ASR</i>	076	1	(N)	0 = no, 1 = yes, 2 = optional, 9 = unknown
EngType	<i>MotArt</i>	077	3	(N)	Engine type (KT 080)



Name	Old name	Pos	Length	Type	Description
FuelMixForm	<i>Kraftstoffaufberei- tungsprinzip</i>	080	3	(N)	Fuel mixture formation (KT 097)
DriveType	<i>AntrArt</i>	083	3	(N)	Drive type (KT 082)
BrakeType	<i>BremsArt</i>	086	3	(N)	Brake type (KT 083)
BrakeSys	<i>BremsSys</i>	089	3	(N)	Brake system (KT 084)
Valves	<i>Ventile/Brennraum</i>	092	2	(N)	Number of valves
FuelType	<i>KrStoffArt</i>	094	3	(N)	Fuel type (KT 182)
CatType	<i>KatArt</i>	097	3	(N)	Catalyst converter type (KT 089)
TransmType	<i>GetrArt</i>	100	3	(N)	Transmission type (KT 085)
BodyType	<i>AufbauArt</i>	103	3	(N)	Body type (KT 086)
Delete	<i>Delete</i>	106	1	N	1: K-TypNr series is proposed for deletion, otherwise 0

121 KBA Type Allocation

Source: TecDoc

Contents: Allocation of KBA codes to vehicle types
 Length: 129
 Sorting: KBANo, KTypNo
 Primary Key: KBANo, KTypNo

Name	Old name	Pos	Length	Type	Description
Reserved	<i>Reserviert</i>	000	22	C	Constantly blank
BrandNo	<i>DLNr</i>	022	4	N	Data Supplier Number Constant = 9999
TableNo	<i>SA</i>	026	3	N	Data Table Constant= 121
KBANo	<i>KBANr</i>	029	7	C	German KBA No. (9999999)
KTypNo	<i>KTypNr</i>	036	9	N	Vehicle type number (-> 120)
BodyType	<i>AufbauArt</i>	045	3	(N)	Body type (KT 086)
ABENo	<i>ABENr</i>	048	25	(C)	General Approval Number
ABEfrom	<i>ABEvon</i>	073	6	(N)	ABE Month (YYYYMM)
StatMan	<i>StatHer</i>	079	25	(C)	Stat. Manufacturer Description
StatType	<i>StatTyp</i>	104	25	(C)	Stat. Type Description



122 Vehicle Country Restriction

Source: TecDoc

Contents: Inclusion/Exclusion of certain countries for a vehicle
Length: 42
Sorting: KTypNo, CountryCode
Primary Key: KTypNo, CountryCode

Name	Old name	Pos	Length	Type	Description
Reserved	<i>Reserviert</i>	000	22	C	Constantly blank
BrandNo	<i>DLNr</i>	022	4	N	Data Supplier Number Constant = 9999
TableNo	<i>SA</i>	026	3	N	Data Table Constant =122
KTypNo	<i>KTypNr</i>	029	9	N	Unambiguous number of the vehicle type
CountryCode	<i>LKZ</i>	038	3	C	Country Code (-> 010)
Exclude	<i>Exclude</i>	041	1	N	'1' = Country Code is an exclusion, '0' = Country Code is an inclusion.

123 Allocation of Type Mine Numbers to Vehicle Types

Source: TecDoc

Contents: Allocation of Type Mine numbers to vehicle types
Length: 31
Sorting: TypMine, KTypNo
Primary Key: TypMine, KTypNo

Name	Old name	Pos	Length	Type	Description
BrandNo	<i>DLNr</i>	000	4	N	Data Supplier Number Constant = 9999
TableNo	<i>SA</i>	004	3	N	Data Table Constant= 123
TypMine	<i>TypMine</i>	007	15	C	French Type Mine Number
KTypNo	<i>KTypNr</i>	022	9	N	Vehicle type number (-> 120)

124 Vehicle Country Specifications

Source: TecDoc

Contents: Description of all country specific deviations of vehicle types
 Length: 88
 Sorting: KTypNo, CountryCode
 Primary Key: KTypNo, CountryCode

Name	Old name	Pos	Length	Type	Description
Reserved	<i>Reserved</i>	000	22	C	Constantly blank
BrandNo	<i>DLNr</i>	022	4	N	Data Supplier Number Constant = 9999
TableNo	<i>SA</i>	026	3	N	Data Table Constant= 124
KTypNo	<i>KTypNr</i>	029	9	N	Unambiguous number of the vehicle type
CountryCode	<i>LKZ</i>	038	3	C	Country Code (-> 010)
ModYFrom	<i>Bjvon</i>	041	6	(N)	Model year from (YYYYMM) – Production Date
ModYTo	<i>Bjbis</i>	047	6	(N)	Model year to (YYYYMM) – Production Date
ccmTax	<i>ccmSteuer</i>	053	5	(N)	Engine capacity in cc (taxation value)
Lit	<i>Lit</i>	058	4	(N)	Engine capacity in litre (99,99)
Cyl	<i>Zyl</i>	062	2	(N)	Number of cylinders
Doors	<i>Tueren</i>	064	1	(N)	Number of doors
TankCap	<i>TankInhalt</i>	065	4	(N)	Fuel tank capacity
Voltage	<i>Spannung</i>	069	2	(N)	Main current voltage
ABS	<i>ABS</i>	071	1	(N)	0 = no, 1 = yes, 2 = optional, 9 = unknown
TCS	<i>ASR</i>	072	1	(N)	0 = no, 1 = yes, 2 = optional, 9 = unknown
FuelType	<i>KrStoffArt</i>	073	3	(N)	Fuel type (KT 182)
CatType	<i>KatArt</i>	076	3	(N)	Catalyst converter type (KT 089)
TransmType	<i>GetrArt</i>	079	3	(N)	Transmission type (KT 085)
BrakeType	<i>BremsArt</i>	082	3	(N)	Brake type (KT 083)
BrakeSys	<i>BremsSys</i>	085	3	(N)	Brake system (KT 084)



126 Swiss Type Number Allocation to Vehicle Types

Source: TecDoc

Contents: Allocation of Swiss type numbers to vehicle types
Length: 23
Sorting: ChTyp, KTypNo
Primary Key: ChTyp, KTypNo

Name	Old name	Pos	Length	Type	Description
BrandNo	<i>DLNr</i>	000	4	N	Data Supplier Number Constant = 9999
TableNo	SA	004	3	N	Data Table Constant= 126
ChTyp	<i>ChTyp</i>	007	7	C	Swiss Type Number
KTypNo	<i>KTypNr</i>	014	9	N	Vehicle Type Number (-> 120)

127 Netherlands Number Plate to Vehicle Type Allocation

Source: TecDoc

Contents: Allocation of Netherlands number plates to vehicle types
Length: 22
Sorting: NLTyp, KTypNo
Primary Key: NLTyp, KTypNo

Name	Old name	Pos	Length	Type	Description
BrandNo	<i>DLNr</i>	000	4	N	Data Supplier Number Constant = 9999
TableNo	<i>SA</i>	004	3	N	Data Table Constant = 127
NLTyp	<i>NLTyp</i>	007	6	C	Netherlands Number Plate
KTypNo	<i>KTypNr</i>	013	9	N	Vehicle type number (-> 120)

128 Allocation of Swedish Number Plates to Vehicle Types

Source: TecDoc

Contents: Allocation of Swedish number plates to vehicle types
Length: 22
Sorting: STyp, KTypNo
Primary Key: STyp, KTypNo

Name	Old name	Pos	Length	Type	Description
BrandNo	<i>DLNr</i>	000	4	N	Data Supplier Number Constant = 9999
tableNo	<i>SA</i>	004	3	N	Data Table Constant= 128
STyp	<i>STyp</i>	007	6	C	Swedish Number Plate
KTypNo	<i>KTypNr</i>	013	9	N	Vehicle type number (-> 120)



129 Austrian NatCodes

Source: TecDoc

Contents: Allocation of Austrian NatCodes to vehicle types
Length: 22
Sorting: NatCode, KTypNo
Primary Key: NatCode, KTypNo

Name	Old name	Pos	Length	Type	Description
BrandNo	<i>DLNr</i>	000	4	N	Data Supplier Number Constant = 9999
TableNo	<i>SA</i>	004	3	N	Data Table Constant= 129
STyp	<i>STyp</i>	007	6	C	Austrian NatCode
KTypNo	<i>KTypNr</i>	013	9	N	Vehicle type number (-> 120)

140 Additional Descriptions to Vehicle Model Series

Source: TecDoc

Contents: Additional information on all vehicle model series
Length: 30
Sorting: KModNo
Primary Key: KModNo

Name	Old name	Pos	Length	Type	Description
BrandNo	<i>DLNr</i>	000	4	N	Data Supplier Number Constant = 9999
TableNo	<i>SA</i>	004	3	N	Data Table Constant= 140
KModNo	<i>KModNr</i>	007	5	N	Unambiguous number of the vehicle model series
CTermNo1	<i>LbezNr1</i>	012	9	N	Description Number (->012) of the sales description
CTermNo2	<i>LbezNr2</i>	021	9	N	Description Number (->012) of the model generation

Notes on LbezNr1 and LbezNr2: One of the fields is always filled. When only one field is filled, the other one contains '000000000'.

143 Allocation of Model Types to Model Series

Source: TecDoc

Contents: Allocation of model types to model series
Length: 30
Sorting: KmodNo, CountryCode, SortNo
Primary Key: KmodNo, CountryCode, ModelType

Name	Old name	Pos	Length	Type	Description
BrandNo	<i>DLNr</i>	000	4	N	Data Supplier Number Constant = 9999
TableNo	<i>SA</i>	004	3	N	Data Table Constant= 143
KmodNo	<i>KmodNr</i>	007	5	N	Unambiguous number of the vehicle model series
CountryCode	<i>CountryCode</i>	012	3	(C)	Country Code (-> 010)
SortNo	<i>SortNr</i>	015	4	N	Display sequence of the sample within one (Model Series, CountryCode) – Group
ModelType	<i>Muster</i>	019	10	C	Sample

144 Additional Vehicle Type Descriptions

Source: TecDoc

Contents: Additional information on all vehicle types
Length: 56
Sorting: KTypNo
Primary Key: KTypNo

Name	Old name	Pos	Length	Type	Description
Reserved	<i>Reserviert</i>	000	22	C	Constantly blank
BrandNo	<i>DLNr</i>	022	4	N	Data Supplier Number Constant = 9999
TableNo	<i>SA</i>	026	3	N	Data Table Constant = 144
KTypNo	<i>KTypNr</i>	029	9	N	Unambiguous number of the vehicle type
CTermNo1	<i>LbezNr1</i>	038	9	N	Description Number (->012) of the type description
CTermNo2	<i>LbezNr2</i>	047	9	N	Description Number (->012) of the Note

Note on CTermNo1 and CTermNo2: One of the fields is always filled. When only one field is filled, the other contains '000000000'.



145 Model Type

Source: TecDoc

Contents: Allocation of model types to vehicle types
Length: 55
Sorting: KTypNo, CountryCode, SortNo
Primary Key: KTypNo, CountryCode, ModelType

Name	Old name	Pos	Length	Type	Description
Reserved	<i>Reserviert</i>	000	22	C	Constantly blank
BrandNo	<i>DLNr</i>	022	4	N	Data Supplier Number Constant = 9999
TableNo	<i>SA</i>	026	3	N	Data Table Constant= 145
KTypNo	<i>KTypNr</i>	029	9	N	Unambiguous number of the vehicle type
CountryCode	<i>CountryCode</i>	038	3	(C)	Country code (-> 010)
SortNo	<i>SortNr</i>	041	4	N	Display sequence of the sample within one (Model Series, CountryCode) – Group
ModelType	<i>Muster</i>	045	10	C	Model Type



146 Body Type Synonyms

Source: TecDoc

Contents: Body Type Synonyms
Length: 24
Sorting: BodyType, KModNo
Primary Key: BodyType, KModNo

Name	Old name	Pos	Length	Type	Description
BrandNo	<i>DLNr</i>	000	4	N	Data Supplier Number Constant = 9999
TableNo	<i>SA</i>	004	3	N	Data Table Constant= 146
BodyType	<i>AufbauArt</i>	007	3	N	Body Type (KT 086)
KModNo	<i>KmodNr</i>	010	5	N	Unambiguous number of the vehicle model series
CTermNo	<i>LbezNr</i>	015	9	N	Description Number (->012) of the synonym



147 Drive Type Synonyms

Source: TecDoc

Contents: Drive Type Synonyms
Length: 50
Sorting: DriveType, KTypNo
Primary Key: DriveType, KTypNo

Name	Old name	Pos	Length	Type	Description
Reserved	<i>Reserviert</i>	000	22	C	Constantly blank
BrandNo	<i>DLNr</i>	022	4	N	Data Supplier Number Constant = 9999
TableNo	<i>SA</i>	026	3	N	Data Table Constant = 147
DriveType	<i>AntrArt</i>	029	3	N	Drive Type (082)
KTypNo	<i>KTypNr</i>	032	9	N	Unambiguous number of the vehicle type
CTermNo	<i>LbezNr</i>	041	9	N	Description Number (->012) of the synonym



Commercial Vehicle Information



532 CV Types

Source: TecDoc

Contents: Description of all CV primary types
 Length: 104
 Sorting: NTypNo
 Primary Key: NTypNo

Name	Old name	Pos	Length	Type	Description
Reserved	<i>Reserviert</i>	000	22	C	Constantly blank
BrandNo	<i>DLNr</i>	022	4	N	Data Supplier Number Constant = 9999
TableNo	<i>SA</i>	026	3	N	Data Table Constant= 532
NTypNo	<i>NTypNr</i>	029	9	N	Unambiguous number of the CV primary types
KModNo	<i>KModNr</i>	038	5	N	Model Series CV (-> 110)
SortNo	<i>Sort</i>	043	4	N	Sorting within one model series
CTermNo	<i>LbezNr</i>	047	9	N	Description of the CV type (-> SA 012)
ModYFrom	<i>BJvon</i>	056	6	(N)	Model Year from (YYYYMM) – Production Date
ModYTo	<i>JBbis</i>	062	6	(N)	Model Year to (YYYYMM) – Production Date
BodyType	<i>Bauart</i>	068	3	N	Body Type (KT 067)
EngType	<i>Motart</i>	071	3	N	Engine Type (KT 080)
KWFrom	<i>KWvon</i>	074	4	N	Engine output from in kW
KWTo	<i>KWbis</i>	078	4	(N)	Engine output to in kW
HPFrom	<i>PSvon</i>	082	4	N	Engine output from in HP
HPTo	<i>PSbis</i>	086	4	(N)	Engine output to in HP
CcmTech	<i>CcmTech</i>	090	5	N	Engine capacity in cc (technical)
Tonnage	<i>Tonnage</i>	095	5	N	Tonnage in tonnes with 2 decimal spaces (999V99)
AxleConfig	<i>Achsconfig</i>	100	3	(N)	Axle Configuration (KT 065)
Delete	<i>Delete</i>	103	1	N	1: Criterion is proposed for deletion, otherwise 0



533 CV Types Country Restrictions

Source: TecDoc

Contents: Inclusion of certain countries for a CV type
Length: 42
Sorting: NTypNo, CountryCode
Primary Key: NTypNo, CountryCode

Name	Old name	Pos	Length	Type	Description
Reserved	<i>Reserved</i>	000	22	C	Constantly blank
BrandNo	<i>DLNr</i>	022	4	N	Data Supplier Number Constant = 9999
tableNo	<i>SA</i>	026	3	N	Data Table Constant =533
NTypNo	<i>NTypNr</i>	029	9	N	Unambiguous number of the CV primary type (->532)
CountryCode	<i>LKZ</i>	038	3	C	Country Code (-> 010)
Exclude	<i>Exclude</i>	041	1	N	'1' = Country Code is an exclusion, '0' = Country Code is an inclusion.



534 CV Country Specific Deviations

Source: TecDoc

Contents: Description of all country-specific deviations of CV types
 Length: 53
 Sorting: NTypNo, CountryCode
 Primary Key: NTypNo, CountryCode

Name	Old name	Pos	Length	Type	Description
Reserved	<i>Reserviert</i>	000	22	C	Constantly blank
BrandNo	<i>DLNr</i>	022	4	N	Data Supplier Number Constant = 9999
TableNo	<i>SA</i>	026	3	N	Data Table Constant= 534
NTypNo	<i>NTypNr</i>	029	9	N	Unambiguous number of the CV primary types(->532)
CountryCode	<i>LKZ</i>	038	3	C	Country Code (-> 010)
ModYFrom	<i>BJvon</i>	041	6	(N)	Model Year from (YYYYMM) – Production Date
ModYTo	<i>BJbis</i>	047	6	(N)	Model Year to (YYYYMM) – Production Date

535 CV Secondary Types

Source: TecDoc

Contents: Description of all CV secondary types
 Length: 117
 Sorting: NTypNo, NTypSubNo
 Primary Key: NTypNo, NTypSubNo

Name	Old name	Pos	Length	Type	Description
Reserved	<i>Reserviert</i>	000	22	C	Constantly blank
BrandNo	<i>DLNr</i>	022	4	N	Data Supplier Number Constant = 9999
TableNo	<i>SA</i>	026	3	N	Data Table Constant= 535
NTypNo	<i>NTypNr</i>	029	9	N	Unambiguous number of the CV primary types (>532)
NTypSubNo	<i>NTypSubNr</i>	038	3	N	Unambiguous number of the secondary type within a primary type
SortNo	<i>SortNr</i>	041	3	N	Sorting within the primary type
Term	<i>Bez</i>	044	60	(C)	Description of the CV secondary type
ModYFrom	<i>BJvon</i>	104	6	(N)	Model Year from (YYYYMM) – Production Date
ModYTo	<i>BJbis</i>	110	6	(N)	Model Year to (YYYYMM) – Production Date



536 CV Secondary Types Country Restrictions

Source: TecDoc

Contents: Inclusion of certain countries for CV secondary types
 Length: 45
 Sorting: NTypNo, NTypSubNo, CountryCode
 Primary Key: NTypNo, NTypSubNo, CountryCode

Name	Old name	Pos	Length	Type	Description
Reserved	<i>Reserved</i>	000	22	C	Constantly blank
BrandNo	<i>DLNr</i>	022	4	N	Data Supplier Number Constant = 9999
TableNo	<i>SA</i>	026	3	N	Data Table Constant =536
NTypNo	<i>NTypNr</i>	029	9	N	Unambiguous number of the CV primary type (->532)
NTypSubNo	<i>NTypSubNr</i>	038	3	N	Unambiguous number of the secondary type within a primary type (->535)
CountryCode	<i>LKZ</i>	041	3	C	Country Code (-> 010)
Exclude	<i>Exclude</i>	044	1	N	'1' = Country Code is an exclusion, '0' = Country Code is an inclusion.



538 Allocation of CV to CV ID Numbers

Source: TecDoc

Contents: The allocation of CV primary and secondary types to manufacturer ID numbers

Length: 47

Sorting: NTypNo, NTypSubNo, ManIDNo

Primary Key: NTypNo, NTypSubNo, ManIDNo

Name	Old name	Pos	Length	Type	Description
Reserved	<i>Reserviert</i>	000	22	C	Constantly blank
BrandNo	<i>DLNr</i>	022	4	N	Data Supplier Number Constant = 9999
TableNo	<i>SA</i>	026	3	N	Data Table Constant =538
NTypNo	<i>NTypNr</i>	029	9	N	Unambiguous number of the CV primary type (->532)
NTypSubNo	<i>NTypSubNr</i>	038	3	N	Unambiguous number of the secondary type within a primary type (->535)
ManIDNo	<i>HerIDNr</i>	041	5	N	Manufacturer ID Number (-> 554)



539 Country Restrictions for the Allocation of CV to ID Numbers

Source: TecDoc

Contents: Inclusion of certain countries for the allocation of CV primary and secondary types to manufacturer ID numbers

Length: 50

Sorting: NTypNo, NTypSubNo, ManIDNo, CountryCode

Primary Key: NTypNo, NTypSubNo, ManIDNo, CountryCode

Name	Old name	Pos	Length	Type	Description
Reserved	<i>Reserviert</i>	000	22	C	Constantly blank
BrandNo	<i>DLNr</i>	022	4	N	Data Supplier Number Constant = 9999
TableNo	<i>SA</i>	026	3	N	Data Table Constant =539
NTypNo	<i>NTypNr</i>	029	9	N	Unambiguous number of the CV primary type (->532)
NTypSubNo	<i>NTypSubNr</i>	038	3	N	Unambiguous number of the secondary type within a primary type (->535)
ManIDNo	<i>HerIDNr</i>	041	5	N	Manufacturer ID Number (-> 554)
CountryCode	<i>LKZ</i>	046	3	C	Country Code (-> 010)
Exclude	<i>Exclude</i>	049	1	N	'1' = Country Code is an exclusion, '0' = Country Code is an inclusion.



540 CV Types Voltages

Source: TecDoc

Contents: Allocation of different voltages for CV primary and secondary types and to manufacturer ID numbers.

Max. Length: 49

Sorting: NTypNo, NTypSubNo, SeqNo

Primary Key: NTypNo, NTypSubNo, SeqNo

Name	Old name	Pos	Length	Type	Description
Reserved	<i>Reserviert</i>	000	22	C	Constantly blank
BrandNo	<i>DLNr</i>	022	4	N	Data Supplier Number Constant = 9999
TableNo	<i>SA</i>	026	3	N	Data Table Constant =540
NTypNo	<i>NTypNr</i>	029	9	N	Unambiguous number of the CV primary type (->532)
NTypSubNo	<i>NTypSubNr</i>	038	3	N	Unambiguous number of the secondary types within a primary type (->535)
SeqNo	<i>LfdNr</i>	041	2	N	Sequential number within a NTypNo-NTypSubNo combination.
Volt	<i>Volt</i>	043	2	N	Main Current Voltage
CountryCode	<i>LKZ</i>	045	3	(C)	Country Code (-> 010)
Exclude	<i>Exclude</i>	048	1	(N)	'1' = Country Code is an exclusion, '0' = Country Code is an inclusion.



541 CV Driver Cabs

Source: TecDoc

Contents: Description of all CV driver cabs
 Length: 120
 Sorting: DrivCabNo
 Primary Key: DrivCabNo

Name	Old name	Pos	Length	Type	Description
BrandNo	<i>DLNr</i>	000	4	N	Data Supplier Number Constant = 9999
TableNo	<i>SA</i>	004	3	N	Data Table Constant =541
DrivCabNo	<i>FHausNr</i>	007	5	N	Unambiguous number of the driver cab
ManNo	<i>HerNr</i>	012	6	N	Unambiguous number of the driver cab manufacturer (->100)
KModNo	<i>KModNr</i>	018	5	N	Unambiguous number of the CV model series to which the driver cab is allocated (->110)
CabDesign	<i>Baumuster</i>	023	30	(C)	Cab Design
CTermNo	<i>LBezNr</i>	053	9	N	Description number (-> 012) for the sales description
Reserved	<i>Reserved</i>	062	21	C	Constantly Blank
Size	<i>Size</i>	083	3	(N)	Driver Cab Size (-> KT 69)
ModYFrom	<i>BJvon</i>	086	6	(N)	Model Year from (YYYYMM) – Production Date
ModYTo	<i>JBis</i>	092	6	(N)	Model Year to (YYYYMM) – Production Date
Length	<i>Length</i>	098	7	(N)	Driver cab length in mm
Height	<i>Height</i>	105	7	(N)	Driver cab height in mm
Width	<i>Width</i>	112	7	(N)	Driver cab width in mm
Delete	<i>Delete</i>	119	1	N	1: Criterion is proposed for deletion, otherwise 0



542 CV Driver Cab Country Restrictions

Source: TecDoc

Contents: Inclusion of certain countries for a CV driver cab
Length: 38
Sorting: DrivCabNo, CountryCode
Primary Key: DrivCabNo, CountryCode

Name	Old name	Pos	Length	Type	Description
Reserved	<i>Reserviert</i>	000	22	C	Constantly blank
BrandNo	<i>DLNr</i>	022	4	N	Data Supplier Number Constant = 9999
TableNo	<i>SA</i>	026	3	N	Data Table Constant =524
DrivCabNo	<i>FHausNr</i>	029	5	N	Unambiguous number of the driver cab (->541)
CountryCode	<i>LKZ</i>	034	3	C	Country Code (-> 010)
Exclude	<i>Exclude</i>	037	1	N	'1' = Country Code is an exclusion, '0' = Country Code is an inclusion.



543 Allocation of Driver Cabs to CVs

Source: TecDoc

Contents: The allocation of driver cabs to CV primary and secondary types
 Max. Length: 64
 Sorting: NTypNo, NTypSubNo, SeqNo
 Primary Key: NTypNo, NTypSubNo, SeqNo

Name	Old name	Pos	Length	Type	Description
Reserved	<i>Reserviert</i>	000	22	C	Constantly blank
BrandNo	<i>DLNr</i>	022	4	N	Data Supplier Number Constant = 9999
TableNo	<i>SA</i>	026	3	N	Data Table Constant =543
NTypNo	<i>NTypNr</i>	029	9	N	Unambiguous number of the CV primary type (->532)
NTypSubNo	<i>NTypSubNr</i>	038	3	N	Unambiguous number of the secondary type within a primary type (->535)
SeqNo	<i>LfdNr</i>	041	2	N	Sequential number within a NTypNo-NTypSubNo combination.
DrivCabNo	<i>FHausNr</i>	043	5	N	Unambiguous number of the driver cab (->541)
ModYFrom	<i>Bjvon</i>	048	6	(N)	Model Year from (YYYYMM) – Production Date
ModYTo	<i>Bjbis</i>	054	6	(N)	Model Year to (YYYYMM) – Production Date
CountryCode	<i>LKZ</i>	060	3	(C)	Country Code (-> 010)
Exclude	<i>Exclude</i>	063	1	(N)	'1' = Country Code is an exclusion, '0' = Country Code is an inclusion.



544 Transmission

Source: TecDoc

Contents: Description of all transmissions
 Length: 90
 Sorting: TransmNo
 Primary Key: TransmNo

Name	Old name	Pos	Length	Type	Description
BrandNo	<i>DLNr</i>	000	4	N	Data Supplier Number Constant = 9999
TableNo	<i>SA</i>	004	3	N	Data Table Constant =544
TransmNo	<i>GetrNr</i>	007	5	N	Unambiguous number of the transmission
ManNo	<i>HerNr</i>	012	6	N	Unambiguous number of the transmission manufacturer (->100)
Code	<i>Code</i>	018	30	C	Transmission Code
TransmType	<i>GetrArt</i>	048	3	(N)	Transmission Type (KT 85)
ModYFrom	<i>Bjvon</i>	051	6	(N)	Model Year from (YYYYMM) – Production Date
ModYTo	<i>Bjbis</i>	057	6	(N)	Model Year to (YYYYMM) – Production Date
TrMin	<i>Trmin</i>	063	5	(N)	Transmission Ratio Minimum
TrMax	<i>Trmax</i>	068	5	(N)	Transmission Ratio Maximum
TrInv	<i>Trinv</i>	073	5	(N)	Transmission Ratio Reverse
TransmID	<i>ID</i>	078	10	(C)	Transmission ID
Speeds	<i>Gaenge</i>	088	2	(N)	Number of gearbox speeds



545 Transmission Country Restrictions

Source: TecDoc

Contents: Inclusion of certain countries for a transmission
Length: 38
Sorting: TransmNo, CountryCode
Primary Key: TransmNo, CountryCode

Name	Old name	Pos	Length	Type	Description
Reserved	<i>Reserviert</i>	000	22	C	Constantly blank
BrandNo	<i>DLNr</i>	022	4	N	Data Supplier Number Constant = 9999
TableNo	<i>SA</i>	026	3	N	Data Table Constant =545
TransmNo	<i>GetrNr</i>	029	5	N	Unambiguous number of the transmission (->544)
CountryCode	<i>LKZ</i>	034	3	C	Country Code (-> 010)
Exclude	<i>Exclude</i>	037	1	N	'1' = Country Code is an exclusion, '0' = Country Code is an inclusion.



546 Allocation of a Transmission to a CV

Source: TecDoc

Contents: The allocation of transmissions to CV primary and secondary types
 Max. Length: 64
 Sorting: NTypNo, NTypSubNo, SeqNo
 Primary Key: NTypNo, NTypSubNo, SeqNo

Name	Old name	Pos	Length	Type	Description
Reserved	<i>Reserviert</i>	000	22	C	Constantly blank
BrandNo	<i>DLNr</i>	022	4	N	Data Supplier Number Constant = 9999
TableNo	<i>SA</i>	026	3	N	Data Table Constant =546
NTypNo	<i>NTypNr</i>	029	9	N	Unambiguous number of the CV primary type (->532)
NTypSubNo	<i>NTypSubNr</i>	038	3	N	Unambiguous number of the secondary type within a primary type (->535)
SeqNo	<i>LfdNr</i>	041	2	N	Sequential number within a NTypNr-NTypSubNr combination.
TransmNo	<i>GetrNr</i>	043	5	N	Unambiguous number of the transmission (->544)
ModYFrom	<i>Bjvon</i>	048	6	(N)	Model Year from (YYYYMM) – Production Date
ModYTo	<i>Bjbis</i>	054	6	(N)	Model Year to (YYYYMM) – Production Date
CountryCode	<i>LKZ</i>	060	3	(C)	Country Code (-> 010)
Exclude	<i>Exclude</i>	063	1	(N)	'1' = Country Code is an exclusion, '0' = Country Code is an inclusion.



550 CV Wheelbase

Source: TecDoc

Contents: Allocation of wheelbase information to CV primary and secondary types
 Max. Length: 56
 Sorting: NTypNo, NTypSubNo, SeqNo
 Primary Key: NTypNo, NTypSubNo, SeqNo

Name	Old name	Pos	Length	Type	Description
Reserved	<i>Reserviert</i>	000	22	C	Constantly blank
BrandNo	<i>DLNr</i>	022	4	N	Data Supplier Number Constant = 9999
TableNo	<i>SA</i>	026	3	N	Data Table Constant =550
NTypNo	<i>NTypNr</i>	029	9	N	Unambiguous number of the CV primary type (->532)
NTypSubNo	<i>NTypSubNr</i>	038	3	N	Unambiguous number of the secondary type within a primary type (->535)
SeqNo	<i>LfdNr</i>	041	2	N	Sequential number within a NTypNr-NTypSubNr combination.
WheelBase	<i>Radstand</i>	043	6	N	Wheelbase in mm
AxlePos	<i>AchsPos</i>	049	3	N	Axle Position (KT 064)
CountryCode	<i>LKZ</i>	052	3	(C)	Country Code (-> 010)
Exclude	<i>Exclude</i>	055	1	(N)	'1' = Country Code is an exclusion, '0' = Country Code is an inclusion.



551 CV Suspension

Source: TecDoc

Contents: Allocation of suspension to CV primary and secondary types
 Max. Length: 53
 Sorting: NTypNo, NTypSubNo, SeqNo
 Primary Key: NTypNo, NTypSubNo, SeqNo

Name	Old name	Pos	Length	Type	Description
Reserved	<i>Reserviert</i>	000	22	C	Constantly blank
BrandNo	<i>DLNr</i>	022	4	N	Data Supplier Number Constant = 9999
TableNo	<i>SA</i>	026	3	N	Data Table Constant =551
NTypNo	<i>NTypNr</i>	029	9	N	Unambiguous number of the CV primary type (->532)
NTypSubNo	<i>NTypSubNr</i>	038	3	N	Unambiguous number of the Secondary types within a primary type (->535)
SeqNo	<i>LfdNr</i>	041	2	N	Sequential number within a NTypNr-NTypSubNr combination.
SuspType	<i>FederNr</i>	043	3	N	Suspension Type (KT 066)
AxlePos	<i>AchsPos</i>	046	3	N	Axle Position (KT 064)
CountryCode	<i>LKZ</i>	049	3	(C)	Country Code (-> 010)
Exclude	<i>Exclude</i>	052	1	(N)	'1' = Country Code is an exclusion, '0' = Country Code is an inclusion.



552 CV Tyres

Source: TecDoc

Contents: Allocation of tyres to CV primary and secondary types
 Max. Length: 53
 Sorting: NTypNo, NTypSubNo, SeqNo
 Primary Key: NTypNo, NTypSubNo, SeqNo

Name	Old name	Pos	Length	Type	Description
Reserved	<i>Reserviert</i>	000	22	C	Constantly blank
BrandNo	<i>DLNr</i>	022	4	N	Data Supplier Number Constant = 9999
TableNo	<i>SA</i>	026	3	N	Data Table Constant =552
NTypNo	<i>NTypNr</i>	029	9	N	Unambiguous number of the CV primary type (->532)
NTypSubNo	<i>NTypSubNr</i>	038	3	N	Unambiguous number of the secondary type within a primary type (->535)
SeqNo	<i>LfdNr</i>	041	2	N	Sequential number within a NTypNr-NTypSubNr combination.
TyreType	<i>ReifenNr</i>	043	3	N	Tyres (KT 060)
AxlePos	<i>AchsPos</i>	046	3	N	Axle Position (KT 064)
CountryCode	<i>LKZ</i>	049	3	(C)	Country Code (-> 010)
Exclude	<i>Exclude</i>	052	1	(N)	'1' = Country Code is an exclusion, '0' = Country Code is an inclusion.



553 CV Chassis

Source: TecDoc

Contents: Allocation of the chassis to CV primary and secondary types
 Max. Length: 57
 Sorting: NTypNo, NTypSubNo, SeqNo
 Primary Key: NTypNo, NTypSubNo, SeqNo

Name	Old name	Pos	Length	Type	Description
Reserved	<i>Reserviert</i>	000	22	C	Constantly blank
BrandNo	<i>DLNr</i>	022	4	N	Data Supplier Number Constant = 9999
TableNo	<i>SA</i>	026	3	N	Data Table Constant =553
NTypNo	<i>NTypNr</i>	029	9	N	Unambiguous number of the CV primary type (->532)
NTypSubNo	<i>NTypSubNr</i>	038	3	N	Unambiguous number of the secondary type within a primary type (->535)
SeqNo	<i>LfdNr</i>	041	2	N	Sequential number within a NTypNr-NTypSubNr combination.
Chassis	<i>Prefix</i>	043	10	C	Chassis
CountryCode	<i>LKZ</i>	053	3	(C)	Country Code (-> 010)
Exclude	<i>Exclude</i>	056	1	(N)	'1' = Country Code is an exclusion, '0' = Country Code is an inclusion.



554 CV Producer-IDs

Source: TecDoc

Contents: Allocation of the CV Producer-IDs
Max. Length: 39
Sorting: ManNo, ManID
Primary Key: ManIDNo

Name	Old name	Pos	Length	Type	Description
BrandNo	<i>DLNr</i>	000	4	N	Data Supplier Number Constant = 9999
TableNo	<i>SA</i>	004	3	N	Data Table Constant =554
ManIDNo	<i>HerIDNr</i>	007	5	N	Unambiguous number of the CV Producer-ID-Number
ManNo	<i>HerNr</i>	012	6	N	Number of the CV Producer (->100)
ManID	<i>HerID</i>	018	20	C	CV Producer-ID
Delete	<i>Delete</i>	038	1	N	1: CV Producer-ID is proposed for deletion, otherwise 0



555 CV Producer-Ids Country Restrictions

Source: TecDoc

Contents: Includes of specivied countrys one CV Producer-IDs
Max. Length: 16
Sorting: ManIDNo, CountryCode
Primary Key: ManIDNo, CountryCode

Name	Old name	Pos	Length	Type	Description
BrandNo	<i>DLNr</i>	000	4	N	Data Supplier Number Constant = 9999
TableNo	<i>SA</i>	004	3	N	Data Table Constant =555
ManIDNo	<i>HerIDNr</i>	007	5	N	Unambiguous number of the CV Producer-ID-Number (-> 554)
CountryCode	<i>LKZ</i>	012	3	N	Number of the CV Producer (->100)
Exclude	<i>Exclude</i>	015	1	N	'1' = Country Code is an exclusion, '0' = Country Code is an inclusion.



General Vehicle Information

180 Engine output and vehicle performance

(from Data Release DR2241)

Not all performance is the same. Especially when it comes to vehicles containing electric engines the performance figures might be based on different physical key figures.

For that reason another table is added to allocate multiple power outputs to linkage targets in general and vehicles in particular.

Source: TecDoc

Contents:	Power Output
Length:	30
Sorting:	LnkTargetType, LnkTargetNo, PowerOutputType, FuelType
Primary Key:	LnkTargetType, LnkTargetNo, PowerOutputType, FuelType

Name	Pos	Length	Type	Description
BrandNo	000	4	N	Data Supplier Number Constant = 9999
TableNo	004	3	N	Data Table Constant= 180
LnkTargetType	007	3	N	2: KTyp vehicle in table 120 16: NTyp vehicle in table 532 14: EngNo in table 155
LnkTargetNo	010	9	N	KTyp, NTyp or EngNo
PowerOutputType	019	3	C	→ KT 87
FuelType	022	3	C	→ KT 182
KW	025	5	N	Power output



Engine Information



125 Engine Number Allocation to Vehicle Types

Source: TecDoc

Contents: Allocation of engine numbers to vehicle types
 Length: 62
 Sorting: KTypNo, SeqNo
 Primary Key: KTypNo, SeqNo

Name	Old name	Pos	Length	Type	Description
Reserved	<i>Reserviert</i>	000	22	C	Constantly blank
BrandNo	<i>DLNr</i>	022	4	N	Data Supplier Number Constant = 9999
TableNo	<i>SA</i>	026	3	N	Data Table Constant = 125
KTypNo	<i>KTypNr</i>	029	9	N	Vehicle type number (-> 120)
SeqNo	<i>LfdNr</i>	038	3	N	Sequential number within the type
EngNo	<i>MotNr</i>	041	5	N	Engine number (-> 155)
ModYFrom	<i>Bjvon</i>	046	6	(N)	Model Year from (YYYYMM) – Production Date
ModYTo	<i>Bjbis</i>	052	6	(N)	Model Year to (YYYYMM) – Production Date
CountryCode	<i>LKZ</i>	058	3	(C)	Country Code (-> 010)
Exclude	<i>Exclude</i>	061	1	(N)	'1' = Country Code is an exclusion, '0' = Country Code is an inclusion.

155 Engines

Source: TecDoc

Contents: Description of all engine types
 Length: 263
 Sorting: EngNo
 Primary Key: EngNo

Name	Old name	Pos	Length	Type	Description
BrandNo	<i>DLNr</i>	000	4	N	Data Supplier Number Constant = 9999
TableNo	<i>SA</i>	004	3	N	Data Table Constant= 155
ManNo	<i>HerNr</i>	007	6	N	Engine Manufacturer Number
EngNo	<i>MotNr</i>	013	5	N	Unambiguous engine number
EngCode	<i>MCode</i>	018	60	C	Engine description
ModYFrom	<i>BJvon</i>	078	6	(N)	Model Year from (YYYYMM) – Production Date
ModYTo	<i>BJbis</i>	084	6	(N)	Model Year to (YYYYMM) – Production Date
kWFrom	<i>kWvon</i>	090	4	(N)	Engine output in kW from
kWTo	<i>kWbis</i>	094	4	(N)	Engine output in kW to
HPFrom	<i>PSvon</i>	098	4	(N)	Engine output in HP from
HPTo	<i>PSbis</i>	102	4	(N)	Engine output in HP to
Valves	<i>Ventile</i>	106	2	(N)	Number of valves
Cyl	<i>Zyl</i>	108	2	(N)	Number of cylinders
ComprFrom	<i>VerdichtV</i>	110	4	(N)	Compression * 100
ComprTo	<i>VerdichtB</i>	114	5	(N)	Compression to * 100
TorqFrom	<i>DrehmV</i>	119	4	(N)	Torque from
TorqTo	<i>DrehmB</i>	123	5	(N)	Torque to
ccTaxFrom	<i>ccmSteuerV</i>	128	5	(N)	Engine capacity in cc (taxation) from
ccTaxTo	<i>ccmSteuerB</i>	133	5	(N)	Engine capacity in cc (taxation) to
ccTechFrom	<i>ccmTechV</i>	138	5	(N)	Engine capacity in cc (technical) from
ccTechTo	<i>ccmTechB</i>	143	5	(N)	Engine capacity in cc (technical) to
litTaxFrom	<i>LitSteuerV</i>	148	4	(N)	Engine capacity in litre (taxation) from * 100
litTaxTo	<i>LitSteuerB</i>	152	4	(N)	Engine capacity in litre (taxation) to * 100
litTechFrom	<i>LitTechV</i>	156	4	(N)	Engine capacity in litre (technical) from * 100



litTechTo	<i>LitTechB</i>	160	4	(N)	Engine capacity in litre (technical) to * 100
EngUse	<i>MotVerw</i>	164	3	(N)	Engine usage (->KT 098)
EngDesign	<i>MotBauForm</i>	167	3	(N)	Engine Design (->KT 096)
FuelType	<i>KrStoffArt</i>	170	3	(N)	Fuel Type (->KT 088)
FuelMixForm	<i>KrStoffAuf</i>	173	3	(N)	Fuel Mixture Formation (->KT 097)
EngAsp	<i>MotBeatm</i>	176	3	(N)	Engine aspiration (->KT 099); charger
RPMkWFrom	<i>UminKwV</i>	179	5	(N)	RPM kW from
RPMkWTo	<i>UminKwB</i>	184	5	(N)	RPM kW to
RPMTorqFrom	<i>UminDrehmV</i>	189	5	(N)	RPM torque from
RPMTorqTo	<i>UminDrehmB</i>	194	5	(N)	RPM torque to
CrankBearQuant	<i>Kurbel</i>	199	2	(N)	Number of crankshaft bearings
Bore	<i>Bohrung</i>	201	6	(N)	Bore * 1000
Stroke	<i>Hub</i>	207	6	(N)	Stroke * 1000
EngType	<i>Motorart</i>	213	3	(N)	Engine type (->KT 080)
ExhNorm	<i>Abgasnorm</i>	216	3	(N)	Exhaust norm (-> KT 63)
CylDesign	<i>ZylBauForm</i>	219	3	(N)	Cylinder design (-> KT 79)
EngMngmnt	<i>MotSteuer</i>	222	3	(N)	Engine management (-> KT 77)
ValveCtrl	<i>VentilSteuer</i>	225	3	(N)	Valve control (-> KT 78)
CoolType	<i>KuehlArt</i>	228	3	(N)	Cooling type (-> KT 76)
SalesTerm	<i>VkBez</i>	231	30	(C)	Sales description
Exclude	<i>Exclude</i>	261	1	(N)	0 = Inclusion, 1 = Exclusion of countries (→ DT 156)
Delete	<i>Delete</i>	262	1	N	1: Engine series is proposed for deletion, otherwise 0



156 Engine Country Restrictions

Source: TecDoc

Contents: Country restrictions for engines
Length: 15
Sorting: EngNo, CountryCode
Primary Key: EngNo, CountryCode

Name	Old name	Pos	Length	Type	Description
BrandNo	<i>DLNr</i>	000	4	N	Data Supplier Number Constant = 9999
TableNo	<i>SA</i>	004	3	N	Data Table Constant "156"
EngNo	<i>MotNr</i>	007	5	N	Unambiguous engine numbers (DT 155)
CountryCode	<i>LKZ</i>	012	3	C	Country Code (Key 010)

Notes: Country codes may not overlap.
The country code field CountryCode must contain a valid country code (<> Blank).



537 CV Types and Engine Allocation

Source: TecDoc

Contents: Allocation of engine numbers to CV primary and secondary types
 Max. Length: 65
 Sorting: NTypNo, NTypSubNo, SeqNo
 Primary Key: NTypNo, NTypSubNo, SeqNo

Name	Old name	Pos	Length	Type	Description
Reserved	<i>Reserviert</i>	000	22	C	Constantly blank
BrandNo	<i>DLNr</i>	022	4	N	Data Supplier Number Constant = 9999
TableNo	<i>SA</i>	026	3	N	Data Table Constant= 537
NTypNo	<i>NTypNr</i>	029	9	N	Unambiguous number of the CV primary type (->532)
NTypSubNo	<i>NTypSubNr</i>	038	3	N	Unambiguous number of the secondary type within a primary type (->535)
SeqNo	<i>LfdNr</i>	041	3	N	Sequential number within a NTypNo-NTypSubNo combination.
EngNo	<i>MotNr</i>	044	5	N	Engine Number (-> 155)
ModYFrom	<i>BJvon</i>	049	6	(N)	Model Year from (YYYYMM) – Production Date
ModYTo	<i>BJbis</i>	055	6	(N)	Model Year to (YYYYMM) – Production Date
CountryCode	<i>LKZ</i>	061	3	(C)	Country Code (-> 010)
Exclude	<i>Exclude</i>	064	1	(N)	'1' = Country Code is an exclusion, '0' = Country Code is an inclusion.



Axle Information

160 Axle

Source: TecDoc

Contents: Description of all Axle types

Length: 121

Sorting: ATypNo

Primary Key: ATypNo

Name	Old name	Pos	Length	Type	Description
BrandNo	<i>DLNr</i>	000	4	N	Data Supplier Number Constant = 9999
TableNo	<i>SA</i>	004	3	N	Data Table Constant = 160
ATypNo	<i>ATypNr</i>	007	5	N	Unambiguous Axle number
Term	<i>Bezeichnung</i>	012	30	C	Description (Axle type)
KmodNo	<i>KmodNr</i>	042	5	N	Model-Key (-> 110)
SortNo	<i>SortNr</i>	047	4	N	Sort-Key for Sorting
ModYFrom	<i>Bjvon</i>	051	6	(N)	Model Year from (YYYYMM) – Production Date
ModYTo	<i>Bjbis</i>	057	6	(N)	Model Year to (YYYYMM) – Production Date
AxleType	<i>AchsArt</i>	063	3	N	Axle type (KT 68)
AxleStyle	<i>Ausführung</i>	066	3	N	Style (KT 95)
BrakeType	<i>BremsAusf</i>	069	3	(N)	Brake type (KT 83)
AxleBody	<i>Achskörper</i>	072	3	(N)	Axle-body (KT 214)
MaxLoadFrom	<i>ZulLastVon</i>	075	5	(N)	Maximum Axle Load in Kg from
MaxLoadTo	<i>ZulLastBis</i>	080	5	(N)	Maximum Axle Load in Kg to
WheelMount	<i>RadBefestigung</i>	085	3	(N)	Wheel mounting (KT 213)
TrWidth	<i>Spurweite</i>	088	4	(N)	Track width (mm)
HubWidth	<i>Nabensystem</i>	092	20	(C)	Hub system
DrivHeightFrom	<i>Fahrhöhe von</i>	112	4	(N)	Distance between road pavement and vehicle frame from [mm]
DdrivHeightTo	<i>Fahrhöhe bis</i>	116	4	(N)	Distance between road pavement and vehicle frame to [mm]
Delete	<i>Delete</i>	120	1	N	1: ATypNr series is proposed for deletion, otherwise 0

161 Axle-Body Types

Source: TecDoc

Contents: Allocation of body types to Axle types

Length: 39

Sorting: ATypNo, SortNo, CountryCode

Primary Key: ATypNo, SortNo, BodyType

Name	Old name	Pos	Length	Type	Description
BrandNo	<i>DLNr</i>	000	4	N	Data Supplier Number Constant = 9999
TableNo	<i>SA</i>	004	3	N	Data Table Constant = 161
ATypNo	<i>AtypNr</i>	007	5	N	Unambiguous Axle number
CountryCode	<i>CountryCode</i>	012	3	(C)	Country Code (-> 010)
SortNo	<i>SortNr</i>	015	4	N	Display sequence of the sample within one Axle-type
BodyType	<i>Muster</i>	019	20	C	Axle Body Type

162 Axle-Wheelbases

Source: TecDoc

Contents: Allocation of wheelbases to Axle
Length: 27
Sorting: ATypNo, SeqNo, SortNo
Primary Key: ATypNo, SeqNo, SortNo

Name	Old name	Pos	Length	Type	Description
BrandNo	<i>DLNr</i>	000	4	N	Data Supplier Number Constant = 9999
TableNo	<i>SA</i>	004	3	N	Data Table Constant = 162
ATypNo	<i>AtypNr</i>	007	5	N	Unambiguous Axle number
SeqNo	<i>LfdNr</i>	012	3	N	Sequential number for the Axle-position within the Axle-type
SortNo	<i>SortNr</i>	015	3	N	Sequential number for the wheelbases within the Axle-position
AxlePos	<i>AchsPos</i>	018	3	C	Axle-position (KT 064)
Wheelbase	<i>Radstand</i>	021	6	N	Wheelbase (mm)

163 Axle-Brake-Size

Source: TecDoc

Contents: Allocation of Brake-sizes to Axles
Length: 38
Sorting: ATypNo, SeqNo
Primary Key: ATypNo, SeqNo

Name	Old name	Pos	Length	Type	Description
BrandNo	<i>DLNr</i>	000	4	N	Data Supplier Number Constant = 9999
TableNo	<i>SA</i>	004	3	N	Data Table Constant = 163
ATypNo	<i>AtypNr</i>	007	5	N	Unambiguous axle number
SeqNo	<i>LfdNr</i>	012	3	N	Sequential number for the brake-size within the axle-type
BrakeSze	<i>Bremsengröße</i>	015	3	N	brake-size (KT 216)
BrTerm	<i>Bezeichnung</i>	018	20	(C)	brake-size description

164 Allocation of Axle-types to CV Types

Source: TecDoc

Contents: Allocation of Axle-types to primary CV Types
 Max. Length: 46
 Sorting: NTypNo, SeqNo, SortNo, (CountryCode)
 Primary Key: NTypNo, SeqNo, ATypNo, (CountryCode)

Name	Old name	Pos	Length	Type	Description
BrandNo	<i>DLNr</i>	000	4	N	Data Supplier Number Constant = 9999
TableNo	<i>SA</i>	004	3	N	Data Table Constant = 163
NTypNo	<i>NtypNr</i>	007	9	N	Unambiguous CV Type number
SeqNo	<i>LfdNr</i>	016	3	N	Sequential number within the NtypNr
SortNo	<i>SortNr</i>	019	3	N	Sorting of the linkage within the Axle-position
ATypNo	<i>ATypNr</i>	022	5	N	Axle-type-number (-> 160)
AxlePos	<i>AchsPos</i>	027	3	N	Axle-position (KT 064)
ModYFrom	<i>BJvon</i>	030	6	(N)	Model Year from (YYYYMM) – Production Date
ModYTo	<i>BJbis</i>	036	6	(N)	Model Year to (YYYYMM) – Production Date
CountryCode	<i>LKZ</i>	042	3	(C)	Country Code (-> 010)
Exclude	<i>Exclude</i>	045	1	(N)	= Inclusion, 1 = Exclusion of countries



Search Structure



301 Tecdoc Search Structure

Source: TecDoc

Contents: Hierarchically structured search tree
 Length: 60
 Sorting: Node_ID
 Primary Key: Node_ID

Name	Old name	Pos	Length	Type	Description
Reserved	<i>Reserviert</i>	000	22	C	Constantly blank
BrandNo	<i>DLNr</i>	022	4	N	Data Supplier Number Constant = 9999
TableNo	<i>SA</i>	026	3	N	Data Table Constant= 301
Node_ID	<i>Node_ID</i>	029	7	N	Unambiguous number of the search node
TreeTypNo	<i>TreeTypNr</i>	036	3	N	Product section of the search node (KT 999)
Level	<i>Stufe</i>	039	2	N	Number of the hierarchical level ² of the search
Node_Parent_ID	<i>Node_Parent_ID</i>	041	7	(N)	Node_ID of an entry in the relevant superior hierarchy level that is allocated this search node ³
SortNo	<i>SortNr</i>	048	2	N	Sorting order of the search node that belongs to a Node_Parent_ID.
TermNo	<i>BezNr</i>	050	9	N	Number of the description text (-> 030)
GenArtOK	<i>WertOK</i>	059	1	N	0, when grouping, 1, when the generic article is allowed for this code

² Level 1 is the highest hierarchical level. The limitation to 4 hierarchical levels is removed with the Data Release 0914 (Quarter 04/2014)

³ This field is empty when the data record describes an entry in the superior hierarchy level.



302 Allocation of GenArt to Search Structure

Source: TecDoc

Contents: Allocation of generic articles to the Tecdoc search structure
Length: 43
Sorting: Node_ID, SortNo
Primary Key: Node_ID, GenArtNo

Name	Old name	Pos	Length	Type	Description
Reserved	<i>Reserviert</i>	000	22	C	Constantly blank
BrandNo	<i>DLNr</i>	022	4	N	Data Supplier Number Constant = 9999
TableNo	<i>SA</i>	026	3	N	Data Table Constant= 301
Node_ID	<i>Node_ID</i>	029	7	N	Unambiguous number of the search node (->301)
SortNo	<i>SortNr</i>	036	2	N	Sorting order within a search node
GenArtNo	<i>GenArtNr</i>	038	5	N	Unambiguous number of the generic article (->320)



304 Allocation of Criteria to the Search Structure

Source: TecDoc

Contents: Allocation of criteria to combinations of search tree nodes and generic articles within the TecDoc search structure

Length: 46

Sorting: Node_ID, GenArtNo, SortNo

Primary Key: Node_ID, GenArtNo, CritNo, CritVal

Name	Old name	Pos	Length	Type	Description
BrandNo	<i>DLNr</i>	000	4	N	Data Supplier Number Constant = 9999
TableNo	<i>SA</i>	004	3	N	Data Table Constant= 304
Node_ID	<i>Node_ID</i>	007	7	N	Unambiguous number of the search node (->301)
GenArtNo	<i>GenArtNr</i>	014	5	N	Unambiguous number of the generic article (->320)
SortNo	<i>SortNr</i>	019	3	N	Sorting order within one search node
CritNo	<i>KritNr</i>	022	4	N	Unambiguous number of the criterion (DT050), must be of type 'K'
CritVal	<i>KritWert</i>	026	20	C	Criterion Value



305 Quick-start Icons

Source: TecDoc

Contents: Description of the quick-start icons
Length: 50
Sorting: QS_ID
Primary Key: QS_ID

Name	Old name	Pos	Length	Type	Description
BrandNo	<i>DLNr</i>	000	4	N	Data Supplier Number Constant = 9999
tableNo	<i>SA</i>	004	3	N	Data Table Constant= 305
QS_Id	<i>QS_Id</i>	007	4	N	Unambiguous number of the quick-start icons
termNo	<i>BezNr</i>	011	9	N	Number of the description text -> 030
DocName	<i>BildName</i>	020	30	C	Documentname (of Icon) with extension



306 Allocation of Quick-start Icons to Product Areas

Source: TecDoc

Contents: The allocation of quick-start icons to the product areas (PC, CV, etc.)
Length: 17
Sorting: TreeTypNo, QS_Id
Primary Key: TreeTypNo, QS_Id

Name	Old name	Pos	Length	Type	Description
BrandNo	<i>DLNr</i>	000	4	N	Data Supplier Number Constant = 9999
TableNo	<i>SA</i>	004	3	N	Data Table Constant= 306
TreeTypNo	<i>TreeTypNr</i>	007	3	N	Product area of the search node
QS_Id	<i>QS_Id</i>	010	4	N	Unambiguous number of the quick-start icon -> 305
SortNo	<i>SortNr</i>	014	3	N	Quick-start icons sorting within the product area



307 The Allocation of Quick-start Icons to Nodes/Leaves within one Product Area

Source: TecDoc

Contents: Allocation of quick-start icons to Nodes/Leaves within one product area (PC, CV, etc.)
 Length: 24
 Sorting: TreeTypNo, QS_Id, Node_ID
 Primary Key: TreeTypNo, QS_Id, Node_ID

Name	Old name	Pos	Length	Type	Description
BrandNo	<i>DLNr</i>	000	4	N	Data Supplier Number Constant = 9999
TableNo	<i>SA</i>	004	3	N	Data Table Constant= 307
TreeTypNo	<i>TreeTypNr</i>	007	3	N	Product area of the search node
QS_Id	<i>QS_Id</i>	010	4	N	Unambiguous number of the quick-start icon -> 305
Node_ID	<i>Node_ID</i>	014	7	N	Unambiguous number of the search node ->301
SortNo	<i>SortNr</i>	021	3	N	Sorting of nodes/leaves within one product area after calling the quick-start icons (separate search tree, may deviate from DT 301).

Generic Articles

With the TecDoc Format version 2.6 some adjustments and extensions become effective to further improve the quality of the TecDoc catalogue data.

The changes follow the already published and reported new rules of the TecDoc Data Quality Management (DQM) initiative started in 2020.

The use of criteria can be limited - depending on the generic article - as follows:

Mandatory Criteria:

Generic Articles may expect specific criteria for a mandatory usage.
The information is given in table 328 as before.

Permitted optional criteria for first catalogue page:

The usage of other criteria than the mandatory ones is further restricted as far as the first catalogue page is considered. These permitted criteria for each Generic Article are provided in the new table 331.

Even if table 329 incl. proposed criteria still remains for now, all other criteria can still be used but must not be displayed on the first catalogue page.

Permitted criteria (key table) values for specific criteria/GA combinations

Some criteria of type "key table" are further restricted in a way that only parts of the key values are permitted for usage on certain Generic Articles. This option is extended to first page optional (table 329) criteria. This works without change in structure as the Sequence Number (SerqNo) filed in tables 328 and 329 is already unique for all entries in both tables. So a Sequence Number in table 330 uniquely identifies entries in table 328 or table 329.

As this is not a very comfortable way of referencing data we provide a (redundant) extension **by introducing table 331** that is basically a merge of tables 328 and 329. It does not provide new content but a more comfortable way to handle table 330 restrictions.

One of the main points of criticism about quality of TecDoc data was the nearly arbitrary use of criteria of type N (numerical) or C (Character). Especially comparing the content of the same numerical criterion values of different brands to identify a spare part shows huge differences in formatting that makes catalogues hard to use.

Table 332: Criteria constraints

This new table contains – for specific Generic Articles – some unambiguous formatting rules for some important criteria. For instance the schema for some numerical values is limited to a maximum digits after a separator (that is standardised as well). The tables uses Regular Expressions to describe the constraint. They can directly be used inside software modules. As they are hard to understand for non technical people the types of regular expressions used inside the table are listed and explained.



320 Generic Articles

Source: TecDoc

Contents: Generic Articles
 Length: 41
 Sorting: GenArtNo
 Primary Key: GenArtNo

Name	Old name	Pos	Length	Type	Description
BrandNo	<i>DLNr</i>	000	4	N	Data Supplier Number Constant = 9999
TableNo	<i>SA</i>	004	3	N	Data Table Constant= 320
GenArtNo	<i>GenArtNr</i>	007	5	N	Unambiguous number of the generic article
NormTermNo	<i>NartNr</i>	012	5	N	Unambiguous number of the standardised article description (-> 323)
AssGrpNo	<i>BgNr</i>	017	4	(N)	Unambiguous number of the assembly group (->324)
UsageNo	<i>VerwNr</i>	021	4	(N)	Unambiguous number of the usage (->325)
TermNo	<i>BezNr</i>	025	9	N	Description Number (-> 030) for description of the GenArt
OK_PC	<i>OK_PKW</i>	034	1	N	0: not allowed in PC linkage (->400). Otherwise 1.
OK-CV	<i>OK-NKW</i>	035	1	N	0: not allowed in CV linkage (->400). Otherwise 1.
OK-Eng	<i>OK-Motor</i>	036	1	N	0: not allowed in engine linkage (->400). Otherwise 1.
OK-Universal	<i>OK-Universal</i>	037	1	N	0: is not a universal generic article, otherwise 1
OK-Ind	<i>OK-FZGUnab</i>	038	1	N	0: is not allowed for vehicle independent search, otherwise 1
Delete	<i>Delete</i>	039	1	N	1: GenArt is earmarked for deletion, otherwise 0
OK-Axle	<i>OK-Achse</i>	040	1	N	0: not allowed in Axle linkage (->400). Otherwise 1.

Comments: A flag *OK-LCV* is currently not planned. All generic articles with the flag *OK-PC* are allowed for a linkage to LCV.



323 Standardised Article Description

Source: TecDoc

Contents: Standardised article description
Length: 43
Sorting: NormTermNo
Primary Key: NormTermNo

Name	Old name	Pos	Length	Type	Description
Reserved	<i>Reserviert</i>	000	22	C	Constantly blank
BrandNo	<i>DLNr</i>	022	4	N	Data Supplier Number Constant = 9999
TableNo	<i>SA</i>	026	3	N	Data Table Constant= 323
NormTermNo	<i>NartNr</i>	029	5	N	Unambiguous number of the standardised article description
TermNo	<i>BezNr</i>	034	9	N	Description Number (-> 030)



324 Assembly Groups

Source: TecDoc

Contents: Assembly groups
Length: 42
Sorting: AssGrpNo
Primary Key: AssGrpNo

Name	Old name	Pos	Length	Type	Description
Reserved	<i>Reserviert</i>	000	22	C	Constantly blank
BrandNo	<i>DLNr</i>	022	4	N	Data Supplier Number Constant = 9999
TableNo	<i>SA</i>	026	3	N	Data Table Constant= 324
AssGrpNo	<i>BgNr</i>	029	4	N	Unambiguous number of the assembly group
TermNo	<i>BezNr</i>	033	9	N	Description Number (-> 030)



325 Purpose of Use

Source: TecDoc

Contents: Purpose of use
Length: 42
Sorting: UsageNo
Primary Key: UsageNo

Name	Old name	Pos	Length	Type	Description
Reserved	<i>Reserviert</i>	000	22	C	Constantly blank
BrandNo	<i>DLNr</i>	022	4	N	Data Supplier Number Constant = 9999
TableNo	<i>SA</i>	026	3	N	Data Table Constant= 325
UsageNo	<i>VerwNr</i>	029	4	N	Unambiguous number of the usage purpose
TermNo	<i>BezNr</i>	033	9	N	Description Number (-> 030)



327 Generic Article Synonyms

Source: TecDoc

Contents: Synonyms of the generic articles
Length: 100
Sorting: GenArtNo, SeqNo, LangNo
Primary Key: GenArtNo, SeqNo, LangNo

Name	Old name	Pos	Length	Type	Description
Reserved	<i>Reserviert</i>	000	22	C	Constantly blank
BrandNo	<i>DLNr</i>	022	4	N	Data Supplier Number Constant = 9999
TableNo	<i>SA</i>	026	3	N	Data Table Constant= 327
GenArtNo	<i>GenArtNr</i>	029	5	N	Unambiguous number of the generic article (->320)
SeqNo	<i>LfdNr</i>	034	3	N	Sequential number within a generic article
LangNo	<i>LangNo</i>	037	3	N	Language Number (-> 020)
Term	<i>Bez</i>	040	60	C	Descriptions



328 Mandatory Criteria

Source: TecDoc

Contents: Mandatory criteria for generic articles
 Max. Length: 47
 Sorting: GenArtNo, SeqNo
 Primary Key: GenArtNo, SeqNo

Name	Old name	Pos	Length	Type	Description
Reserved	<i>Reserviert</i>	000	22	C	Constantly blank
BrandNo	<i>DLNr</i>	022	4	N	Data Supplier Number Constant = 9999
TableNo	<i>SA</i>	026	3	N	Data Table Constant= 328
GenArtNo	<i>GenArtNr</i>	029	5	N	Unambiguous number of the generic article (->320)
SeqNo	<i>LfdNr</i>	034	3	N	Sequential number within one GenArtNo
Reserved2	<i>n/a</i>	037	3	C	Former country code – not used anymore
CritNo	<i>KritNr</i>	040	4	N	Criterion Number (-> 050)
OnlyArt	<i>Only210</i>	044	1	N	1: must be specified as an article criterion (-> 210). Otherwise 0.
OnlyLnk	<i>Only400</i>	045	1	N	1: must be specified as linkage criterion (-> 400). Otherwise 0.
Exclude	<i>Exclude</i>	046	1	(N)	Const = 0



329 Proposed Criteria

Source: TecDoc

Contents: Proposed criteria for generic articles
 Max. Length: 47
 Sorting: GenArtNo, SeqNo
 Primary Key: GenArtNo, SeqNo

Name	Old name	Pos	Length	Type	Description
Reserved	<i>Reserviert</i>	000	22	C	Constantly blank
BrandNo	<i>DLNr</i>	022	4	N	Data Supplier Number Constant = 9999
TableNo	<i>SA</i>	026	3	N	Data Table Constant= 329
GenArtNo	<i>GenArtNr</i>	029	5	N	Unambiguous number of the generic article (->320)
SeqNo	<i>LfdNr</i>	034	3	N	Sequential number within a GenArtNr
Reserved2	<i>n/a</i>	037	3	(C)	Former Country Code (not used anymore)
CritNo	<i>KritNr</i>	040	4	N	Criterion Number (-> 050)
Art	<i>210</i>	044	1	N	Const = 0 (please refer to table 050)
Lnk	<i>400</i>	045	1	N	Const = 0 (please refer to table 050)
Exclude	<i>Exclude</i>	046	1	(N)	Const = 0.

330 Allocation of Criteria Values to GA Criteria (until Reference Data version 1122)

Source: TecDoc

Contents: Allocation of criteria values to GA criteria
Length: 21
Sorting: GenArtNo, SeqNo, SortNo
Primary Key: GenArtNo, SeqNo, CritVal

Name	Old name	Pos	Length	Type	Description
BrandNo	<i>DLNr</i>	000	4	N	Data Supplier Number Constant = 9999
TableNo	<i>SA</i>	004	3	N	Data Table Constant= 330
GenArtNo(*)	<i>GenArtNr</i>	007	5	N	Unambiguous number of the generic article (->320)
SeqNo(*)	<i>LfdNr</i>	012	3	N	LfdNr (→328/329)
SortNo	<i>SortNr</i>	015	3	N	Sorting Order
CritVal	<i>KritWert</i>	018	3	C	Criterion Value, criterion must be of type 'K'

(*): The pair GenArtNo/SeqNo is identifying exactly one entry from table 328 or table 329. These two tables together deliver a unique set of GenArtNo/SeqNo values.



331 Criteria allocated to Generic Articles ... New table in format version 2.6

Attention:

This table provides a merge of the table 328 content and the new DQM standard for optional criteria in order to provide an easy to use way to integrate the new and extended standardisation of criteria usage for display on the first catalogue page.

It is as well possible to continue using tables 328 and 329 (please take care of adjusted content!) until Reference Data version 0623 – delivered on May, 15th 2023. From version 0723 (delivered on June, 12th) 2023) on the tables 328, 329 and 330 are not delivered anymore.

Source: TecDoc

Contents: Permitted Generic Article/Criteria combinations for use on first catalogue page
 Length: 22
 Sorting: GenArtNo, SortNo , CritNo
 Primary Key: GenArtNo, CritNo

Name	Pos	Length	Type	Description
BrandNo	000	4	N	Data Supplier Number Constant = 9999
TableNo	004	3	N	Data Table Constant= 331
GenArtNo	007	5	N	Unambiguous number of the generic article (->320)
SortNo	012	4	(N)	Sort order for display of criteria on first catalogue page. Needs to be unique for all entries of one GA. Not required for usage=2 criteria
CritNo	016	4	N	Criterion Number (-> 050)
Usage	020	1	N	1=mandatory / 0=DQM Differentiation Attributes (optional on 1 st page) / 2=recommended (*)
OnlyArticle	021	1	(N)	Only allowed to be used on article level (**)

(*) For GA/Criteria combinations that are already standardised by DQM measures only the values 1 and 0 are part of the data. For all other GA/criteria combinations the values are 1 or 2, what indicates recommended attributes like the ones given in table 329. An earlier version of documentation contains a usage '9' (not permitted). This is not yet implemented but might be added in the future.

(**) Will be delivered first with version 1121 on October, 14th 2021



General remark:

All criteria not listed in this table are not recommended for use at all. If they are still used they must not be flagged for display on the first catalogue page. The validations in TecAlliance data maintenance tools and interfaces will take care.

If a Generic Article does not appear in this list at all, there are no restrictions in criteria usage.



332 Allocation of Criteria Values to GA Criteria (new TA DQM standard) ... New table in format version 2.6

Source: TecDoc

Contents: Allocation of criteria values to GA criteria (new TA DQM standard)
Length: 19
Sorting: GenArtNo, CritNo, CritVal
Primary Key: GenArtNo, CritNo, CritVal

Name	Pos	Length	Type	Description
BrandNo	000	4	N	Data Supplier Number Constant = 9999
TableNo	004	3	N	Data Table Constant= 332
GenArtNo	007	5	N	References entry in table 331
CritNo	012	4	N	
CritVal	016	3	C	Criterion Value, criterion must be of type 'K'

333 Criteria constraints ... New table in format version 2.6

Source: TecDoc

Contents: Constraints to standardise the usage of (numeric) criteria
 Length: 119
 Sorting: CritNoType, CritNo(, GenArtNo)
 Primary Key: CritNoType, CritNo(, GenArtNo)

Name	Old name	Pos	Length	Type	Description
BrandNo	DLNr	000	4	N	Data Supplier Number Constant = 9999
TableNo	SA	004	3	N	Data Table Constant= 333
CritNo	n/a	007	4	N	Criteria number (→ 050.CritNo)
CritNoType	n/a	011	3	C	"050": CritNo contains reference to table 050 "053": CritNo contains reference to table 053
GenArtNo	n/a	014	5	(N)	Generic Article No (→ 320.GenArtNo)
Constraint	n/a	019	100	C	Rule for value of CritNo used for article of GenArtNo. Provided as Regular Expression following <tb> standard notation

Examples for Regular Expressions used in table 331:

What it means?	Regular expression
For numerical mandatory fields of the exact length l:	<code>[\d]{l}</code>
For numerical mandatory fields up to the length l:	<code>[\d]{1,l}</code>
For numerical fields with n pre-decimal places and m decimal places	<code>[0-9]{n}[\.][0-9]{m}</code>
For numerical fields with maximum of one digit after the comma	<code>[0-9]{1,4}([\,][0-9]{0,1}){0,1}</code>
For alphanumeric mandatory fields of the exact length l:	<code>[\w]{l}</code>
For alphanumeric mandatory fields up to the length l	<code>[\w]{1,l}</code>
For a fixed length field of length n with numeric characters and leading zeros (Classical TAF representation of numeric IDs, like kTypeNo)	<code>(?!000000000)[0-9]{9}</code> <i>Example with length = 9</i>
For a single-digit field with the permitted values "a", "b" or "c"	<code>[abc]</code>



For a date field in the yyymm format	(19 20)[0-9]{2} (0[1-9] 1[012])
For fields of length l that are only permitted to contain uppercase and lowercase letters between a/A and z/Z	[a-zA-Z]{l}

In case of **multiple entries for one CritNo**, the ones including a GenArtNo have always a higher priority than the one without a GenArtNo.

The semantics in this case is that in general the Criteria *CritNo* requires a format <RegEx1> but if *CritNo* is used for an article allocated to Generic Article *GenArtNo* it requires a format <RegEx2>

340 DQM – Generic Articles and Engine Types Permission

(from Data Release DR2223)

Maintenance of product linkages to vehicles are often based on more or less automated processes where products are linked to groups of vehicles following company specific rules and algorithms.

This worked and works fine in many cases.

However as the diversity of vehicles is increasing we are facing more linkages that contain some useless and incorrect information – like allocation of exhaust related products to an electric vehicle.

Providing better information for electric and hybrid vehicles is one part of improving the situation. TecAlliance will announce and implement reasonable changes in 2022.

It is further intended to make up allocations of Generic Articles to Engine Types (Key Table 80 entries) to support data maintenance and to allow a validation of data in order to avoid these constellations.

The new table contains of three basic elements:

The Generic Article Number

A valid engine type from key table 80

Source: TecDoc

Contents:	Permitted allocations of Engine Types to Generic Articles (*)
Length:	15
Sorting:	GenArtNo, EngineType
Primary Key:	GenArtNo, EngineType

Name	Pos	Length	Type	Description
BrandNo	000	4	N	Data Supplier Number Constant = 9999
TableNo	004	3	N	Data Table Constant "340"
GenArtNo	007	5	N	Generic Article Number (→320)
EngineType	012	3	C	→ Key Table 080

(*) Any combination is permitted in case a Generic Article does not appear in this table at all



4 Data Supplier Data



General Supplier Data Tables



035 Text Modules

Source: Data Supplier

Contents: Text modules in various languages
 Length: 103
 Sorting: TxtModNo, LangNo, SeqNo
 Primary Key: TxtModNo, LangNo, SeqNo

Name	Old name	Pos	Length	Type	Description
Reserved	<i>Reser ved</i>	000	22	C	Constantly Blank
BrandNo	<i>DLNr</i>	022	4	N	Data Supplier Number Constant
TableNo	<i>SA</i>	026	3	N	Data Table Constant '035'
TxtModNo	<i>TBSNr</i>	029	6	C	Match code of the text module
LangNo	<i>SprachNr</i>	035	3	N	Language Number (-> 020)
Fixed	<i>Fixed</i>	038	1	N	Fixed font = '1': A non-proportional font is used to display such a text module on the CD system.
SeqNo	<i>LfdNr</i>	039	3	N	Sequential number (= Line) of text
Text	<i>Text</i>	042	60	U	Text Line
DeleteFlag	<i>Lösch-Flag</i>	102	1	N	<i>Const = 0</i>

Notes: A text module may contain blank lines but may not consist of blank lines only.

The sequential number starts at 001 and increases with one for each text line of a module.

A sequential number should not be repeated within one language and text module.



040 Data Supplier Main Address

Source: Data Supplier

Contents: Main address of the data supplier
 Length: 448
 Sorting: BrandNo, AdrType
 Primary Key: BrandNo, AdrType

Name	Old name	Pos	Length	Type	Description
BrandNo	<i>DLNr</i>	000	4	N	Data Supplier Number Constant (->040), must correspond with the data supplier number from DT 001
TableNo	<i>SA</i>	004	3	N	Data Table Constant '040'
Term1	<i>Bez</i>	007	40	(U)	Description 1
Term2	<i>Bez2</i>	047	40	(U)	Description 2
Street1	<i>Straße</i>	087	40	(U)	Street 1
Street2	<i>Strasse2</i>	127	40	(U)	Street 2
POBox	<i>Postfach</i>	167	10	(U)	P. O. Box
CountryPrefix	<i>PLZLKZ</i>	177	3	(U)	Country code for postal code PLZ, i.e. D-22926 (-> 010)
PostCode	<i>PLZOrt</i>	180	8	(U)	Postal code
PostCodePOBox	<i>PLZPf</i>	188	8	(U)	Postal code P.O. Box
PostCodeCus	<i>PLZGr</i>	196	8	(U)	Postal code key customer
City1	<i>Ort</i>	204	40	(U)	City 1
City2	<i>Ort2</i>	244	40	(U)	City 2
Phone	<i>Telefon</i>	284	20	(U)	Telephone
Fax	<i>Fax</i>	304	20	(U)	Fax
Email	<i>Email</i>	324	60	(U)	Email Address
Web	<i>Web</i>	384	60	(U)	Web Site
AdrType	<i>Adressart</i>	444	3	N	Address type from KT 59 (-> SA 052)
DeleteFlag	<i>Lösch-Flag</i>	447	1	N	<i>Const = 0</i>

Note: One data record that contains the address type 'General Address' must be present.



042 Data Supplier Logos

Source: Data Supplier

Contents: Logo of the Data Supplier
 Length: 22
 Sorting: CountryCode
 Primary Key: CountryCode

Name	Old name	Pos	Length	Type	Description
BrandNo	<i>DLNr</i>	000	4	N	Data Supplier Number Constant
TableNo	<i>SA</i>	004	3	N	Data Table Constant "042"
CountryCode	<i>LKZ</i>	007	3	(C)	Country Code (-> 010)
DocNo	<i>BildNr</i>	010	9	N	Unambiguous Graphic Number (DT 231) ($\geq 100.00 * \text{DatSupNo}$, $< 100.000 * (\text{DatSupNo} + 1)$)
DocType	<i>DokumentenArt</i>	019	2	N	-> DT 014
DeleteFlag	<i>Lösch-Flag</i>	021	1	N	<i>Const = 0</i>

Notes:

- CountryCode 'Blank' takes the main address from the DT 040
- The combination *BildNr*, *Dokumentenart* must be contained in the DT 231.
- The usage of "DokumentenArt" URL is not permitted (-> DT 014)
- The *BildNr* used in the DT 042 must be of the document type 'Logo' in the DT 231. (KT 143, Entry 02)
- Maximum size of Logo is 130 x 90 Pixel

043 Data Supplier Addresses

Source: Data Supplier

Contents: Addresses of the Data Supplier
 Length: 451
 Sorting: BrandNo, AdrType, CountryCode
 Primary Key: BrandNo, AdrType, CountryCode

Name	Pos	Length	Type	Description
BrandNo	000	4	N	Data Supplier Number Constant (->040), must correspond with the data supplier number from DT 001
TableNo	004	3	N	Data Table Constant "043"
AdrType	007	3	N	Address type from KT 59 (-> 052)
CountryCode	010	3	C	Country Code (-> 010)
Term1	013	40	(U)	Description 1
Term2	053	40	(U)	Description 2
Street1	093	40	(U)	Street 1
Street2	133	40	(U)	Street 2
POBox	173	10	(U)	P. O. Box
CountryPrefix	183	3	(U)	Country code for postal code PLZ, i.e. D-22926 (-> 010)
PostCode	186	8	(U)	Postal code
PostCodePOBox	194	8	(U)	Postal code for P.O. Box
PostCodeCus	202	8	(U)	Postal code for key customer
City1	210	40	(U)	City 1
City2	250	40	(U)	City 2
Phone	290	20	(U)	Telephone
Fax	310	20	(U)	Fax
Email	330	60	(U)	E-mail Address
Web	390	60	(U)	Web Site
DeleteFlag	450	1	N	Const = 0

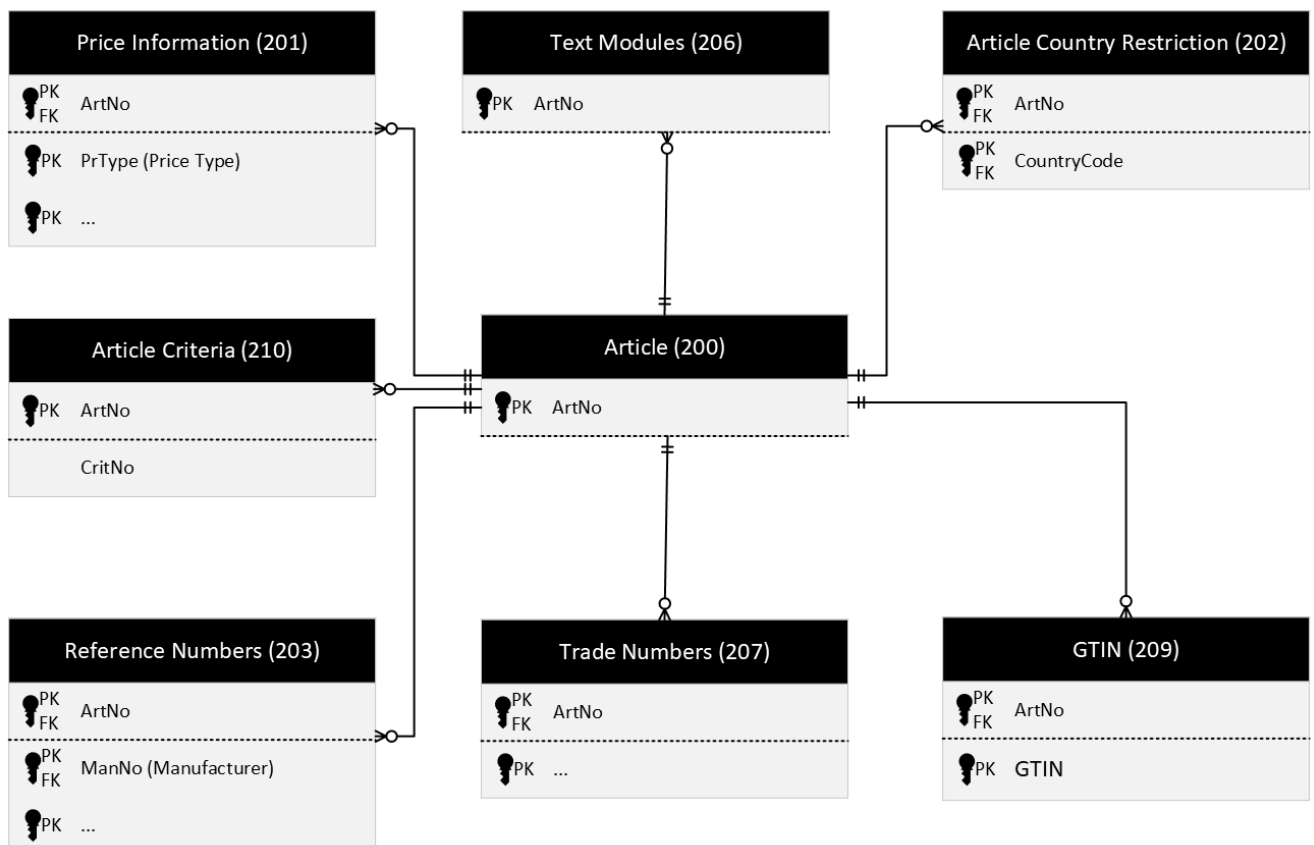
Article Data Tables

Please note that the following diagram does not cover the full design but is added to give a rough overview on the relations inside the business object "article" by indicating the basic relations and basic keys. Detailed information can be derived from the table specifications.

Basic article information :

These parts of the data contain the basic information about an article as is:

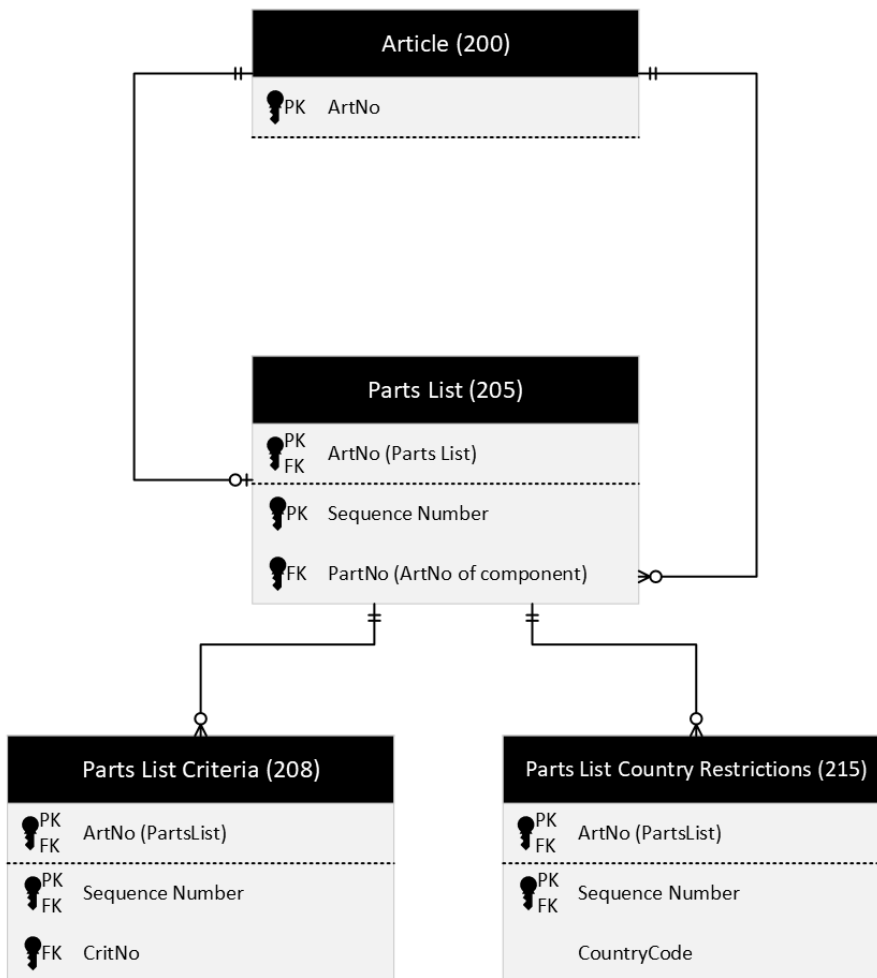
- Country validity
- Article Criteria
- Prices
- Text Modules
- OE and competitor References
- Multiple alternative article numbers



Parts Lists

Parts Lists are collections of article – mainly for two basic use cases:

- Describing sets where articles (that might as well be delivered separately) are offered together under an own parts-list-number.
- Describing so called "pseudo articles" in order to group articles to be displayed together in a catalog without an own article number to order the "pseudo article". Please find more information in table 205 description.

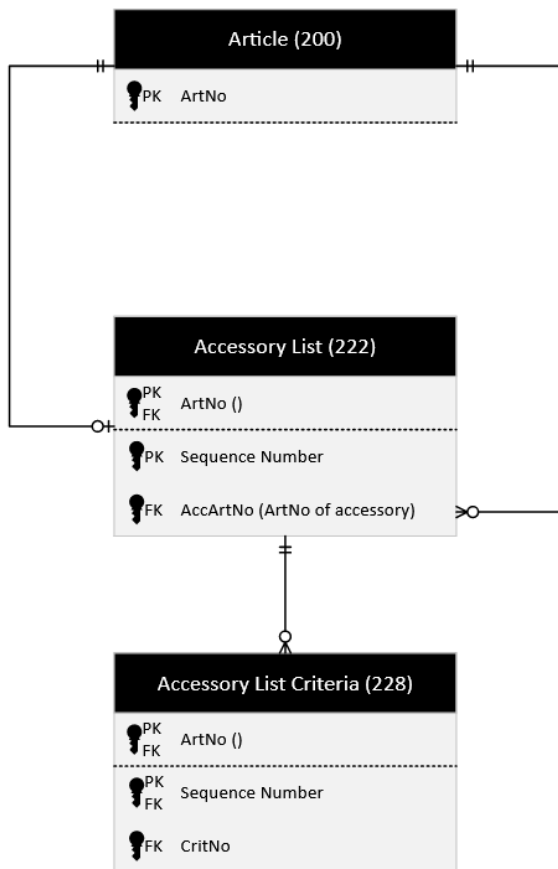


Each position in the parts list (component) can be specified by one or more criteria and can be restricted to be valid in certain countries.

Accessories

Accessories are collected in lists to inform about products that might be useful together with the main article but that are not needed to fulfil the basic use case.

Please note: there is no option to restrict accessories to specific countries.



200 Article Table

Source: Data Supplier

Contents: Main Article Data Table
 Length: 53
 Sorting: ArtNo
 Primary Key: ArtNo

Name	Old name	Pos	Length	Type	Description
ArtNo	<i>ArtNr</i>	000	22	U	Article Number in the data supplier format
BrandNo	<i>DLNr</i>	022	4	N	Data Supplier Number Constant (-> 040)
TableNo	<i>SA</i>	026	3	N	Data Table Constant « 200 »
TermNo	<i>BezNr</i>	029	9	(N)	Description text number in the language key table
SelfServ	<i>KZSB</i>	038	1	(N)	Self-service packing = 1, otherwise 0
MatCert	<i>KZMat</i>	039	1	(N)	Mandatory material certification = 1, otherwise 0
Remanufact	<i>KZAT</i>	040	1	(N)	Exchange Part = 1, otherwise 0
Accessory	<i>KZZub</i>	041	1	(N)	Accessory = 1, otherwise 0
BatchSize1	<i>LosGr1</i>	042	5	(N)	Batch size 1 (multiple of VPE)
BatchSize2	<i>LosGr2</i>	047	5	(N)	Batch size 2 (multiple of BatchSize1)
DeleteFlag	<i>Lösch-Flag</i>	052	1	N	const = 0

(*) Type 'U' starting Data Release 0519 – type 'C' until then

Notes: Every article should have an article-status in table 212 (Country-Specific Article-data). Article-numbers, without any article-status in table 212, will get the default article-status 1 (Normal-status) per DVM (Data Validation Modul).



201 Price Information

Source: Data Supplier

Contents: Article price table
 Length: 87
 Sorting: ArtNo, CountryCode, CurCode, PrType, PrUnit, PrQuantUnit, ValidFrom
 Primary Key: ArtNo, PrType, CountryCode, CurCode, ValidFrom, PrUnit, PrQuantUnit

Name	Old name	Pos	Length	Type	Description
ArtNo	<i>ArtNr</i>	000	22	U	Article Number in the data supplier format
BrandNo	<i>DLNr</i>	022	4	N	Data Supplier Number Constant
TableNo	<i>SA</i>	026	3	N	Data Table Constant « 201 »
Price	<i>Preis</i>	029	10	(N)	Gross price with two decimal spaces or blank for price on demand
PrUnit	<i>PENr</i>	039	3	N	Price Unit (KT 070)
PrQuantUnit	<i>MENr</i>	042	3	C	Quantity Unit (KT 071)
ValidFrom	<i>Datvon</i>	045	8	N	Price valid from YYYYMMDD.
ValidTo	<i>Datbis</i>	053	8	(N)	Price valid to YYYYMMDD
CountryCode	<i>LKZ</i>	061	3	C	Country code for currency country (-> 010).
PrType	<i>PrArt</i>	064	3	N	Price Type (KT 074).
Reserved	<i>Reserved</i>	067	10	(C)	Constantly blank
CurCode	<i>WKZ</i>	077	3	C	Currency Code (KT 150)
DiscGroup	<i>Rabattgruppe</i>	080	5	(C)	Discount group
Dicount	<i>Minderrabatt</i>	085	1	(N)	Discount
DeleteFlag	<i>Lösch-Flag</i>	086	1	N	const = 0

Notes: Each article may contain more than one valid price information record for different countries, price types, currencies, and dates of validity.



Only individual countries and **no** country groups may be entered in the field *CountryCode*.
Price validity dates for the same country (currency) must be individually conclusive.
Each *ArtNo* must be contained in the data table (->DT200).

202 Article Country Restrictions

Source: Data Supplier

Contents: Inclusion/Exclusion of certain countries for an article
Length: 34
Sorting: ArtNo, CountryCode
Primary Key: ArtNo, CountryCode

Name	Old name	Pos	Length	Type	Description
ArtNo	<i>ArtNr</i>	000	22	U	Article Number in the data supplier format
BrandNo	<i>DLNr</i>	022	4	N	Data Supplier Number Constant
TableNo	<i>SA</i>	026	3	N	Data Table Constant « 202 »
CountryCode	<i>LKZ</i>	029	3	C	Country Code (-> 010)
Exclude	<i>Exclude</i>	032	1	N	'1' = Country Code is an exclusion, '0' = Country Code is an inclusion.
DeleteFlag	<i>Lösch-Flag</i>	033	1	N	const = 0

Notes: An article is normally valid worldwide. If the validity of an article is to be restricted to one or more countries, this data table (-> 202) can be used to specify such information. Certain pre-defined country groups may also be used.

It is also possible to state that an article is valid for all countries except

In such a case one should set the code *Exclude* to '1'. Country codes may not overlap. When, for instance, three records are delivered for one article with the inclusion set for 'EU', 'USA', and 'D', this will not be permissible since D (Germany) is a member of the EU and this was already specified as an inclusion.

All country codes for one article must either be set as inclusion or as exclusion. The mixing of these specifications is not allowed.

Each *ArtNo* must be contained in the data table (->200).

203 Reference Numbers

Source: Data Supplier

Contents: Reference numbers for articles by vehicle manufacturers
 Max. Length: 71
 Sorting: ArtNo, ManNo, SortNo, (CountryCode)
 Primary Key: ArtNo, ManNo, SortNo, (CountryCode)

Name	Old name	Pos	Length	Type	Description
ArtNo	<i>ArtNr</i>	000	22	U	Article Number in the data supplier format
BrandNo	<i>DLNr</i>	022	4	N	Data Supplier Number Constant
TableNo	<i>SA</i>	026	3	N	Data Table Constant= 203
ManNo	<i>HerNr</i>	029	6	N	Manufacturer (-> 100)
CountryCode	<i>LKZ</i>	035	3	(C)	Country Code (-> 010)
RefNo	<i>RefNr</i>	038	22	U	Reference number for this manufacturer
Exclude	<i>Exclude</i>	060	1	(N)	'1' = Country Code is an exclusion, '0' = Country Code is an inclusion.
SortNo	<i>Sort</i>	061	5	N	Display sequence of this record
Additive	<i>Additiv</i>	066	1	N	0/1: Record builds a block with the parent
ReferenceInfo	<i>ReferenzInfo</i>	067	3	(C)	Reference type (KT 270)
DeleteFlag	<i>Lösch-Flag</i>	070	1	N	const = 0

(*) Type 'U' starting Data Release 0519 – type 'C' until then

Notes: Country in-/exclusions for the same reference number may not contradict one another.

Country codes may not overlap. When, for instance, three records are delivered for one Article Number/OE Number combination with the inclusion set for 'EU', 'USA', and 'D', this will not be permissible since D (Germany) is a member of the EU and this was already specified as an inclusion.

Each *ArtNo* must be contained in the data table (-> 200).



All country codes for an Article/reference number combination must either be set as inclusion or as exclusion. The mixing of these specifications is not allowed.

The column *Sort* allow the sorting of the reference numbers (RefNo) below the Article-number (ArtNo). The DMM R2 / PMD R2 allocate the Sort-numbers automatic, when there's not given a specified sequence by the user.

The „Additive-Function“ allows to reference product-groups like repairing-sets (sealing kits) on single products (like head gasket).

The ReferenzInfo allows to further define an article reference, e.g. if an article differs in the scope of delivery from the part it refers to.

References to manufacturers represent OE numbers, provided that the manufacturer has set one of the flags PC, CV, Axle, Engie, Transmission, LCV in Table 100.

204 Superseding Articles

Source: Data Supplier

Contents:	The numbers of superseding articles
Max. Length:	61
Sorting:	ArtNo, SortNo, (CountryCode)
Primary Key:	ArtNo, SupersNo, (CountryCode)

Name	Old name	Pos	Length	Type	Description
ArtNo	<i>ArtNr</i>	000	22	U	Article Number in the data supplier format
BrandNo	<i>DLNr</i>	022	4	N	Data Supplier Number Constant
TableNo	<i>SA</i>	026	3	N	Data Table Constant « 204 »
CountryCode	<i>LKZ</i>	029	3	(C)	Country Code (-> 010)
SupersNo	<i>ErsatzNr</i>	032	22	U	Article <i>ArtNo</i> supersedes Article <i>SupersNo</i>
Exclude	<i>Exclude</i>	054	1	(N)	'1' = Country Code is an exclusion, '0' = Country Code is an inclusion.
SortNo	<i>Sort</i>	055	5	N	Display sequence of this record
DeleteFlag	<i>Lösch-Flag</i>	060	1	N	const = 0

(*) Type 'U' starting Data Release 0519 – type 'C' until then

Notes:

This data table is to be used when the current article number supersedes another article *SupersNo*. Both the superseding as well as the superseded articles must be contained in the data table (-> 200).

Country codes may not overlap. When, for instance, three records are delivered for one Article Number/Superseded Number combination with the inclusion set for 'EU', 'USA', and 'D', this will not be permissible since D (Germany) is a member of the EU and this was already specified as an inclusion.

Each *ArtNo* must be contained in the data table (-> 200).

All country codes for an Article/Superseded Number must either be set as inclusion or as exclusion. The mixing of these specifications is not allowed.

Recursion is not permitted (i.e. article A supersedes B, B supersedes C, C supersedes A).

The column *Sort* allow the sorting of the Trade-numbers (*TradeNo*) below the Article-number (*ArtNo*). The DMM R2 / PMD R2 allocate the Sort-numbers automatic, when there's not given a specified sequence by the user.



205 Parts Lists

Source: Data Supplier

Contents: Parts list information on articles
 Length: 63
 Sorting: ArtNo, SeqNo
 Primary Key: ArtNo, SeqNo

Name	Old name	Pos	Length	Type	Description
ArtNo	<i>ArtNr</i>	000	22	U	Article Number in the data supplier format
BrandNo	<i>DLNr</i>	022	4	N	Data Supplier Number Constant (Key 040)
TableNo	<i>SA</i>	026	3	N	Data Table Constant « 205 »
PartGenArtNo	<i>PartGenArtNr</i>	029	5	N	Unambiguous number of the Part-Generic Article
SeqNo	<i>LfdNr</i>	034	3	N	Sequential number for sorting
PartNo	<i>PartNr</i>	037	22	U	Relevant component part
Quantity	<i>Menge</i>	059	3	N	Quantity of component part
DeleteFlag	<i>Lösch-Flag</i>	062	1	N	const = 0

(*) Type 'U' starting Data Release 0519 – type 'C' until then

Notes: Describes what component parts *PartNo* makes up the main article *ArtNo*. Both article numbers must be contained in the DT 200. The component part may contain further parts lists, so that it may be contained again in the position *ArtNo* in the data table (-> 205). Interleaving is random, a recursion (i.e. article A contains article B, article B contains article C and article C again contains article A) is not permitted.

Country codes may not overlap. When, for instance, three records are delivered for one Article Number/Parts List Article combination with the inclusion set for 'EU', 'USA', and 'D', this will not be permissible since D (Germany) is a member of the EU and this was already specified as an inclusion.

Each ArtNo must be contained in the data table (-> 200).



All country codes for one Article/Parts List combination must either be set as inclusion or as exclusion. The mixing of these specifications is not allowed.

A further use of this table is to create **pseudo articles**, which are then linked to vehicles (or to other linkage targets). The components of a pseudo article should generally not be linked as single components, but may only be shown in context with the other components of the pseudo article. Two examples:

- A manufacturer offers motor oil in different package sizes and would like to present them clearly. He therefore defines a pseudo article "Oil XY 10W40" and add it as parts list components in table 205 the single package sizes which can be ordered. By linking the pseudo article to a vehicle, the package sizes do not have to be linked separately. If the manufacturer adds a further package size, it is already added automatically to all vehicles of the pseudo article. In this case, it could be that the 22 characters of the article number are not sufficient to describe the pseudo article. In this case the additional article description of the pseudo article should be used accordingly but the brand name should not be contained in the additional article description.
- A manufacturer of exhaust systems offers different exhaust pipes and fitting brackets for a vehicle, which may not be interchanged. The semantic is then "if the exhaust pipe 456.7 is used, only fitting bracket 123.4 fits". This case also requires that a pseudo article is defined the parts list of which lists the exhaust pipes and fitting brackets which can be used. The pseudo article is linked to a vehicle, the exhaust pipes and fitting brackets are not linked. This ensures that only compatible parts are shown with the vehicle. In this case, there is the possibility to add vehicle-specific attributes for a parts list component in table 208 (in the example for the exhaust pipe or for the fitting bracket). This may be necessary as the single part itself is not linked in table 400 (but only via its pseudo article).



206 Article Information

Source: Data Supplier

Contents: Information text for articles
 Max. Length: 51
 Sorting: ArtNo, SortNo, **CountryCode**
 Primary Key: ArtNo, SortNo, **CountryCode**

Name	Old name	Pos	Length	Type	Description
ArtNo	<i>ArtNr</i>	000	22	U	Article Number in the data supplier format
BrandNo	<i>DLNr</i>	022	4	N	Data Supplier Number Constant
TableNo	<i>SA</i>	026	3	N	Data Table Constant « 206 »
Reserved	<i>Reserved</i>	029	5		Former GenArtNr
CountryCode	<i>LKZ</i>	034	3	(C)	Country Code (-> 010)
SortNo	<i>SortNr</i>	037	2	N	Sorting for display
InfType	<i>InfArt</i>	039	3	N	Information Type (KT 072)
FirstPage	<i>AnzSofort</i>	042	1	N	Immediate Display = 1: Information is displayed on the 1 st article page on the presentation medium and is repeated boldly on the 2 nd page.
TXTModNo	<i>TBSNr</i>	043	6	C	Text Module Number (→ 035)
Exclude	<i>Exclude</i>	049	1	(N)	'1' = Country Code is an exclusion, '0' = Country Code is an inclusion.
DeleteFlag	<i>Lösch-Flag</i>	050	1	N	const = 0

(*) Type 'U' starting Data Release 0519 – type 'C' until then

Notes: Information texts on articles that could not be specified with criteria, (-> 210). The usage of the data table (-> 210) for such information is **always** preferred.

Only information that relates exclusively to the article, irrespective of what vehicle the article is linked to, may be specified here.



Text may be defined with different information types. The display sequence of the text with different information types is regulated by means of the *SortNr*.

Country codes may not overlap. When, for instance, three records are delivered for one Article/Sorting Number combination with the inclusion set for 'EU', 'USA', and 'D', this will not be permissible since D (Germany) is a member of the EU and this was already specified as an inclusion.

All country codes for one Article/Sort. No. combination must either be set as an inclusion or as exclusion. The mixing of these specifications is not allowed. Each article must be contained in the data table 200.

Primary Key change in Data Release 2223

This table is about text-modules on articles. If more than one text module is existing they are identified and sorted by a unique SortNo field entry.

In case a text module is valid for multiple countries, the record is repeated with different country codes (usual procedure in TecDoc tables).

Content of the table might look like this:

ArtNo	TextModule	SortNo	Country
0001	Txt_1	1	
0001	Txt_2	2	CountryCode_1
0001	Txt_2	2	CountryCode_2
0001	Txt_2	2	CountryCode_3
0002	Txt_3	1	
0003	Txt_4	1	CountryCode_1
0003	Txt_4	1	CountryCode_4



207 Trade Numbers

Source: Data Supplier

Contents: Trade Numbers
 Max. Length: 75
 Sorting: ArtNo, SortNo, (CountryCode)
 Primary Key: ArtNo, TradeNo, (CountryCode)

Name	Old name	Pos	Length	Type	Description
------	----------	-----	--------	------	-------------

ArtNo	<i>ArtNr</i>	000	22	U	Article Number in the data supplier format
BrandNo	<i>DLNr</i>	022	4	N	Data Supplier Number Constant
TableNo	<i>SA</i>	026	3	N	Data Table Constant « 207 »
CountryCode	<i>LKZ</i>	029	3	(C)	Country Code (-> 010)
TradeNo	<i>GebrNr</i>	032	35	U	Trade number of the article (short code)
Exclude	<i>Exclude</i>	067	1	(N)	'1' = Country Code is an exclusion, '0' = Country Code is an inclusion.
FirstPage	<i>AnzSofort</i>	068	1	(N)	0 = Trade number is only shown on the 2 nd article page, 1 = Trade number is shown on the 1 st article page.
SortNo	<i>Sort</i>	069	5	N	Display sequence of this record
DeleteFlag	<i>Lösch-Flag</i>	074	1	N	const = 0

(*) Type 'U' starting Data Release 0519 – type 'C' until then

Notes: Entry of generally accepted trade numbers (short codes) for the articles *ArtNo* that must be contained in the data table (-> 200). This number can be used to search for the article in the parts catalogue.
 Trade numbers should not be duplicated for one article within one country.
 Country codes may not overlap. When, for instance, three records are delivered for one Article Number/Trade Number combination with the inclusion set for 'EU', 'USA', and 'D', this will not be permissible since D (Germany) is a member of the EU and this was already specified as an inclusion.



All country codes for one Article/Trade Number combination must either be set as an inclusion or as exclusion. The mixing of these specifications is not allowed. Each article must be contained in the data table 200.

The column *Sort* allow the sorting of the Trade-numbers (TradeNo) below the Article-number (ArtNo). The DMM R2 / PMD R2 allocate the Sort-numbers automatic, when there's not given a specified sequence by the user.



208 Parts List Criteria

Source: Data Supplier

Contents: Criteria for component parts in a parts list
 Max. Length: 69
 Sorting: ArtNo, SeqNo1, SeqNo, SortNo
 Primary Key: ArtNo, SeqNo1, SeqNo, SortNo

Name	Old name	Pos	Length	Type	Description
ArtNo	<i>ArtNr</i>	000	22	U	Article Number in the data supplier format
BrandNo	<i>DLNr</i>	022	4	N	Data Supplier Number Constant (Key 040)
TableNo	<i>SA</i>	026	3	N	Data Table Constant « 208 »
Reserved	<i>Reserved</i>	029	3		Former CountryCode
SeqNo	<i>LfdNr</i>	032	5	N	Sequential Number
SortNo	<i>SortNr</i>	037	3	N	Sorting Order
CritNo	<i>KritNr</i>	040	4	N	Criterion Number (Key 050)
CritVal	<i>KritWert</i>	044	20	C	Criterion Value
Reserved	<i>Reserved</i>	064	1		Former "Exclude"
SeqNo1	<i>LfdNr1</i>	065	3	N	LfdNr from DT205
DeleteFlag	<i>Lösch-Flag</i>	068	1	N	const = 0

(*) Type 'U' starting Data Release 0519 – type 'C' until then

Note: The combination *ArtNo* and *SeqNo1* must be contained in the DT205.

209 GTIN

Source: Data Supplier

Contents: GTIN (Global Trade Item Number)
 Max. Length: **48**
 Sorting: ArtNo, GTIN, (CountryCode)
 Primary Key: ArtNo, GTIN, (CountryCode)

Name	Old name	Pos	Length	Type	Description
ArtNo	<i>ArtNr</i>	000	22	U	Article Number in the data supplier format
BrandNo	<i>DLNr</i>	022	4	N	Data Supplier Number Constant
TableNo	<i>SA</i>	026	3	N	Data Table Constant « 209 »
CountryCode	<i>LKZ</i>	029	3	(C)	Country Code (-> 010)
GTIN	<i>GTIN</i>	032	14	C	GTIN of articles (**)
Exclude	<i>Exclude</i>	046	1	(N)	'1' = Country Code is an exclusion, '0' = Country Code is an inclusion.
DeleteFlag	<i>Lösch-Flag</i>	047	1	N	const = 0

(*) Type 'U' starting Data Release 0519 – type 'C' until then

() This has been changed from Type 'N' to 'C' in documentation. Technically the GTIN is a character string including numeric characters or leading blank characters. The GTIN field is always right aligned (8,12,13,14 digits) and filled with leading blank characters. Please note that this is just an editorial change to avoid future misunderstandings that reflects the already existing long-standing practice.**

Notes:

Entry of generally accepted GTIN for the articles *ArtNo* which must be contained in the data table (-> 200). This number can be used to search for the article in the parts catalogue.

GTIN should not be duplicated for one article. **A GTIN may have 8, 12, 13 or 14 digits.** Further details can be found at <https://www.gs1.org/standards/id-keys/gtin>

Leading '0' must not be ignored. Otherwise the result in general is not valid.



Country codes may not overlap. When, for instance, three records are delivered for one Article/GTIN combination with the inclusion set for 'EU', 'USA', and 'D', this will not be permissible since D (Germany) is a member of the EU and this was already specified as an inclusion.

All country codes for one Article/GTIN combination must either be set as inclusion or as exclusion. The mixing of these specifications is not allowed.

Each *ArtNo* must be contained in the data table (-> 200).

210 Article Criteria

Source: Data Supplier

Contents: Fixed article criteria that are not related to vehicle links
 Max. Length: 67
 Sorting: ArtNo, SortNo
 Primary Key: ArtNo, SortNo

Name	Old name	Pos	Length	Type	Description
ArtNo	<i>ArtNr</i>	000	22	U	Article Number in the data supplier format
BrandNo	<i>DLNr</i>	022	4	N	Data Supplier Number Constant
TableNo	<i>SA</i>	026	3	N	Data Table Constant « 210 »
Reserved	<i>Reserved</i>	029	5		Former GenArtNr
CountryCode	<i>LKZ</i>	034	3	(C)	Country Code (Key 010)
SortNo	<i>SortNr</i>	037	3	N	Display Sequence
CritNo	<i>KritNr</i>	040	4	N	Criterion Number (-> 050)
CritVal	<i>KritWert</i>	044	20	C	Criterion Value
FirstPage ¹	<i>AnzSofort¹</i>	064	1	N	Immediate Display = '1', otherwise '0'
Exclude	<i>Exclude</i>	065	1	(N)	'1' = Country Code is an exclusion, '0' = Country Code is an inclusion.
DeleteFlag	<i>Lösch-Flag</i>	066	1	N	const = 0

(*) Type 'U' starting Data Release 0519 – type 'C' until then

Notes: Entry of explanatory criteria for an article *ArtNo* that must be contained in the data table (-> 200).

Country codes may not overlap. When, for instance, three records are delivered for one Article/Criteria combination with the inclusion set for 'EU', 'USA', and 'D', this will not be permissible since D (Germany) is a member of the EU and this was already specified as an inclusion.



All country codes for an Article must either be set as inclusion or as exclusion. The mixing of these specifications is not allowed.

Criteria may be used more than once within one country, but may then not contain identical values.

Only criteria that are allowed for (-> 210) may be used (OK-Article = 1, -> 050).

¹Criteria with this code are displayed immediately on the first article page in the presentation system, (Article Overview window).

211 Article to Generic Article Allocation

Source: Data Supplier

Contents: Allocation of generic articles to data supplier article numbers
Length: 35
Sorting: ArtNo, GenArtNo
Key: ArtNo, GenArtNo

Name	Old name	Pos	Length	Type	Description
ArtNo	<i>ArtNr</i>	000	22	U	Article Number in the data supplier format
BrandNo	<i>DLNr</i>	022	4	N	Data Supplier Number Constant
TableNo	<i>SA</i>	026	3	N	Data Table Constant 211
GenArtNo	<i>GenArtNr</i>	029	5	N	Unambiguous number of the generic article (->320)
DeleteFlag	<i>Lösch-Flag</i>	034	1	N	const = 0

(*) Type 'U' starting Data Release 0519 – type 'C' until then

Notes: Note: Each article has at least one generic article associated with it.

If more than one generic article is assigned to an article, these generic articles must have the same standard name (320.NArtNo).



212 Country-Specific Article-data

Source: Data Supplier

Contents: Country-Specific Article-data
 Length: 54
 Sorting: ArtNo, CountryCode
 Key: ArtNo, CountryCode

Name	Old name	Pos	Length	Type	Description
ArtNo	<i>ArtNr</i>	000	22	U	Article Number in the data supplier's format
BrandNo	<i>DLNr</i>	022	4	N	Data Supplier Number Constant
TableNo	<i>SA</i>	026	3	N	Data Table Constant 212
CountryCode	<i>LKZ</i>	029	3	(C)	Country Code (Key 010)
QuantUnit	<i>VPE</i>	032	5	(N)	Packing unit (quantity per package)
QuantPerUnit	<i>MengeProVPE</i>	037	5	(N)	Quantity /part per unit
ArtStat	<i>ArtStat</i>	042	3	(N)	Article Status (KT 073)
StatusDat	<i>StatusDat</i>	045	8	(N)	Article status valid from YYYYMMDD
DeleteFlag	<i>Lösch-Flag</i>	053	1	N	const = 0

(*) Type 'U' starting Data Release 0519 – type 'C' until then

Notes:

- The field *CountryCode* must be filled with a correct Country Code (a blank is allowed for "worldwide").
- If the field *QuantPerUnit* is filled, the field *QuantUnit* must be filled, too.
- If the field *StatusDat* is filled, the field *ArtStat* must be filled, too.
- If the fields *QuantUnit* and/or *ArtStat* are filled, it is not imperative to fill the fields *QuantPerUnit* and/or *StatusDat* too, but it is strongly recommended
- Every article should have an article-status in table 212 (Country-Specific Article-data). Article-numbers, without any article-status in table 212, will get the default article-status 1 (Normal-status) per DVM (Data Validation Modul).



215 Parts Lists Country Restrictions

Source: Data Supplier

Contents: Country restrictions for parts lists information
 Length: 37
 Sorting: ArtNo, SeqNo, CountryCode
 Primary Key: ArtNo, SeqNo, CountryCode

Name	Old name	Pos	Length	Type	Description
ArtNo	<i>ArtNr</i>	000	22	U	Article Number in the data supplier format
BrandNo	<i>DLNr</i>	022	4	N	Data Supplier Number Constant (Key 040)
TableNo	<i>SA</i>	026	3	N	Data Table Constant « 215 »
SeqNo	<i>LfdNr</i>	029	3	N	Sequential number from DT205
CountryCode	<i>LKZ</i>	032	3	C	Country Code (Key 010)
Exclude	<i>Exclude</i>	035	1	N	'1' = Country Code is an exclusion, '0' = Country Code is an inclusion.
DeleteFlag	<i>Lösch-Flag</i>	036	1	N	const = 0

(*) Type 'U' starting Data Release 0519 – type 'C' until then

Notes: Country codes may not overlap.

All country codes for an Artikel/LangNo/SortNr combination must be set either as an inclusion or as an exclusion. Mixing the both is not allowed.



217 Allocation of Parts-List-Coordinates to Context-sensitive Graphics

Source: Data Supplier

Content: The allocation of coordinates to context-sensitive graphics
 Length: 51
 Sorting: ArtNo, SeqNo, DocNo, DocType, LangNo
 Primary Key: ArtNo, SeqNo, DocNo, DocType, LangNo

Name	Old name	Pos	Length	Type	Meaning
ArtNo	<i>ArtNr</i>	000	22	U	Article Number in the data supplier format
BrandNo	<i>DLNr</i>	022	4	N	Data Supplier Number (040)
TableNo	<i>SA</i>	026	3	N	Constant '217'
SeqNo	<i>LfdNr</i>	029	3	N	Sequential Number from DT 205
DocNo	<i>BildNr</i>	032	9	N	Unambiguous Graphics Number ($\geq 100.000 * \text{DatSupNo.}$, $< 100.000 * (\text{DatSupNo.} + 1)$)
DocType	<i>DokumentenAr t</i>	041	2	N	Document Type (014)
LangNo	<i>LangNo</i>	043	3	N	Language Number (Key 020)
CoordNo	<i>KoordinatenNr</i>	046	4	N	Coordinate Number
DeleteFlag	<i>Lösch-Flag</i>	050	1	N	const = 0

ArtNo, SeqNo -> must be contained in the DT 205.

DocNo, DocType, LangNo, CoordNo must be contained in the DT 233.

222 Accessory Lists

Source: Data Supplier

Contents: Accessories information for articles
 Max. Length: 83
 Sorting: ArtNo, SeqNo, SortNo
 Primary Key: ArtNo, SeqNo, SortNo

Name	Old name	Pos	Length	Type	Description
ArtNo	<i>ArtNr</i>	000	22	U	Article Number in the data supplier format
BrandNo	<i>DLNr</i>	022	4	N	Data Supplier Number Constant (Key 040)
TableNo	<i>SA</i>	026	3	N	Data Table Constant « 222 »
LnkType	<i>VKN_ART</i>	029	1	(N)	Type of linkage (Vehicle Manufacturer, Model Series, PC, CV, Engine Manufacturer, Engine)
LnkVal	<i>VKN_Value</i>	030	6	(N)	HerNr, KModNr, KTypNr, NTypNr or MotNr
SeqNo	<i>LfdNr</i>	036	3	N	Sequential Number
SortNo	<i>SortNr</i>	039	3	N	Sorting Number
AccArtNo	<i>ZArtNr</i>	042	22	U	Relevant accessory part, must be contained in the DT 200, KZZub must be '1'
Quantity	<i>Menge</i>	064	3	N	Quantity of accessory parts required
AccGenArtNo	<i>ZubGenArtNr</i>	067	5	N	Unambiguous number of the accessory generic article (-> SA320)
Reserved	<i>Reserviert</i>	072	1		Previously Exclude, became obsolete because of the deletion of table 225
TermNo	<i>BezNr</i>	073	9	(N)	Description Number (->030)
DeleteFlag	<i>Lösch-Flag</i>	082	1	N	const = 0

(*) Type 'U' starting Data Release 0519 – type 'C' until then

LnkType:
 1 = ManNo
 2 = KModNo
 3 = KTypNo
 4 = NTypNo
 5 = EngNo



228 Accessory Lists Criteria

Source: Data Supplier

Contents: Criteria for the individual parts of an accessory list
 Max. Length: 67
 Sorting: ArtNo, SeqNo1, SortNo1, SeqNo
 Primary Key: ArtNo, SeqNo1, SortNo1, SeqNo

Name	Old name	Pos	Length	Type	Description
ArtNo	<i>ArtNr</i>	000	22	U	Article Number in the data supplier format
BrandNo	<i>DLNr</i>	022	4	N	Data Supplier Number Constant (Key 040)
TableNo	<i>SA</i>	026	3	N	Data Table Constant « 228 »
CountryCode	<i>LKZ</i>	029	3	(C)	Country Code (Key 010)
SeqNo1	<i>LfdNr1</i>	032	3	N	LfdNr from DT222
SortNo1	<i>SortNr1</i>	035	3	N	Sorting Order
SeqNo	<i>LfdNr</i>	038	3	N	Sequential number for the accessory list criterion
CritNo	<i>KritNr</i>	041	4	N	Criterion Number (Key 050)
CritVal	<i>KritWert</i>	045	20	C	Criterion Value
Exclude	<i>Exclude</i>	065	1	(N)	'1' = Country Code is an exclusion, '0' = Country Code is an inclusion.
DeleteFlag	<i>Lösch-Flag</i>	066	1	N	const = 0

(*) Type 'U' starting Data Release 0519 – type 'C' until then

Notes: When LnkType 3, 4 or 5 is used in table 222 the criteria 2, 14, or 16 must not be used in table 228 (Equals exclude one another!)

When the LnkType 3 (PC) is used in table 222, the criterion 16 must not be used in table 228.

When the LnkType 4 (CV) is used in table 222, the criterion 2 must not be used in table 228.

Criterion 2 = PC

Criterion 16 = CV

Criterion 14 = Engine

231 Graphics / Documents

Source: Data Supplier

Contents: The allocation of graphics/documents to picture numbers
 Length: 400
 Sorting: DocNo, DocType, LangNo
 Primary Key: DocNo, DocType, LangNo

Name	Old name	Pos	Length	Type	Description
Reserved	<i>Reserviert</i>	000	22	C	Constantly blank
BrandNo	<i>DLNr</i>	022	4	N	Data Supplier Number Constant (Key 040)
TableNo	<i>SA</i>	026	3	N	Data Table Constant= 231
DocNo	<i>BildNr</i>	029	9	N	Unambiguous Picture Number ($\geq 100.000 * \text{BrandNo}$, $< 100.000 * (\text{BrandNo} + 1)$)
LangNo	<i>LangNo</i>	038	3	N	Language Number (Key 020)
DocName	<i>Bildname</i>	041	30	(U)	Graphic file name without extension (**)
DocContentType	<i>BildType</i>	071	3	N	(KT 143) Article, Vehicle, etc
DocTermNorm	<i>BezNorm</i>	074	3	N	(KT 141) Standardised Graphic Header
Width	<i>Breit</i>	077	4	(N)	Graphic width
Height	<i>Hoch</i>	081	4	(N)	Graphic height
Colors	<i>Farben</i>	085	3	(N)	Colour Quantity
DocType	<i>DokumentenArt</i>	88	2	N	-> DT014.
TermNo	<i>BezNr</i>	090	9	(N)	Description -> DT 030
DeleteFlag	<i>Lösch-Flag</i>	099	1	N	const = 0
URL	<i>URL</i>	100	300	(C)	URL to which the link is made. Only if DokumentenArt = URL



(* Type 'U' starting Data Release 0519 – type 'C' until then

Notes : Each DocNo/DocType – combination must contain a data record with the language number 255 (Universal); this will be displayed for languages that are not covered by the delivered languages. The documents have to correspond to a document type in data table 014. Currently allowed are BMP, PDF, JPG, PNG, GIF and URL. The image name has to be stated with the document types BMP, PDF, PNG, GIF and JPG; the URL has to be stated with the document type URL.

(**)

Characters used in filenames should be limited to these latin characters: 0 - 9, a - z, A-Z, !_-'()

Please note that TecDoc is not working case sensitive for filenames at all.

Rules for picture files of JPG, PNG and BMP type (starting November 2021)

The maximum permitted size for pictures is 2500 x 2500 Pixel.

The size of the image files must not exceed 400 kB

Watermarks are not recommended as not well accepted by data users

Extended rules for the document type "URL"

We offer the possibility to make documents (!) available to the market not only as files via the distribution platform but alternatively as a link (URL) to such documents.

For this purpose, we have integrated a new document type "URL" into the format and equipped the DMM R2 / PMD R2 accordingly.

The entire TecAlliance catalog data exchange format is designed to exchange documents that can be displayed in catalogs. Information on image type and standardized caption can be used to transmit documents for different applications (image, installation instructions, safety data sheet, etc.).

The same applies to documents of the document type URL: Documents must be linked that correspond to one of the use cases defined by the exchange format.

The following rules apply to this document type:

- The link must contain a valid URI according to RFC 39865
- Allowed network protocols are http and https
- The link must point to a document with one of the following file types:
BMP, JPG, JPEG, PNG, GIF, PDF, M4A, MP4, MPG, MPEG, AVI
Please note that TecDoc is not working case sensitive for filenames at all.
- Also allowed are references to YouTube videos. The links must begin with the following string:
<https://www.youtube.com/embed/>
or
<https://www.youtube-nocookie.com/embed/>
Please note that YouTube links are not available in some regions of the world.



- Further URL prefixes (analogous to YouTube) can be requested from the TecAlliance for use, provided that they obey the above rules and are used exclusively (!) for the reproduction of media content.

Enhanced rules for document type "GIF" (from June 2018)

The document type "GIF" is to be used to transport simple animations, for example to display simple panoramic views of a spare part in a catalog.

For the first time, there is a file size limit for this document type. (*)

Extended rules for the document type "ZIP" (360° product images) (not supported)

This section has been removed from the documentation, as this information is exchanged via a separate channel.

The TecDoc data maintenance software DMM/PMD is not used. The documents are not part of the regular data packages.

Annotation on the use of Watermarks

The use of watermarks on images and drawings is not appreciated by the operators of stores and catalogues.

The use of watermarks could therefore lead to these product describing components not being displayed.

We therefore recommend only to provide images, drawings and other documents without watermarks.

Company Logo files ...

... are restricted to the filetypes JPG and PNG.

232 Allocation of Graphics to Article Numbers

Source: Data Supplier

Contents: The allocation of graphics to article numbers
 Length: 47
 Sorting: ArtNo, SortNo, **CountryCode**
 Primary Key: ArtNo, SortNo, **CountryCode**

Name	Old Name	Pos	Length	Type	Description
ArtNo	<i>ArtNr</i>	000	22	U	Article Number in the data supplier format
BrandNo	<i>DLNr</i>	022	4	N	Data Supplier Number Constant (Key 040)
TableNo	<i>SA</i>	026	3	N	Data Table Constant « 232 »
SortNo	<i>SortNr</i>	029	2	N	Sequential sorting number for graphics that belong to the same article, starting with 1 per article. Used to determine the order of display.
CountryCode	<i>LKZ</i>	031	3	(C)	Country Code (Key 010)
Exclude	<i>Exclude</i>	034	1	(N)	'1' = Country Code is an exclusion, '0' = Country Code is an inclusion.
DocNo	<i>BildNr</i>	035	9	N	Unambiguous Graphics Number (->231)
DocType	<i>DokumentenArt</i>	044	2	N	Document Type (-> 014)
DeleteFlag	<i>Lösch-Flag</i>	046	1	N	const = 0

(*) Type 'U' starting Data Release 0519 – type 'C' until then

Notes: Multiple graphics are allowed for each article. One graphic can also be used by more than one article.

The combination DocNo, DocType must be contained in the DT231.

The DocNo must be contained in the DT 231 and have the DocType 'Article' there.

When multiple Graphics are linked to one article we recommend to use the same colour palette!



Primary Key change in Data Release 2223

This table is about asset files allocated to articles. If more than one asset is existing they are identified and sorted by a unique SortNo field entry.

In case an asset file is valid for multiple countries, the record is repeated with different country codes (usual procedure in TecDoc tables).

Content of the table might look like this:

ArtNo	AssetFile	SortNo	Country
0001	file_1	1	
0001	file_2	2	CountryCode_1
0001	file_2	2	CountryCode_2
0001	file_2	2	CountryCode_3
0002	file_3	1	
0003	file_4	1	CountryCode_1
0003	file_4	1	CountryCode_4

233 Context Sensitive Graphics

Source: Data Supplier

Contents: Context sensitive graphics
 Length: 46
 Sorting: DocNo, DocType, CoordNo , SeqNo
 Primary Key: DocNo, DocType, CoordNo , SeqNo

Name	Old name	Pos	Length	Type	Description
BrandNo	<i>DLNr</i>	000	4	N	Data Supplier Number Constant (040)
TableNo	<i>SA</i>	004	3	N	Data Table Constant "233"
DocNo	<i>BildNr</i>	007	9	N	Unambiguous Graphic Number ($\geq 100.000 * \text{DatSupNo.}$, $< 100.000 * (\text{DatSupNo.} + 1)$)
DocType	<i>DokumentenArt</i>	016	2	N	Document Type (014)
CoordNo	<i>KoordinatenNr</i>	018	4	N	Coordinate number
SeqNo	<i>LfdNr</i>	022	3	N	Sequential number when more than one Coordinate Number
LangNo	<i>LangNo</i>	025	3	N	Language Number (020)
Type	<i>Typ</i>	028	1	N	0=Circle, 1=Square
X1	<i>X1</i>	029	4	N	X-Coordinate centre of the circle / 1. point of the square
Y1	<i>Y1</i>	033	4	N	Y-Coordinate centre of the circle / 1. point of the square
X2	<i>X2</i>	037	4	N	Radius of the circle / X-Coordinate 2. point of the square
Y2	<i>Y2</i>	041	4	(N)	Y-Coordinate 2. point of the square
DeleteFlag	<i>Lösch-Flag</i>	045	1	N	const = 0

Notes: Origin is always left top. When Type = 1, then Y2 is a mandatory field!
 Country restrictions for the whole graphic can be entered in DT 232.
 The usage of "DokumentenArt" URL is not permitted (-> DT 014)



Logistics Data Tables

213 Article Criteria (Logistics) ... New table in format version 2.5

Source: Data Supplier

Contents: Fixed logistics article criteria that are not related to vehicle links
 Max. Length: 61
 Sorting: ArtNo, SortNo
 Primary Key: ArtNo, SortNo

Name	Old name	Pos	Length	Type	Description
ArtNo	<i>ArtNr</i>	000	22	U	Article Number in the data supplier format
BrandNo	<i>DLNr</i>	022	4	N	Data Supplier Number Constant
TableNo	<i>SA</i>	026	3	N	Data Table Constant « 213 »
CountryCode	<i>LKZ</i>	029	3	(C)	Country Code (Key 010)
SortNo	<i>SortNr</i>	032	3	N	Display Sequence
CritNo	<i>KritNr</i>	035	4	N	Criterion Number (-> 053)
CritVal	<i>KritWert</i>	039	20	C	Criterion Value
FirstPage ¹	<i>AnzSofort¹</i>	059	1	N	Immediate Display = '1', otherwise '0'
Exclude	<i>Exclude</i>	060	1	(N)	'1' = Country Code is an exclusion, '0' = Country Code is an inclusion.

Notes: Entry of explanatory logistics criteria for an article *ArtNo* that must be contained in the data table (-> 200).

Country codes may not overlap. When, for instance, three records are delivered for one Article/Criteria combination with the inclusion set for 'EU', 'USA', and 'D', this will not be permissible since D (Germany) is a member of the EU and this was already specified as an inclusion.

All country codes for an Article must either be set as inclusion or as exclusion. The mixing of these specifications is not allowed.

Logistics criteria may be used more than once within one country, but may then not contain identical values.

Only logistics criteria that are allowed for (-> 210) may be used (OK-Article = 1, -> 050L).

¹Logistics criteria with this code are displayed immediately on the first article page in the presentation system, (Article Overview window).

214 Article Packaging Items ... New table in format version 2.6

Temporarily not supported – measurements are part of logistics criteria

Definition:

This table contains all packaging objects in the entire packaging hierarchy that are used to transport or store the end user units as given in the basic article table 200. All packaging information given in table 200 is only describing this end user unit.

The *Article Packaging Items* table 214 therefore always contains one or more objects of either the end user unit (200.ArtNo) or another entry from table 214 in order to build a complete hierarchy from cardboard box up to a pallet.

Source: Data Supplier

Contents:	Packaging hierarchy incl. measurements and weight (shipping unit)
Max. Length:	122
Sorting:	PackArtNo
Primary Key:	PackArtNo

Name	Pos	Length	Type	Description
PackArtNo	000	22	U	Article Number in the data supplier format
BrandNo	022	4	N	Data Supplier Number Constant
TableNo	026	3	N	Data Table Constant « 214 »
PackGTIN	029	14	(N)	Package Level GTIN
Amount	043	6	N	Amount of objects of next lower level in package
InclArtNo	049	22	U	Article Number (-> 200) of end user unit. Should be provided on every packaging level.
InclPackArtNo	071	22	(U)	Packaging Article Number (->214). Mandatory if item contains another packaging item (e.g. a pallet that contains cardboard boxes) (*)
PackHeight	093	4	N	Shipping Height of package [mm] (*)
PackWidth	097	4	N	Shipping Width of package [mm] (*)
PackDepth	101	4	N	Shipping depth of package [mm] (*)

PackWeight	105	9	N	Gross weight of unit[g]
PackWeightVar	114	2	N	Possible variance in units gross weight in [%]
StackingFactor	116	3	N	Maximum levels the package may be stacked in storage
PackagingType	119	3	C	Type of packaging according to Key Table 739

(*)

Example for a packaging hierarchy

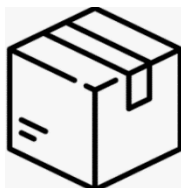
End User Unit



200.ArtNo = 1234

...

Transport Packaging



214.PackArtNo = 2345

214.amount = 50 (**)

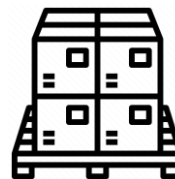
214.InclArtNo = 1234

214.InclPackArtNo = Null

...

214.PackagingType = 'CT'

Transport Packaging



214.PackArtNo = 3456

214.Amount = 8

214.InclArtNo = 1234

214.InclPackArtNo = 2345

...

214.PackagingType = 'PX'

(**) 50 jerricans are packed into a cardboard box.

(*) Rules for measuring a transport package

To measure a product package you need to put the product on its natural base and then identify the default front of the item.:

- **For packaging/transport units:**

Put the item on its "natural base" what is the natural underside of the packaged item pre-shipping. If any markings on the package point to natural base orientation, they take precedence in determining the Natural Base. "Markings" can be text, arrows or other graphics printed on the item that may indicate a top or bottom orientation. After you have put the item to its natural base the measurements are given as



follows:

- Height:** from the base to the top
- Width:** the shorter side of the natural base
- Depth:** the longer side of the natural base

If it is not possible to identify a "Natural Base" the following measurement rules are given:

- Height:** the shortest dimension
- Width:** the next longest dimension
- Depth:** the longest dimension

For completeness the basic measurement rule for end user units is given here as well (needs to be considered for logistics article measurement attributes in used in table 213):

- **For end user units:**

The surface with markings such as the product name and standard text elements such as Consumer Declaration. This is the surface that is presented to the customer e.g. in a shelf in the store. After you identified the front, the measurements are given as follows:

- Height:** from the base to the top
- Width:** from the left to the right
- Depth:** from the front to the back

Rules and constraints

PackArtNo	If only a GTIN exists and no (internal) article number, the GTIN is as well given in the field "PackArtNo"
PackHeight PackWidth PackDepth	A numeric value specifying the dimension in [mm]. No decimal places Regular Expression: [\d]{1,4}
PackWeigth	A numeric value specifying the weight in [g]. No decimal places Regular Expression: [\d]{1,9}
PackWeightVar	A numeric value specifying the variance in [%]. No decimal places Regular Expression: [\d]{1,2}
StackingFactor	A numeric value specifying the stacking factor. No decimal places Regular Expression: [\d]{1,}

216 Article Packaging Items – Country Restrictions ... New table in format version 2.6

Temporarily not supported – measurements are part of logistics criteria

Definition:

This table contains information if a packaging unit as specified in table 214 is restricted to certain countries.

Source: Data Supplier

Contents: Packaging units country restrictions (optional)
Max. Length: 32
Sorting: PackArtNo, CountryCode
Primary Key: PackArtNo, CountryCode

Name	Pos	Length	Type	Description
PackArtNo	000	22	U	Article Number in the data supplier format (-> 214)
BrandNo	022	4	N	Data Supplier Number Constant
TableNo	026	3	N	Data Table Constant « 216 »
CountryCode	029	3	C	Country Code (-> 010)

Please note that no "Exclude" flag is given anymore. Countries always are provided as list of valid countries for a specific Packaging Item. If no limitation is given the Packaging Item is valid in the same countries as the end user unit (article as given in table 200).

218 Packaging Items Lot Sizes ... New table in format version 2.6

Temporarily not supported.

Definition:

This table contains information about the number of packaging items that is typically shipped to customers. This amount can be given as a general information (format 2.6) or for specific customers (later version).

Source: Data Supplier

Contents: Packaging units lot sizes (optional)
 Max. Length: 034 (*)
 Sorting: ItemNo(, RecipientID) (*)
 Primary Key: ItemNo(, RecipientID) (*)

Name	Pos	Length	Type	Description
ItemNo	000	22	U	Article Number in the data supplier format (-> 200/214)
ArtSwitch	022	1	C	0: end user unit (->200) ; 1: packing unit (-> 214)
BrandNo	023	4	N	Data Supplier Number Constant
TableNo	027	3	N	Data Table Constant « 218 »
LotSize	030	4	N	Amount of units specified by <i>PackArtNo</i>
RecipientID	034	4	(C)	Just for distribution control – for future use

(*)If this field is missing, the data record just contains one entry per packaging item for the standard lot size for the packaging item – if any exists. It is a mid term objective to make this information partly non-public what means that supplier can provide information for specific recipients, e.g. special delivery options for single wholesalers. Any projects with Data Supplier will be announced to the Data Users affected in due time.

Annotation:

A standard lotsize can either be defined based on the end user unit what then refers to entry in article table 200. It can as well be given based on an existing packaging unit as soon as the specific lot size is provided via several items of a package item. In this case *ItemNo* refers to a table 214 entry.

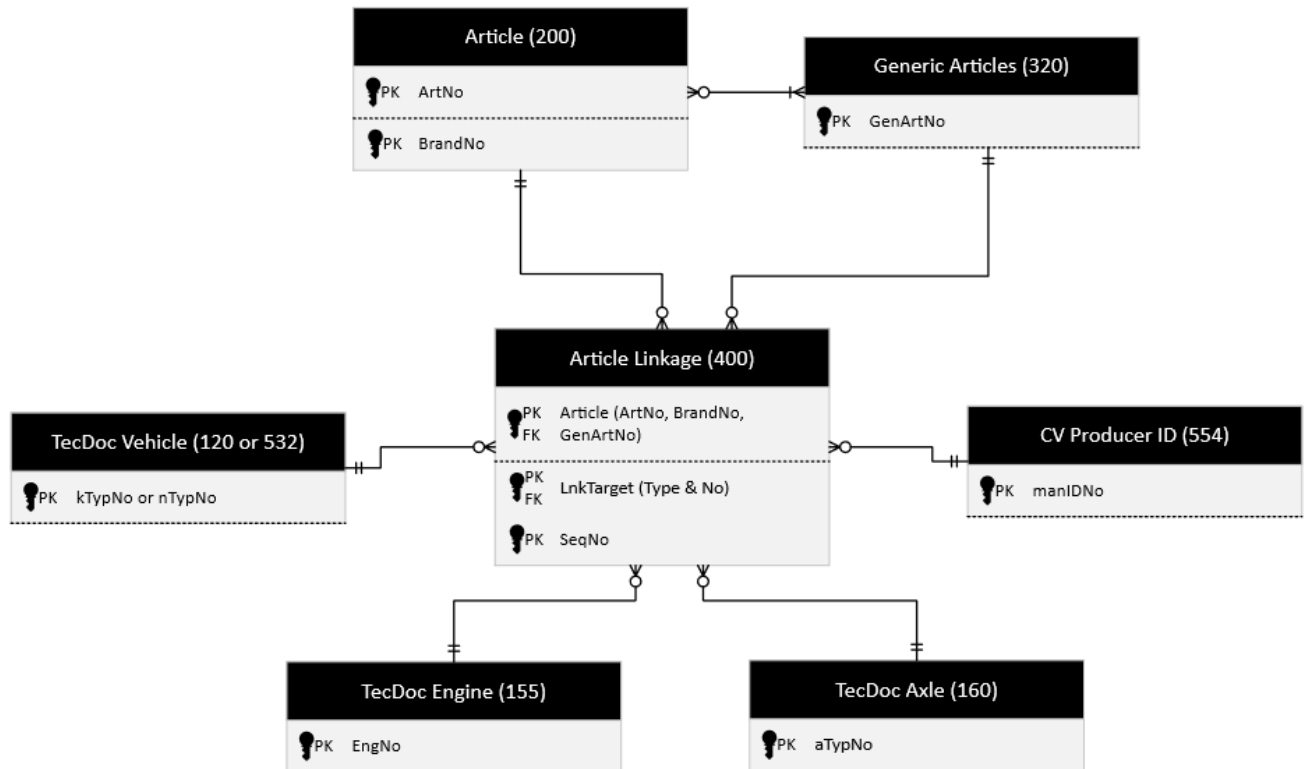
Linkage Data Tables

Linkages are the main information object of the TecDoc data. They are linking the products to the vehicles or vehicle components (axles, engines). So the basic linkage object just consists of foreign keys to:

- Article
- Generic Article
- Linkage Target, either
 - o Passenger Car (120)
 - o CV (532)
 - o Engine (155)
 - o Axle (160)
 - o CV Producer ID (554)

In addition, the Primary Key of a linkage includes a Sequence Number (SeqNo) to enable multiple linkages of same product to same linkage target in order to specify different criteria (e.g. for different vehicle construction periods).

Article Number and Generic Article number must match, what means that both numbers must be allocated in table 211.



400 Article Linkage

Source: Data Supplier

Contents: Linkage of the articles with linkage targets
 Length: 56
 Sorting: LnkTargetType, LnkTargetNo, GenArtNo, ArtNo, SeqNo
 Primary Key: LnkTargetType, LnkTargetNo, GenArtNo, ArtNo, SeqNo

Name	Old name	Pos	Length	Type	Description
ArtNo	<i>ArtNr</i>	000	22	U	Article Number in the data supplier format
BrandNo	<i>DLNr</i>	022	4	N	Data Supplier Number Constant (Key 040)
TableNo	<i>SA</i>	026	3	N	Data Table Constant '400'
GenArtNo	<i>GenArtNr</i>	029	5	N	Unambiguous number of the generic article (->320)
LnkTargetType	<i>VknZielArt</i>	034	3	N	Type of the linkage target (PC, CV, engine, ...)
LnkTargetNo	<i>VknZielNr</i>	037	9	N	Number of the linkage target (KTypNo, NTypNo, EngNo, ManIDNo, ...)
SeqNo	<i>LfdNr</i>	046	9	N	Sequential number within the ArtNo-GenArtNo-LnkTargetNo-linkage
DeleteFlag	<i>Lösch-Flag</i>	055	1	N	const = 0

(*) Type 'U' starting Data Release 0519 – type 'C' until then

Notes: Linkage of an article *ArtNr*, that is contained in the data table (-> 200), with a generic article and vehicle as well as criteria. The combination Article Number and Generic Article Number must be contained in the data table (-> 211).

There is one data record per linkage in this data table.

In the key table 271 for the linkage target types, the current criteria number which expressed a linkage since the format version 2.2 remained: (2 = PC-Ktype-No, 7 = ManID-No, 14 = EngineNo, 16 = CV-Type-No, 19 = Axle-Type-No). Therefore, no conversion of the values has to take place when making a format conversion.



Linkages of the same article with the same vehicle and the same generic article must differ in any relevant point.

Valid differences are:

- Article description (-> 200)
- Additional article description (-> 200)
- Article criteria set to immediate display (-> 210)
- Article information set to immediate display (-> 206)
- Linkage criteria set to immediate display (-> 400)
- Linkage information set to immediate display (-> 401)

If an article with the same generic article is linked more than once to the same linkage target, the LfdNr will determine the display sequence of these linkages.

401 Search Information Texts

Source: Data Supplier

Contents: Search menu dependent information texts
 Max. Length: 72
 Sorting: LnkTargetType, LnkTargetNo, GenArtNo, ArtNo, SeqNo, SortNo, **CountryCode**
 Primary Key: LnkTargetType, LnkTargetNo, GenArtNo, ArtNo, SeqNo, SortNo, **CountryCode**

Name	Old name	Pos	Length	Type	Description
ArtNo	<i>ArtNr</i>	000	22	U	Article Number in the data supplier format
BrandNo	<i>DLNr</i>	022	4	N	Data Supplier Number Constant
TableNo	<i>SA</i>	026	3	N	Data Table Constant "401"
GenArtNo	<i>GenArtNr</i>	029	5	N	Unambiguous number of the Generic Article (->320)
LnkTargetType	<i>VknZielArt</i>	034	3	N	Type of the linkage target (PC, CV, engine, ...)
LnktargetNo	<i>VknZielNr</i>	037	9	N	Number of the linkage target (KTypNo, NTypNo, EngNo, ManIDNo, ...)
SeqNo	<i>LfdNr</i>	046	9	N	Sequential number within the ArtNo-GenArtNo-LnkTargetNo-linkage
SortNo	<i>SortNr</i>	055	2	N	Display sequence
CountryCode	<i>LKZ</i>	057	3	(C)	Country Code (-> 010)
InfType	<i>InfArt</i>	060	3	N	Information Type (KT 072)
FirstPage	<i>AnzSofort</i>	063	1	N	Immediate Display = 1: Information is shown on the 1 st article page of the presentation system and repeated in bold on the 2 nd article page.
TxtModNo	<i>TBSNr</i>	064	6	C	Text module
Exclude	<i>Exclude</i>	070	1	(N)	'1' = Country Code is an exclusion, '0' = Country Code is an inclusion.
DeleteFlag	<i>Lösch-Flag</i>	071	1	N	<i>Const=0</i>



(*) Type 'U' starting Data Release 0519 – type 'C' until then

Notes: Listing of information text to article linkages that could not be specified in criteria, (-> 410). Usage of the data table (-> 410) is **always** preferred.

Only information that is relevant to the use of articles in different vehicles may be specified here. Information that is relevant only to the article, irrespective of the vehicle wherein it is used, should be specified in the data table (-> 206).

Text can be defined with different types of information. The display sequence of text with different information types in the presentation system is specified by means of the *SortNo*.

Country in-/exclusions may not be contradictory. When a text is defined for the country group 'BEN', additional text may not be included for the country 'NL'.

Primary Key change in Data Release 2223

This table is about text-modules on linkages. If more than one text module is existing they are identified and sorted by a unique SortNo field entry.

In case a text module is valid for multiple countries, the record is repeated with different country codes (usual procedure in TecDoc tables).

Content of the table might look like this:

Linkage(*)	TextModule	SortNo	Country
Lnk1	Txt_1	1	
Lnk1	Txt_2	2	CountryCode_1
Lnk1	Txt_2	2	CountryCode_2
Lnk1	Txt_2	2	CountryCode_3
Lnk2	Txt_3	1	
Lnk3	Txt_4	1	CountryCode_1
Lnk3	Txt_4	1	CountryCode_4

(*) This is a composite key. Components are not given here for reasons of clarity.



403 Country restriction of the linkage

Source: Data supplier

Contents: Country restriction of the linkage
 Length: 60
 Sorting: LnkTargetType, LnkTargetNo, GenArtNo, ArtNo, SeqNo, CountryCode
 Primary Key: LnkTargetType, LnkTargetNo, GenArtNo, ArtNo, SeqNo, CountryCode

Name	Old name	Pos	Length	Type	Description
ArtNo	<i>ArtNr</i>	000	22	U	Article number in the data supplier format
BrandNo	<i>DLNr</i>	022	4	N	Data supplier number (Key 040)
TableNo	<i>SA</i>	026	3	N	constant "403"
GenArtNo	<i>GenArtNr</i>	029	5	N	Unambiguous number of the generic article (->320)
LnkTargetType	<i>VknZielArt</i>	034	3	N	Type of the linkage target (PC, CV, engine, ...)
LnkTargetNo	<i>VknZielNr</i>	037	9	N	Number of the linkage target (KTypNo, NTypNo, EngNo, ManIDNo, ...)
SeqNo	<i>LfdNr</i>	046	9	N	Sequential number within the ArtNo-GenArtNo-LnkTargetNo-linkage
CountryCode	<i>LKZ</i>	055	3	C	Country code (-> 010)
Exclude	<i>Exclude</i>	058	1	(N)	"1" = country code is an exclusion, "0" = country code is an inclusion.
DeleteFlag	<i>Lösch-Flag</i>	059	1	N	<i>Const = 0</i>

(*) Type 'U' starting Data Release 0519 – type 'C' until then



404 Sorting of the linkage

Source: Data supplier

Contents: Sorting of the article linkages
 Length: 56
 Sorting: LnkTargetType, LnkTargetNo, GenArtNo, ArtNo, SortNo
 Primary Key: LnkTargetType, LnkTargetNo, GenArtNo, ArtNo

Name	Old name	Pos	Length	Type	Description
ArtNo	<i>ArtNr</i>	000	22	U	Article number in the data supplier format
BrandNo	<i>DLNr</i>	022	4	N	Data supplier number (Key 040)
TableNo	SA	026	3	N	constant "404"
GenArtNo	<i>GenArtNr</i>	029	5	N	Unambiguous number of the generic article (->320)
LnkTargetType	<i>VknZielArt</i>	034	3	N	Type of the linkage target (PC, CV, engine, ...)
LnkTargetNo	<i>VknZielNr</i>	037	9	N	Number of the linkage target (KTypNo, NTypNo, EngNo, ManIDNo, ...)
SortNo	<i>SortNr</i>	046	9	N	Display sequence
DeleteFlag	<i>Lösch-Flag</i>	055	1	N	const = 0

(*) Type 'U' starting Data Release 0519 – type 'C' until then

Comments: If the sorting is not specified for all articles linked to a linkage target, the articles without explicit sorting order will be shown in ascending order of their article numbers after those articles, which have an explicit sorting order.

 If the data supplier does not specify a sorting, all articles for the linkage target are sorted by their article number (and then after their *SeqNo* in the data table 400).

 If an article with the same generic article is linked several times to the same linkage target, the display of these linkages will be set by the *SeqNo* in the data table 400.

 The data checks by TecDoc will not check the completeness of the sorting.



410 Linkage attributes

Source: Data supplier

Contents: Attributes (criteria) for the linkage
 Length: 88
 Sorting: LnkTargetType, LnkTargetNo, GenArtNo, ArtNo, SeqNo, SortNo
 Primary Key: LnkTargetType, LnkTargetNo, GenArtNo, ArtNo, SeqNo, SortNo

Name	Old name	Pos	Length	Type	Description
ArtNo	<i>ArtNr</i>	000	22	U	Article number in the data supplier format
BrandNo	<i>DLNr</i>	022	4	N	Data supplier number (Key 040)
TableNo	<i>SA</i>	026	3	N	constant "410"
GenArtNo	<i>GenArtNr</i>	029	5	N	Unambiguous number of the generic article (->320)
LnkTargetType	<i>VknZielArt</i>	034	3	N	Type of the linkage target (PC, CV, engine, ...)
LnkTargetNo	<i>VknZielNr</i>	037	9	N	Number of the linkage target (KTypNo, NTypNo, EngNo, ManIDNo, ...)
SeqNo	<i>LfdNr</i>	046	9	N	Sequential number within the ArtNo-GenArtNo-LnkTargetNo-linkage
SortNo	<i>SortNr</i>	055	3	N	Display sequence
CritNo	<i>KritNr</i>	058	4	N	Criterion number (-> 050)
CritVal	<i>KritWert</i>	062	20	C	Criterion value
FirstPage	<i>AnzSofort</i>	082	1	N	Immediate display = '1', otherwise '0'
CountryCode	<i>LKZ</i>	083	3	(C)	Country code (-> 010)
Exclude	<i>Exclude</i>	086	1	(N)	"1" = country code is an exclusion, "0" = country code is an inclusion.
DeleteFlag	<i>Lösch-Flag</i>	087	1	N	const = 0

(*) Type 'U' starting Data Release 0519 – type 'C' until then

432 Linkage-dependent Graphics/Documents

Source: Data Supplier

Contents: The allocation of graphics to vehicle linkages
 Max. Length: 73
 Sorting: LnkTargetType, LnkTargetNo, GenArtNo, ArtNo, SeqNo, SortNo, **CountryCode**
 Key: LnkTargetType, LnkTargetNo, GenArtNo, ArtNo, SeqNo, SortNo, **CountryCode**

Name	Old name	Pos	Length	Type	Description
ArtNo	<i>ArtNr</i>	000	22	U	Article Number in the data supplier format
BrandNo	<i>DLNr</i>	022	4	N	Data Supplier Number Constant (Key 040)
TableNo	<i>SA</i>	026	3	N	Data Table Constant "432"
GenArtNo	<i>GenArtNr</i>	029	5	N	Unambiguous number of the Generic Article (->320)
LnkTargetType	<i>VknZielArt</i>	034	3	N	Type of the linkage target (PC, CV, engine, ...)
LnkTargetNo	<i>VknZielNr</i>	037	9	N	Number of the linkage target (KTypNo, NTypNo, EngNo, ManIDNo, ...)
SeqNo	<i>LfdNr</i>	046	9	N	Sequential number within the ArtNo-GenArtNo-LnkTargetNo-linkage
CountryCode	<i>LKZ</i>	055	3	(C)	Country Code (Key 010)
SortNo	<i>SortNr</i>	058	2	N	Sorting Order
DocNo	<i>BildNr</i>	060	9	N	Unambiguous DocNo (-> 231)
DocType	<i>DokumentenArt</i>	069	2	N	-> DT 014.
Exclude	<i>Exclude</i>	071	1	(N)	'1' = Country Code is an exclusion, '0' = Country Code is an inclusion.
DeleteFlag	<i>Lösch-Flag</i>	072	1	N	const = 0

(* Type 'U' starting Data Release 0519 – type 'C' until then



Primary Key change in Data Release 2223

This table is about asset files allocated to linkages. If more than one asset is existing they are identified and sorted by a unique SortNo field entry.

In case an asset file is valid for multiple countries, the record is repeated with different country codes (usual procedure in TecDoc tables).

Content of the table might look like this:

Linkage (*)	AssetFile	SortNo	Country
Lnk1	file_1	1	
Lnk1	file_2	2	CountryCode_1
Lnk1	file_2	2	CountryCode_2
Lnk1	file_2	2	CountryCode_3
Lnk2	file_3	1	
Lnk3	file_4	1	CountryCode_1
Lnk3	file_4	1	CountryCode_4

(*) Linkage key is a composite key. Components are not give here for reasons of clarity.



5 ANNEX 1: Logistic Criteria for end user units (table 053 and 213)

This chapter gives a brief information about each single criteria that can be used to add logistical information for end user units (articles).

This is part of the TecDoc Format 2.5 extension and forms the first step to extend catalogue information with data required for logistic purposes.

Amount of Articles

Crit-No	Term	Type	Length	Key Table
3868	Number of parts in end user unit	Numerisch	4	n/a

Constraint / Regular Expression

Constraint – textual description

[1-9]\d{0,3}	Positive integer less than 10.000
--------------	-----------------------------------

Definition / Description

This criterion includes the number of individual, identical components within the smallest consumer unit.
 The corresponding positive integer must be entered in the criterion

Examples of use

e.g. for wiper blades/front screen usually two parts per consumer unit
 e.g. air filter usually one part for a typical application



Other information / cross references

n/a

Source / Weblinks

n/a



Combined Nomenclature

Crit-No	Term	Type	Length	Key Table
3869	Combined Nomenclature (TARIC ID)	Numeric	8 ... 11	n/a

Constraint / Regular Expression

Constraint – textual description

\d{8,11}	8, 10 or 11 digits
----------	--------------------

Definition / Description

The Combined Nomenclature (CN) is an eight-digit goods nomenclature for foreign trade within the framework of the common Commercial Policy, which is uniform throughout the EU. On the one hand, it serves to record trade within and outside the EU. It also plays an important role in the approval of simplified customs procedures in the EU. For further details, especially the numbers for the individual product groups, please refer to the links below. Please also note that the nomenclature is subject to annual adjustments. Adjustments in you data may therefore become necessary.

As indicated in the example of use, at least the eight-digit (CN) number must be entered in the criterion. The extension to 10 or 11 digits is an option. In this case, position 9 and 10 indicates the TARIC code while position 11 is a national information.

The Combined Nomenclature (CN) is structured as follows and contains the UN-HS-Code in its first 6 digits: (refer as well to Logistic Criterion *HS-Code*)

1-2	Chapter in Harmonised System (HS)
3-4	HS heading
5-6	HS subheading
7-8	CN subheading
9-11	...

Examples of use

Motor oils, compressor lube oils, turbine lube oils: CN number 27101981

Other information / cross references

Regular article criterion (Table 050) 2676: Customs tariff number.

Source / Weblinks

https://ec.europa.eu/eurostat/ramon/nomenclatures/index.cfm?TargetUrl=LST_CLS_DLD&StrNom=CN_2019&StrLanguageCode=EN&StrLayoutCode=HIERARCHIC
<https://eur-lex.europa.eu/legal-content/EN/TXT/PDF/?uri=OJ:L:2022:282:FULL&from=EN>
https://taxation-customs.ec.europa.eu/customs-4/calculation-customs-duties/customs-tariff/combined-nomenclature_en



HS-Code

From Reference Data version 0523 – 17.4.2023

Crit-No	Term	Type	Length	Key Table
4193	HS Code	Numeric	6	n/a

Constraint / Regular Expression

Constraint – textual description

[\\d]{6}	Exactly 6 digits, no decimal places
----------	-------------------------------------

Definition / Description

The Harmonized Commodity Description and Coding System, also known as the Harmonized System (HS) of tariff nomenclature is an internationally standardized system of names and numbers to classify traded products. It came into effect in 1988 and has since been developed and maintained by the World Customs Organization (WCO) (formerly the Customs Co-operation Council), an independent intergovernmental organization based in Brussels, Belgium, with over 200 member countries.

The HS-Code is a 6-digit numerical classification system.

- 1-2 Chapter in Harmonised System (HS)
- 3-4 HS heading
- 5-6 HS subheading

Examples of use

842123	Oil or petrol-filters for internal combustion engines
--------	-------------------------------------------------------

Other information / cross references

n/a

Source / Weblinks

https://www.wcotradetools.org/en/harmonized-system

Packaging Type

Crit-No	Term	Type	Length	Key Table
3864	Packaging Type	Key	3	739

Constraint / Regular Expression

Constraint – textual description

\[dw{1,3}	Alphanumeric Key, length 1-3
-----------	------------------------------

Definition / Description

This criterion is used to describe the type of packaging of the final consumer unit. This is usually an individual packaging that directly encloses the packaged goods, such as plastic containers or canisters for liquids. In the case of multiple packaging of the consumer unit, the outermost and visible packaging is indicated here, e.g. in the case of a product wrapped in paper and packed in a carton, the carton would have to be specified. The criterion contains the corresponding alphanumeric code from the key table.

Examples of use

Motor oil can be packaged in the form of a plastic container/canister or as a barrel as the smallest form of individual packaging. If, on the other hand, it is a collective packaging such as windshield wiper replacement (2 pieces), it can be packaged e.g. in cartons.

In the examples 'CT' for the cardboard box and 'JC' for the plastic canister is the right choice.



Other information / cross references

The codes used are in accordance with UN Standard UN-ECE-REC21-Rev8 and are supplemented by some codes from the consumer goods extension, which are marked "GS1-Code". The key table in TecDoc contains only some of the codes of this standard. The inclusion of further codes is possible

Source / Weblinks

https://www.unece.org/fileadmin/DAM/cefact/recommendations/rec21/rec21rev1_ecetrd195e.pdf

Weight of article incl. packaging

Crit-No	Term	Type	Length	Key Table
3870	Gross Weight [g]	Numeric	7	n/a

Constraint / Regular Expression

Constraint – textual description

<code>[\\d]{1,7}</code>	Up to 7 digits, no decimal places
-------------------------	-----------------------------------

Definition / Description

Gross weight of the smallest consumer unit in grams.
It includes the net weight of the spare part (pr parts) and its associated weight of packaging according to criterion 3864 (Packaging Type)

Examples of use

n/a

Other information / cross references

n/a

Source / Weblinks

n/a



Measurement of end user units: basic information

Measuring dimensions of end user units (incl. packaging) should follow these basic rules:

The surface with markings such as the product name and standard text elements such as Consumer Declaration. This is the surface that is presented to the customer e.g. in a shelf in the store. After you identified the front, the measurements are given as follows:

Height: from the base to the top → Logistic Criterion 4197

Width: from the left to the right → Logistic Criterion 4198

Depth: from the front to the back → Logistic Criterion 4199

**We ask all of you to follow these rules to have a common understanding for all data inside the TecDoc system
Otherwise the information inside the fields is not useful for the receiver**

Measurement of end user unit: Height

From Reference Data version 0523 – 17.4.2023

Crit-No	Term	Type	Length	Key Table
4197	Height [mm]	Numeric	7	n/a

Constraint / Regular Expression

Constraint – textual description

[\\d]{1,7}	Up to 7 digits, no decimal places
------------	-----------------------------------

Definition / Description

This is for providing measurements of the end user unit as it is delivered to the end user. The content of the Logistics criterion "Packaging Type" should be considered to know about the kind of object the measurements are for.

If the Packaging Type is missing, the measurements are regarded to describe the end user unit without packaging.

Rules for measurement:

The surface with markings such as the product name and standard text elements such as Consumer Declaration. This is the surface that is presented to the customer e.g. in a shelf in the store. After you identified the front, the measurements are given as follows:

Height: from the base to the top

Width: from the left to the right

Depth: from the front to the back

Examples of use

Please refer to chapter "Measurement of end user units: basic information"

Other information / cross references

This is about end user unit incl. packaging.

Source / Weblinks

n/a



Measurement of end user unit: Width

From Reference Data version 0523 – 17.4.2023

Crit-No	Term	Type	Length	Key Table
4198	Width [mm]	Numeric	7	n/a

Constraint / Regular Expression	Constraint – textual description
[\\d]{1,7}	Up to 7 digits, no decimal places

Definition / Description
<p>This is for providing measurements of the end user unit as it is delivered to the end user. The content of the Logistics criterion "Packaging Type" should be considered to know about the kind of object the measurements are for.</p> <p>If the Packaging Type is missing, the measurements are regarded to describe the end user unit without packaging.</p> <p>Rules for measurement:</p> <p>The surface with markings such as the product name and standard text elements such as Consumer Declaration. This is the surface that is presented to the customer e.g. in a shelf in the store. After you identified the front, the measurements are given as follows:</p> <p>Height: from the base to the top Width: from the left to the right Depth: from the front to the back</p>

Examples of use

Please refer to chapter "Measurement of end user units: basic information"

Other information / cross references

This is about end user unit incl. packaging.

Source / Weblinks

n/a

Measurement of end user unit: Depth

From Reference Data version 0523 – 17.4.2023

Crit-No	Term	Type	Length	Key Table
4199	Depth [mm]	Numeric	7	n/a

Constraint / Regular Expression

Constraint – textual description

<code>[\\d]{1,7}</code>	Up to 7 digits, no decimal places
-------------------------	-----------------------------------

Definition / Description

This is for providing measurements of the end user unit as it is delivered to the end user. The content of the Logistics criterion "Packaging Type" should be considered to know about the kind of object the measurements are for.

If the Packaging Type is missing, the measurements are regarded to describe the end user unit without packaging.

Rules for measurement:

The surface with markings such as the product name and standard text elements such as Consumer Declaration. This is the surface that is presented to the customer e.g. in a shelf in the store. After you identified the front, the measurements are given as follows:

Height: from the base to the top

Width: from the left to the right

Depth: from the front to the back

Examples of use

Please refer to chapter "Measurement of end user units: basic information"

Other information / cross references

This is about end user unit incl. packaging.

Source / Weblinks

n/a



Country Of Origin (coming soon!)

Crit-No	Term	Type	Length	Key Table
tbd	Country of origin	Alphanumeric	2	tbd

Constraint / Regular Expression

Constraint – textual description

<code>[\w]{2}</code>	ISO 3166-1 Alpha-2 codes
----------------------	--------------------------

Definition / Description

Represents the country or countries of manufacture, production, design, or brand origin where an article or product comes from. For multinational brands, may include multiple countries within the value-creation process.

It may as well be considered that different countries of origin apply for specific target markets.

Examples of use

n/a

Other information / cross references

n/a

Source / Weblinks

n/a



ANNEX 2: TecDoc® data guide (tables 900 and 990)

The TecDoc® data guide is set up in order to provide information for the correct and consistent use of TecDoc Reference Data for the description of products and linkages [and also provides guidance on the correct implementation of DQM measures in IAM catalogue systems.](#)

It helps the Data Supplier and every Data User to understand Generic Articles and their differentiation from other Generic Articles as well as the usage of specific criteria together with Generic [Articles and also provides support for the optimal implementation of functions in IAM catalogue systems, such as the design of selection filters based on the mandatory and differentiation attributes.](#)

Definition and usage of criteria is another option that is part of this TecDoc® data guide.

In the first version, the following content can be expected:

- 1) Definition and usage of Generic Articles
- 2) Definition and usage of Criteria
- 3) More detailed information on limitations of Criteria usage on Generic Articles
- 4) More detailed information on limitations of Key Values usage on specific Criteria
- 5) More detailed information on limitations of Key Value/Criteria usage on specific Generic Articles
- 6) [Guide for manufacturers of catalogue systems on the DQM-compliant design of filter functions in IAM catalogues in order to achieve optimal filter behavior.](#)

This list might be extended by further content of the DQM Data Guide in the future.

The language provided will be English in the first version. Further languages might follow in the future.

The two tables are only provided as CSV files according to structure as defined in chapter "TAF vs CSV" at the beginning of this documentation. The table structure therefore contains no "Pos" column.

900 TecDoc® data guide

Source: TecDoc

Contents: Rules and guidelines for the correct use of specific TecDoc reference data content
 Sorting: Usage, UniqueNumber 1, (UniqueNumber 2), (UniqueNumber 3)
 Primary Key: Usage, UniqueNumber 1, (UniqueNumber 2), (UniqueNumber 3)

Name	MaxLength	Type	Description
BrandNo	4	N	Data Supplier Number Constant = 9999
TableNo	3	N	Data Table Constant= 900
DQMUsage	2	C	GA ('01'), Attribute ('02'), Combination of GA & Attribute ('03'), Combination of Attribute & KeyTableValue ('04'), Combination of GA & Attribute & KeyTableValue ('05'), Combination of KeyTable and KeyTableValue ('06') Catalogue functionality ('07')
UniqueNumber 1	9	N	Unique number of GA or Attribute if usage is = '01' or '02', Unique number of GA if Usage is = '03' or '05', Unique number of Attribute if Usage is = '04' Filter behaviour (const. 1, if usage = '07')
UniqueNumber 2	9	(C)	Unique number of Attribute if Usage is = '03' Unique number of KeyTableValue if Usage is = '04' Unique number of Attribute if Usage is = '05' Sequential number if Usage = '07'
UniqueNumber 3	9	(C)	Unique number of KeyTableValue if Usage is = '05'
DQMTermNo	9	N	Description Number (-> 990) for description of rules and guidelines



Usage	UniqueNumber 1	UniqueNumber 2	UniqueNumber 3
1	GenArtNo		
2	CritNo		
3	GenArtNo	CritNo	
4	CritNo	Key	
5	GenArtNo	CritNo	Key
6	KeyTable	Key	
7	Const. 1		

990 TecDoc® data guide – Terms and Documents

Source: TecDoc

Contents: Content for TecDoc® data guide – as plain text or as reference to a document
Sorting: DQMTermNo, LangNo(, SeqNo)
Primary Key: DQMTermNo, LangNo(, SeqNo)

Name	MaxLength	Type	Description
BrandNo	4	N	Data Supplier Number Constant = 9999
TableNo	3	N	Data Table Constant= 990
DQMTermNo	9	N	Description Number (-> 900) for description of rules and guidelines
LangNo	3	N	-> 020 (**)
URL	100	(C)	Link to more information of TecDoc® data guide content (*)
Text	600	(U)	Text containing TecDoc® data guide content (*)
SeqNo	2	(N)	For future uses (in case more than one entry is required)

(*)

The table allows just one entry for each Data-Guide entry. This entry contains a plain text of maximum 600 characters and/or a URL to a document attached.

The document type is not fixed and can be text based, an image or a video format.

The URL needs to be unique!

(**)

Plain text and documents should always contain just one single language. Language Code 255 is therefore not permitted in this table.

About SeqNo field:

This is not used for the time being but might be as soon as more than one URL needs to become part of a TecDoc® data guide position.

If – in the future – more than one entry might exist, only the first one (smallest SeqNo) is allowed to contain content in field "Text".